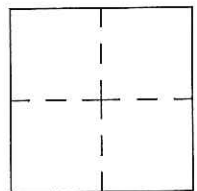


CORNER RECORD

Agency Index CR-17-197
 Document Number _____

City of _____ County of San Joaquin, California

Brief Legal Description BYRON ROAD @ VON SOSTEN ROAD
(Within Section 13, Township 2 South, Range 4 East, Mount Diablo Base & Meridian)



CORNER TYPE

Government Corner Control
 Meander Property
 Rancho Other

Date of Survey July 19, 2017

COORDINATES (Optional)

N. _____ E. _____
 Elevation. _____
 Units Metric U.S. Survey Foot
 Horizontal Datum _____
 Zone _____ Epoch Date _____
 Vertical Datum _____
 Complies with Public Resources Code §§8801-8819
 Complies with Public Resources Code §§8890-8902

PLS Act Ref.: 8765(d) 8771 8773 Other: _____

Corner/Monument: Left as found Established Rebuilt Pre-Construction
 Found and tagged Reestablished Referenced Post-Construction

Narrative of corner identified and monument as found, set, reset, replaced, or removed:
 See sheet #2 for description(s):

SURVEYOR'S STATEMENT

This Corner Record was prepared by me or under my direction in conformance with the Professional Land Surveyor's Act on July 21, 2017

Signed James E. Hart P.L.S. or R.C.E. No. 8657



COUNTY SURVEYOR'S STATEMENT

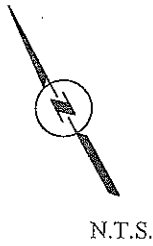
This Corner Record was received July 24, 2017
 and examined and filed August 8, 2017

Signed Warren D. Smith P.L.S. or R.C.E. No. 4842

Title County Surveyor



County Surveyor's Comment _____

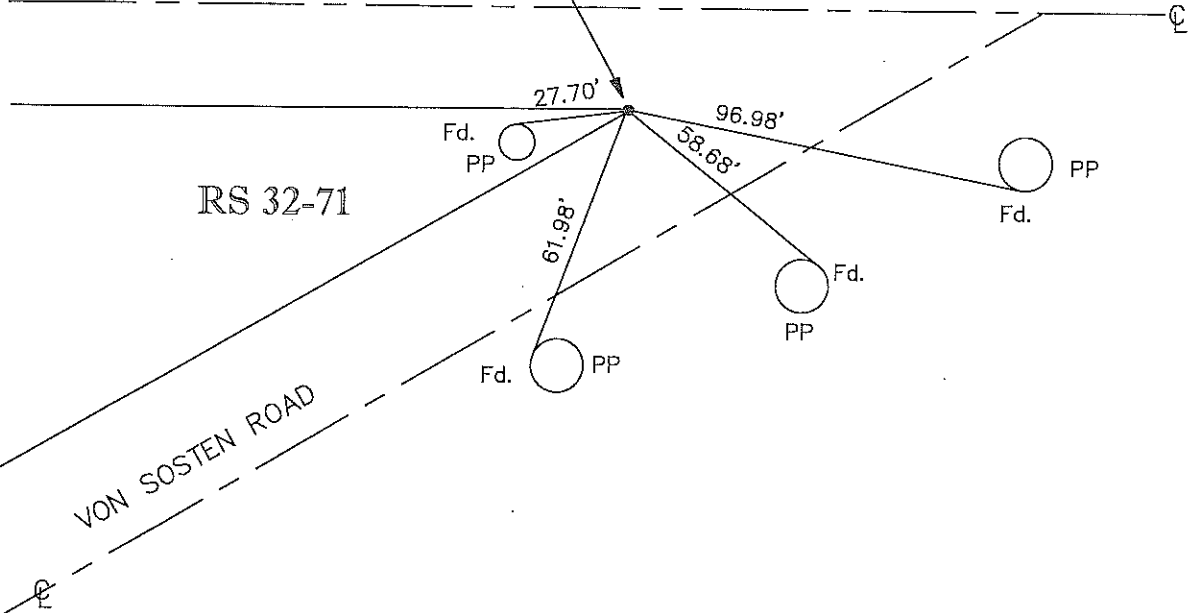


3/4" Iron Pipe per CR 08-201
not found. Set MAG nail on surface.

BYRON ROAD

RS 32-71

VON SOSTEN ROAD



- CR=Corner Record
- FP=Fence Post
- JP=Joint Pole
- LP=Light Pole
- PP=Power Pole
- GP=Guy Pole
- SP=Service Pole
- TP=Telephone Pole
- S.F.N.=Searched Found Nothing
- N.T.S.=Not To Scale
- M&P=Maps & Plats
- PM=Parcel Map
- RS=Record of Survey
- FB=Field Book
- N=North
- DI=Drain Inlet
- TOC=Top of Curb

Set=Conc. Nail with Brass Washer Stamped
"S.J. Co.", unless otherwise noted
Fd.=Found Conc. Nail with Brass Washer Stamped
"S.J. Co.", unless otherwise noted

Note: Found Monuments are not tagged
unless otherwise noted.

"No Attempt Was Made to Verify the Monument(s)"