

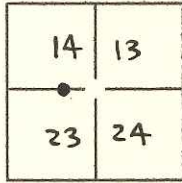
CORNER RECORD

Document Number CR-17-191

City of Lodi

County of San Joaquin, California

Brief Legal Description Center of the intersection of Harney Lane and Winchester Dr.



T 3N, R 6E, M 0M

CORNER TYPE

Government Corner Control
 Meander Property
 Rancho Other

Date of Survey April 4, 2016

COORDINATES(Optional)

N. _____
 E. _____
 Zone _____ NAD27 NAD83
 NAD83 Epoch _____
 Elev. _____
 Vert. Datum: NGVD29 NADV88
 Meas. Units: Metric Imperial

Corner - Left as found Found and tagged Established Reestablished Rebuilt

Identification and type of corner found: Evidence used to identify or procedure used to establish or reestablish the corner:

The purpose of this corner record is to establish the position of a found monument in relation to set reference points so that we can reestablish the monument at the conclusion of the Harney Lane grade separation project.
No attempt was made to determine the validity of said monument or it's proper location in relation to legal boundary lines in the area.

A description of the physical condition of the monument as found and as set or reset: Found monument was a 3/4" rebar no tag in a monument well with no lid.

SURVEYOR'S STATEMENT

This Corner Record was prepared by me or under my direction in conformance with the Land Surveyor's Act on JUNE 6, 2017.

Signed Michael L. Foulk P.L.S. or R.C.E. No.: 7803



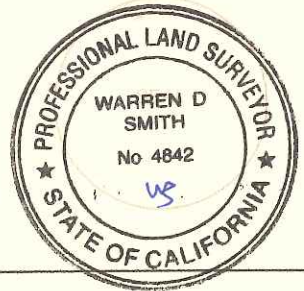
COUNTY SURVEYOR'S STATEMENT

This Corner Record was received June 21, 2017 and examined and filed July 13, 2017

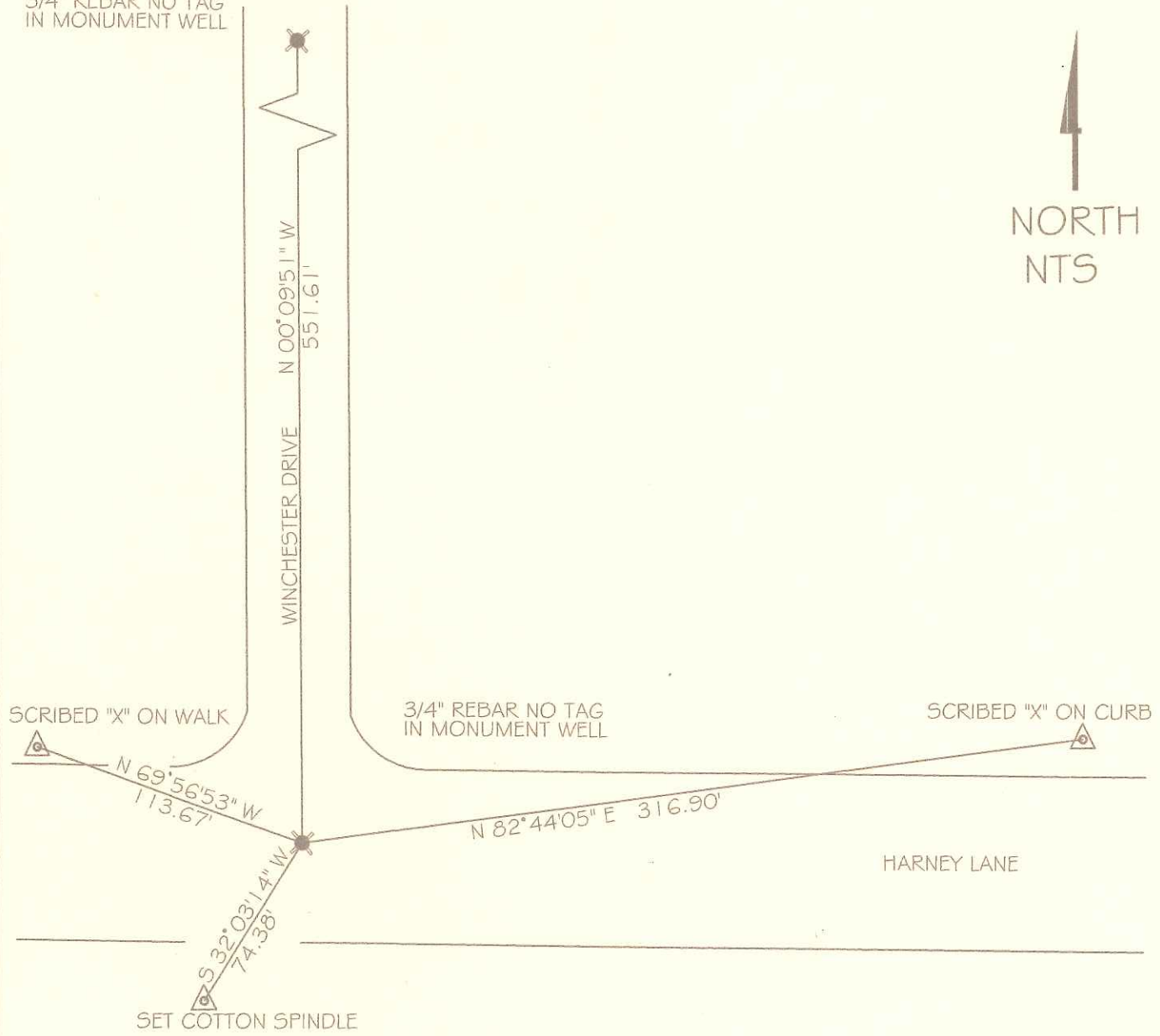
Signed Warren D. Smith P.L.S. or R.C.E. No.: 4842

Title County Surveyor

County Surveyor's Comment _____



3/4" REBAR NO TAG
IN MONUMENT WELL



LEGEND

-  FOUND MONUMENT AS NOTED
-  SET REFERENCE POINTS AS SHOWN