

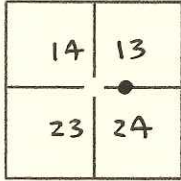
# CORNER RECORD

Document Number CR-17-190

City of Lodi

County of San Joaquin, California

Brief Legal Description Center of the intersection of Harney Lane and Banyan Dr.



T 3N, R 6E, M 1D

### CORNER TYPE

Government Corner  Control   
 Meander  Property   
 Rancho  Other

Date of Survey April 4, 2016

### COORDINATES(Optional)

N. \_\_\_\_\_  
 E. \_\_\_\_\_  
 Zone \_\_\_\_\_ NAD27  NAD83   
 NAD83 Epoch \_\_\_\_\_  
 Elev. \_\_\_\_\_  
 Vert. Datum: NGVD29  NADV88   
 Meas. Units: Metric  Imperial

Corner - Left as found  Found and tagged  Established  Reestablished  Rebuilt

Identification and type of corner found: Evidence used to identify or procedure used to establish or reestablish the corner:

The purpose of this corner record is to establish the position of a found monument in relations to set reference points so that we can reestablish the monument at the conclusion of the Harney lane grade separation project.  
No attempt was made to determine the validity of said monument or it's proper location in relation to legal boundary lines in the area.

A description of the physical condition of the monument as found and as set or reset: Found monument was a 3/4" rebar no tag in a monument well.

### SURVEYOR'S STATEMENT

This Corner Record was prepared by me or under my direction in conformance with

the Land Surveyor's Act on JUNE 6, 2017.

Signed Michael L. Folik (P.L.S.) or R.C.E. No.: 7803



### COUNTY SURVEYOR'S STATEMENT

This Corner Record was received June 21, 2017 and examined

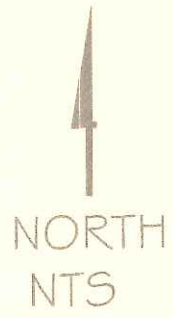
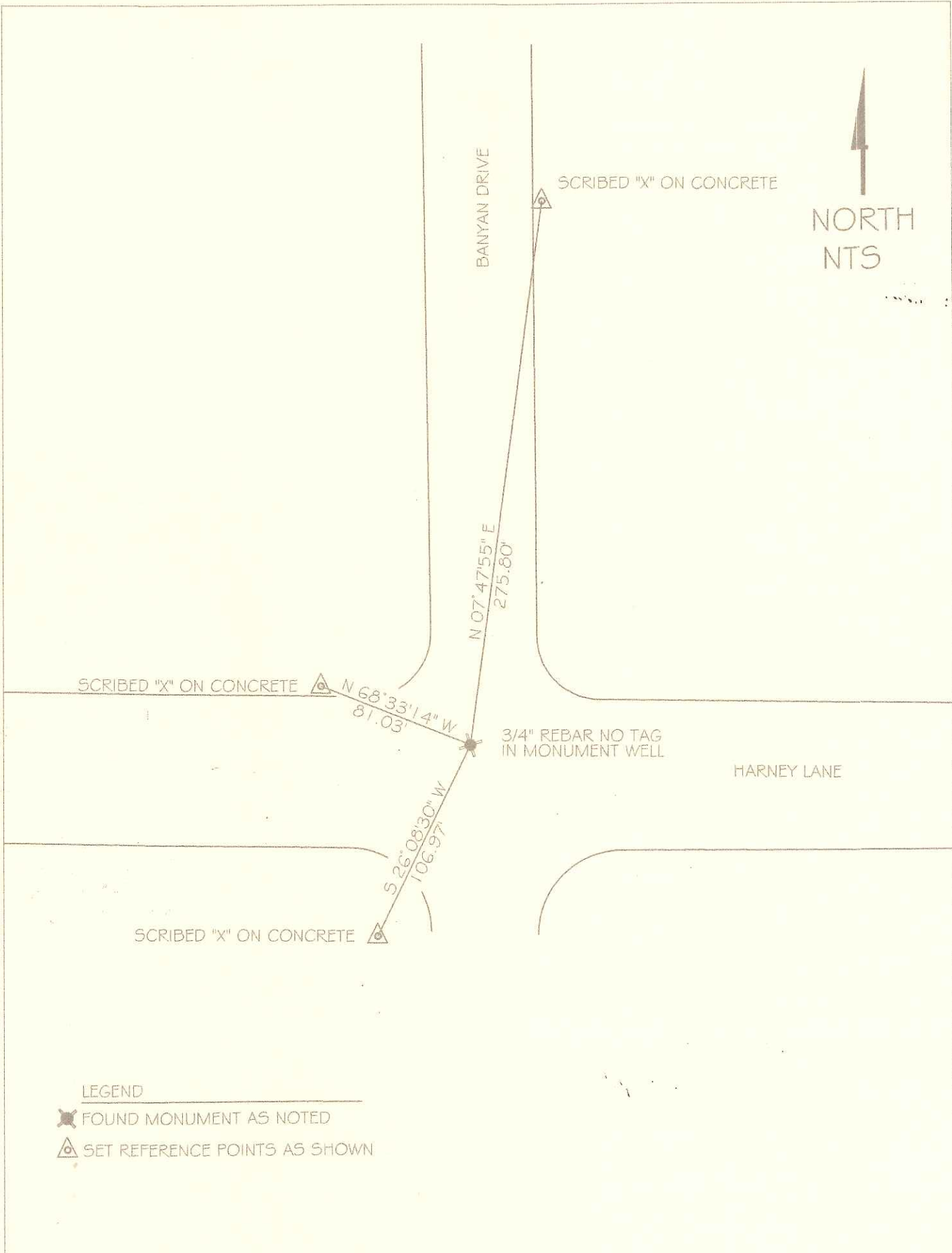
and filed July 13, 2017

Signed Warren D. Smith P.L.S. or R.C.E. No.: 4842

Title County Surveyor

County Surveyor's Comment \_\_\_\_\_





BOOK \_\_\_\_\_ OF CORNER RECORDS, PAGE \_\_\_\_\_

LEGEND

- ✱ FOUND MONUMENT AS NOTED
- △ SET REFERENCE POINTS AS SHOWN