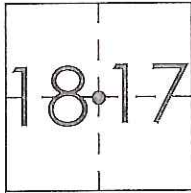


CORNER RECORD

Agency Index CR-17-176
Document Number _____

City of _____ County of San Joaquin, California
Brief Legal Description Devries Road @ Kingdon Road



T3N R6E
MDB&M

CORNER TYPE

Government Corner Control
Meander Property
Rancho Other

Date of Survey April 05, 2017

COORDINATES (Optional)

N. _____ E. _____
Elevation. _____
Units Metric U.S. Survey Foot
Horizontal Datum _____
Zone _____ Epoch Date _____
Vertical Datum _____
 Complies with Public Resources Code §§8801-8819
 Complies with Public Resources Code §§8890-8902

PLS Act Ref.: 8765(d) 8771 8773 Other:
Corner/Monument: Left as found Established Rebuilt Pre-Construction
 Found and tagged Reestablished Referenced Post-Construction

Narrative of corner identified and monument as found, set, reset, replaced, or removed:
 See sheet #2 for description(s):

SURVEYOR'S STATEMENT

This Corner Record was prepared by me or under my direction in conformance with
the Professional Land Surveyor's Act on June 12, 2017
Signed James E. Hart P.L.S. or R.C.E. No. 8657



COUNTY SURVEYOR'S STATEMENT

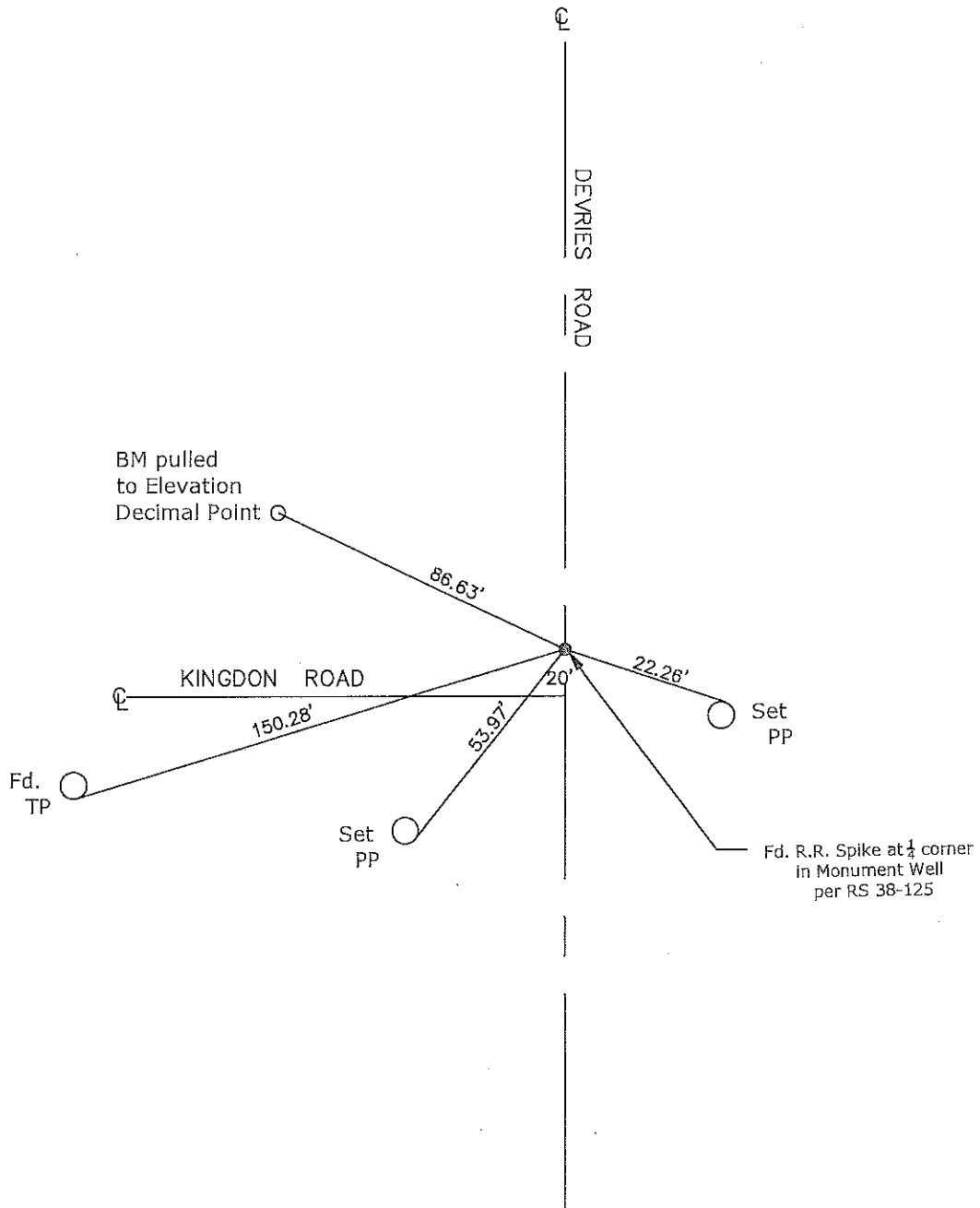
This Corner Record was received June 16, 2017
and examined and filed July 10, 2017
Signed Warren D. Smith P.L.S. or R.C.E. No. 4842
Title County Surveyor



County Surveyor's Comment



N.T.S.



CR=Corner Record
 FP=Fence Post
 JP=Joint Pole
 LP=Light Pole
 PP=Power Pole
 GP=Guy Pole
 SP=Service Pole
 TP=Telephone Pole
 S.F.N.=Searched Found Nothing
 N.T.S.=Not To Scale
 M&P=Maps & Plats
 PM=Parcel Map
 RS=Record of Survey
 FB=Field Book
 N=North
 DI=Drain Inlet
 TOC=Top of Curb

Set=Conc. Nail with Brass Washer Stamped
 "S.J. Co.", unless otherwise noted
 Fd.=Found Conc. Nail with Brass Washer Stamped
 "S.J. Co.", unless otherwise noted
 Note: Found Monuments are not tagged
 unless otherwise noted.

"No Attempt Was Made to Verify the Monument(s)"