

CORNER RECORD

Agency Index CR-17-159

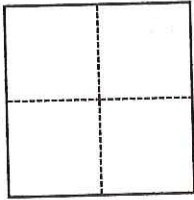
Document Number _____

City of STOCKTON County of SAN JOAQUIN, California

Brief Legal Description _____

CORNER TYPE

COORDINATES (Optional)



- Government Corner
- Meander
- Rancho
- Control
- Property
- Other

Date of Survey February 27, 2017

N. _____ E. _____

Elevation _____

Units Metric U.S. Survey Foot

Horizontal Datum _____

Zone _____ Epoch Date _____

Vertical Datum _____

Complies with Public Resources Code §§8801-8819

Complies with Public Resources Code §§8890-8902

PLS Act Ref.: 8765(d) 8771 8773 Other:

Corner/Monument: Left as found Established Rebuilt Pre-Construction

Found and tagged Reestablished Referenced Post-Construction

Narrative of corner identified and monument as found, set, reset, replaced, or removed:

See sheet #2 for description(s):

**STONEWOOD UNIT NO. 11, LOT 27, MAPS & PLATS
VOL. 23, PG. 43, SAN JOAQUIN COUNTY RECORDS
SET BRASS TAG "L.S. 6939" ON SIDEWALK.
TAG IS A 3.00 FT. WITNESS CORNER TO THE FRONT LOT CORNER.**

SURVEYOR'S STATEMENT

This Corner Record was prepared by me or under my direction in conformance with

the Professional Land Surveyors' Act on June 14th, 2017

Signed Michael D. Farley P.L.S. or R.C.E. No. L.S. 6939



COUNTY SURVEYOR'S STATEMENT

This Corner Record was received June 16, 2017

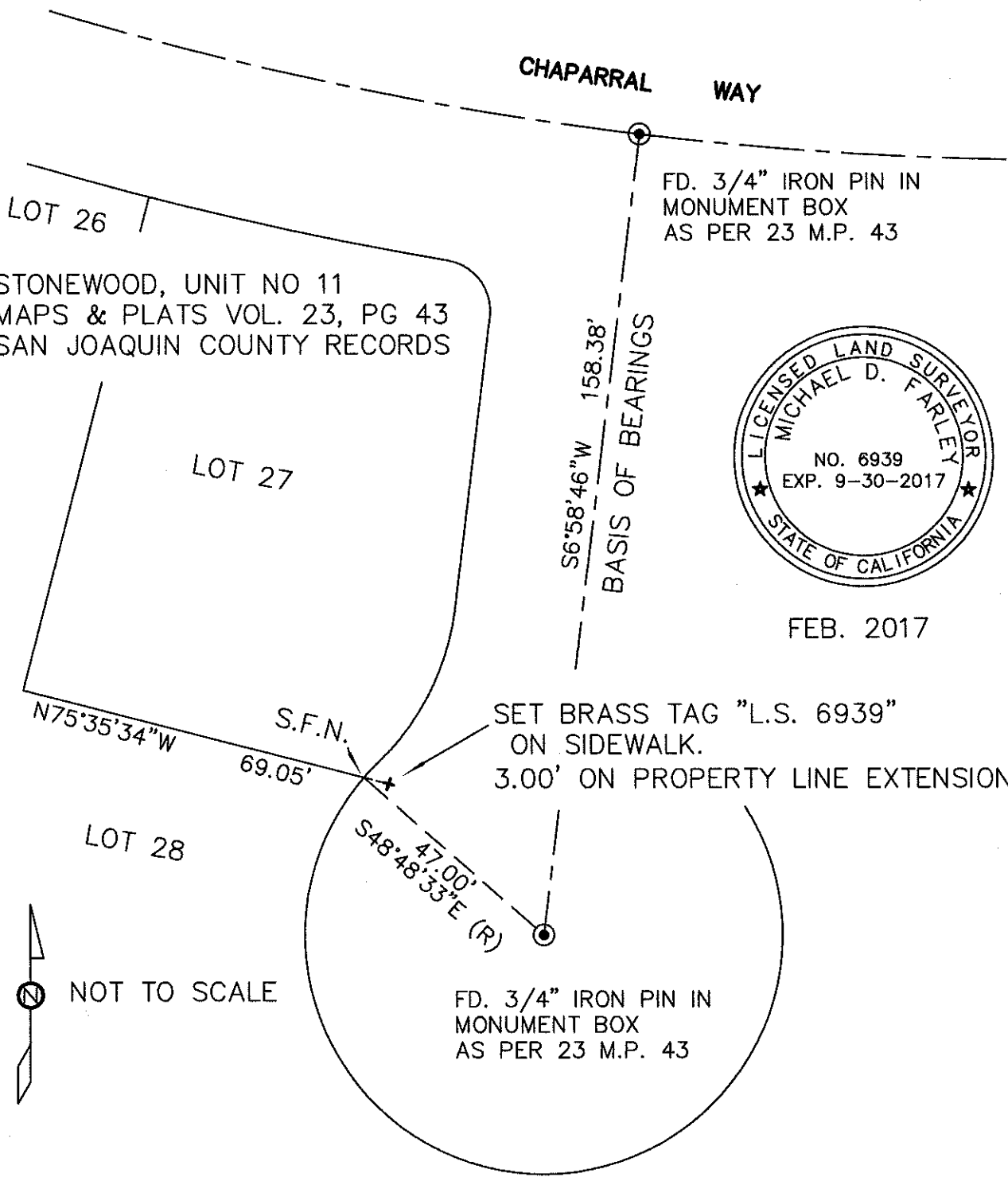
and examined and filed June 23, 2017

Signed Warren D. Smith P.L.S. or R.C.E. No. 4842

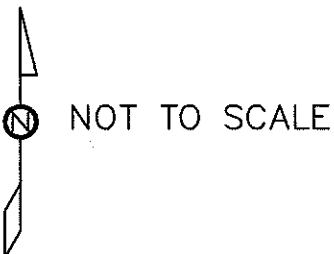
Title County Surveyor

County Surveyor's Comment _____





FEB. 2017



NO.	REV. DATE	BY	APRVD.	1340 CHAPARRAL WAY STOCKTON, CA.	APPROVED BY	
DWG. BY				MICHAEL D. FARLEY LAND SURVEYOR # 6939	DATE	DRAWING NO.
CK. BY					MAR 2017	
SCALE						