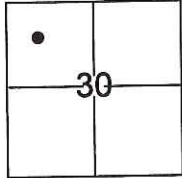


# CORNER RECORD

Document Number CR-17-143  
County of San Joaquin, California

City of \_\_\_\_\_  
Brief Legal Description \_\_\_\_\_



T.3N.,R.7E., M.D.B.&M.

### CORNER TYPE

Government Corner  Control   
Meander  Property   
Rancho  Other

Date of Survey March 20, 2017

### COORDINATES(Optional)

N. \_\_\_\_\_  
E. \_\_\_\_\_  
Zone \_\_\_\_\_ NAD27  NAD83   
NAD83 Epoch \_\_\_\_\_  
Elev. \_\_\_\_\_  
Vert. Datum: NGVD29  NADV88   
Meas. Units: Metric  Imperial

Corner - Left as found  Found and tagged  Established  Reestablished  Rebuilt

Identification and type of corner found: Evidence used to identify or procedure used to establish or reestablish the corner:

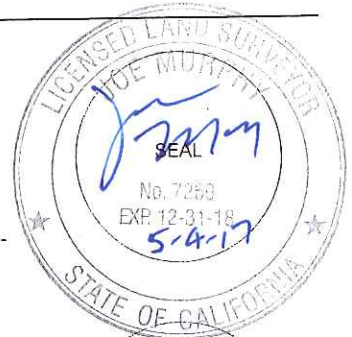
See Sketch.

A description of the physical condition of the monument as found and as set or reset: See Sketch.

### SURVEYOR'S STATEMENT

This Corner Record was prepared by me or under my direction in conformance with the Land Surveyor's Act on March 24, 2017.

Signed [Signature] P.L.S. or R.C.E. No.: 7269



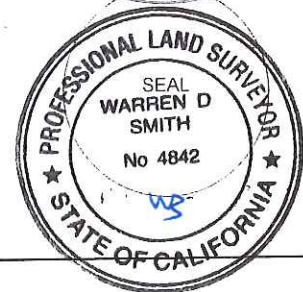
### COUNTY SURVEYOR'S STATEMENT

This Corner Record was received May 9, 2017 and examined and filed May 18, 2017.

Signed Warren D. Smith P.L.S. or R.C.E. No.: 4842

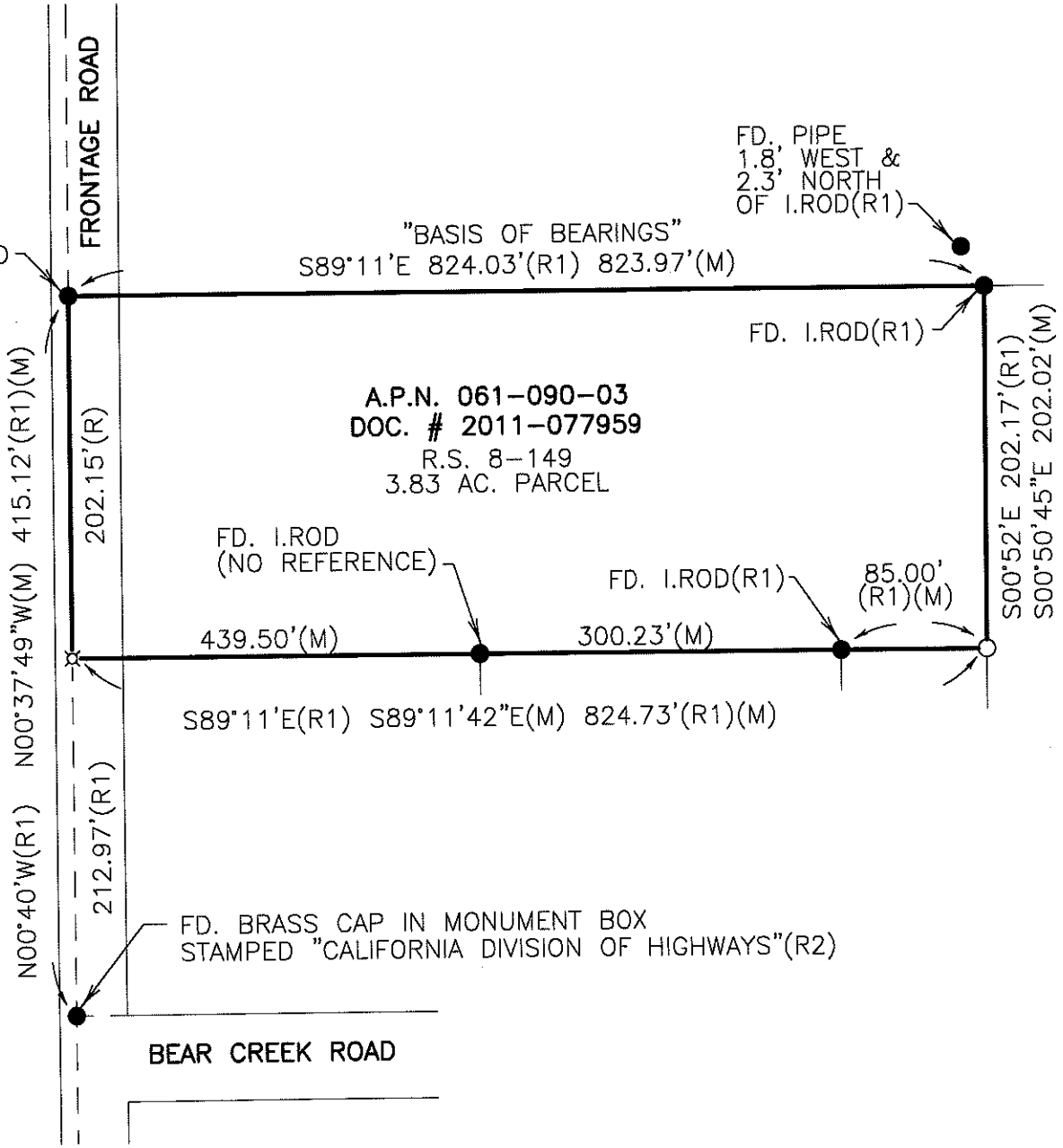
Title County Surveyor

County Surveyor's Comment \_\_\_\_\_





STATE HIGHWAY ROUTE NO. 99



**LEGEND**

- SET 3/4" IRON ROD WITH CAP STAMPED L.S. 7269, UNLESS OTHERWISE NOTED
- ⊕ SET PK TAGGED L.S. 7269
- FOUND MONUMENT AS NOTED
- FD. RECORD OF SURVEY
- R.S. DOCUMENT NUMBER
- DOC. #
- CR CORNER RECORD

**REFERENCES:**

- (R1) R.S. 8-149
- (R2) CR 02-009

**DILLON & MURPHY**  
 CONSULTING CIVIL ENGINEERS  
 ENGINEERING • PLANNING • SURVEYING  
 847 N. CLUFF AVENUE, SUITE A2, LODI, CALIFORNIA 95240 (209) 334-6613  
 1727