

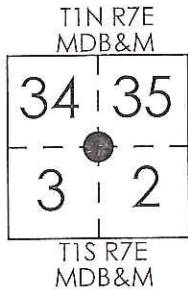
# CORNER RECORD

Agency Index CR-17-118

Document Number \_\_\_\_\_

City of \_\_\_\_\_ County of San Joaquin, California

Brief Legal Description Austin Road 6643' +/- North of Lynch Road



### CORNER TYPE

- Government Corner  Control   
 Meander  Property   
 Rancho  Other

Date of Survey February 8, 2017

### COORDINATES (Optional)

- N. \_\_\_\_\_ E. \_\_\_\_\_  
 Elevation. \_\_\_\_\_  
 Units Metric  U.S. Survey Foot   
 Horizontal Datum \_\_\_\_\_  
 Zone \_\_\_\_\_ Epoch Date \_\_\_\_\_  
 Vertical Datum \_\_\_\_\_  
 Complies with Public Resources Code §§8801-8819  
 Complies with Public Resources Code §§8890-8902

- PLS Act Ref.:  8765(d)  8771  8773  Other:  
 Corner/Monument:  Left as found  Established  Rebuilt  Pre-Construction  
 Found and tagged  Reestablished  Referenced  Post-Construction

Narrative of corner identified and monument as found, set, reset, replaced, or removed:  
 See sheet #2 for description(s):

### SURVEYOR'S STATEMENT

This Corner Record was prepared by me or under my direction in conformance with the Professional Land Surveyor's Act on April 27, 2017  
 Signed James E. Hart P.L.S. or R.C.E. No. 8657

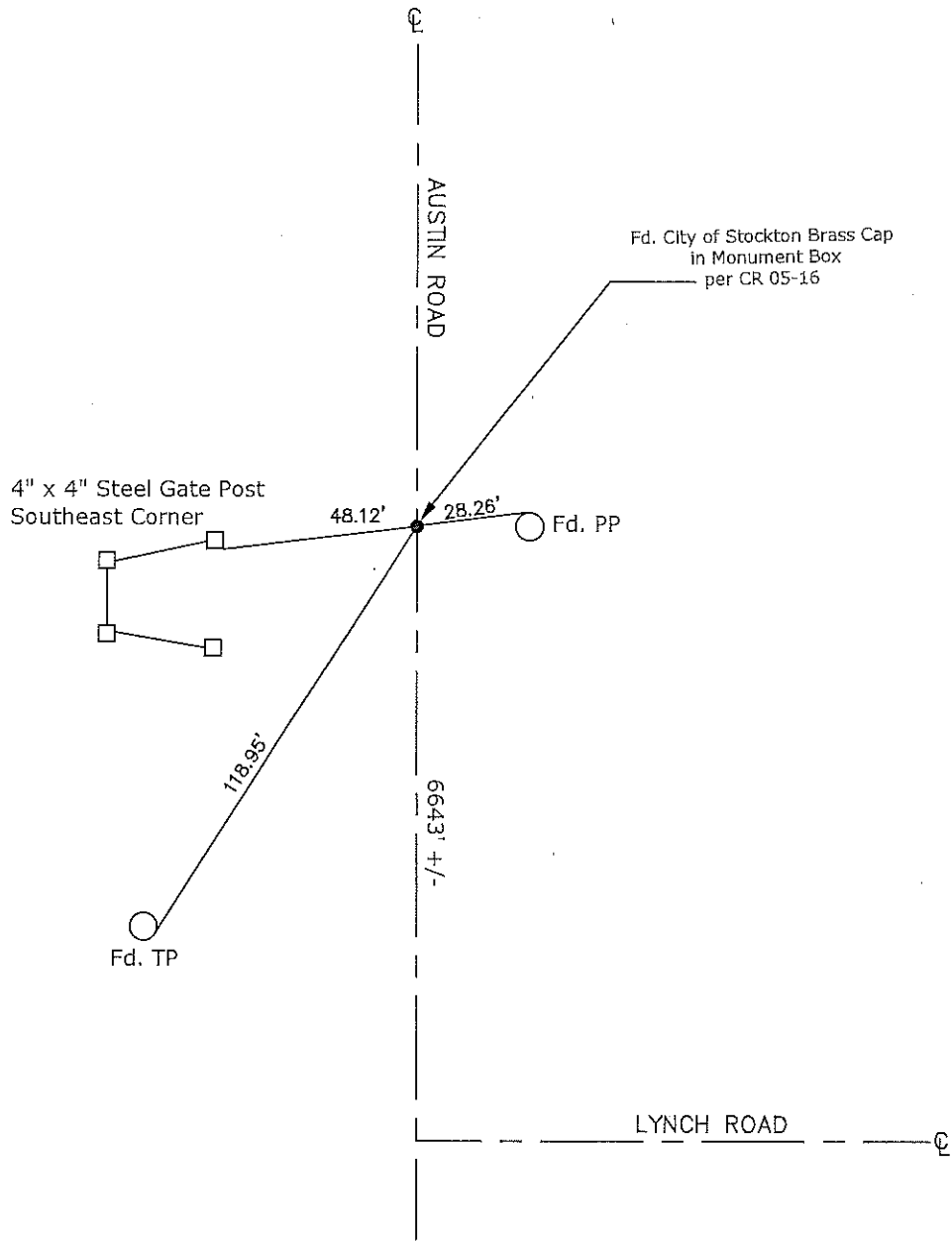


### COUNTY SURVEYOR'S STATEMENT

This Corner Record was received April 27, 2017  
 and examined and filed May 17, 2017  
 Signed Warren D. Smith P.L.S. or R.C.E. No. 4842  
 Title County Surveyor



County Surveyor's Comment



- CR=Corner Record
- FP=Fence Post
- JP=Joint Pole
- LP=Light Pole
- PP=Power Pole
- GP=Guy Pole
- SP=Service Pole
- TP=Telephone Pole
- S.F.N.=Searched Found Nothing
- N.T.S.=Not To Scale
- M&P=Maps & Plats
- PM=Parcel Map
- RS=Record of Survey
- FB=Field Book
- N=North
- DI=Drain Inlet
- TOC=Top of Curb

Set=Conc. Nail with Brass Washer Stamped "S.J. Co.", unless otherwise noted  
 Fd.=Found Conc. Nail with Brass Washer Stamped "S.J. Co.", unless otherwise noted  
 Note: Found Monuments are not tagged unless otherwise noted.

"No Attempt Was Made to Verify the Monument(s)"