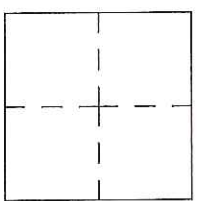


CORNER RECORD

Agency Index CR-17-110
 Document Number _____

City of _____ County of San Joaquin, California

Brief Legal Description Moore Road 2640± south of Sargent Road
Within Section 9, Township 3 North, Range 6 East, Mount Diablo Base & Meridian



CORNER TYPE

Government Corner Control Elevation. _____
 Meander Property Units Metric U.S. Survey Foot
 Rancho Other Horizontal Datum _____
 Date of Survey April 3, 2017 Zone _____ Epoch Date _____
 Vertical Datum _____
 Complies with Public Resources Code §§8801-8819
 Complies with Public Resources Code §§8890-8902

PLS Act Ref.: 8765(d) 8771 8773 Other: _____

Corner/Monument: Left as found Established Rebuilt Pre-Construction
 Found and tagged Reestablished Referenced Post-Construction

Narrative of corner identified and monument as found, set, reset, replaced, or removed:
 See sheet #2 for description(s):

SURVEYOR'S STATEMENT

This Corner Record was prepared by me or under my direction in conformance with
 the Professional Land Surveyor's Act on April 17, 2017
 Signed James E. Hart P.L.S. or R.C.E. No. 8657

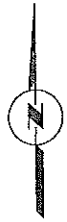


COUNTY SURVEYOR'S STATEMENT

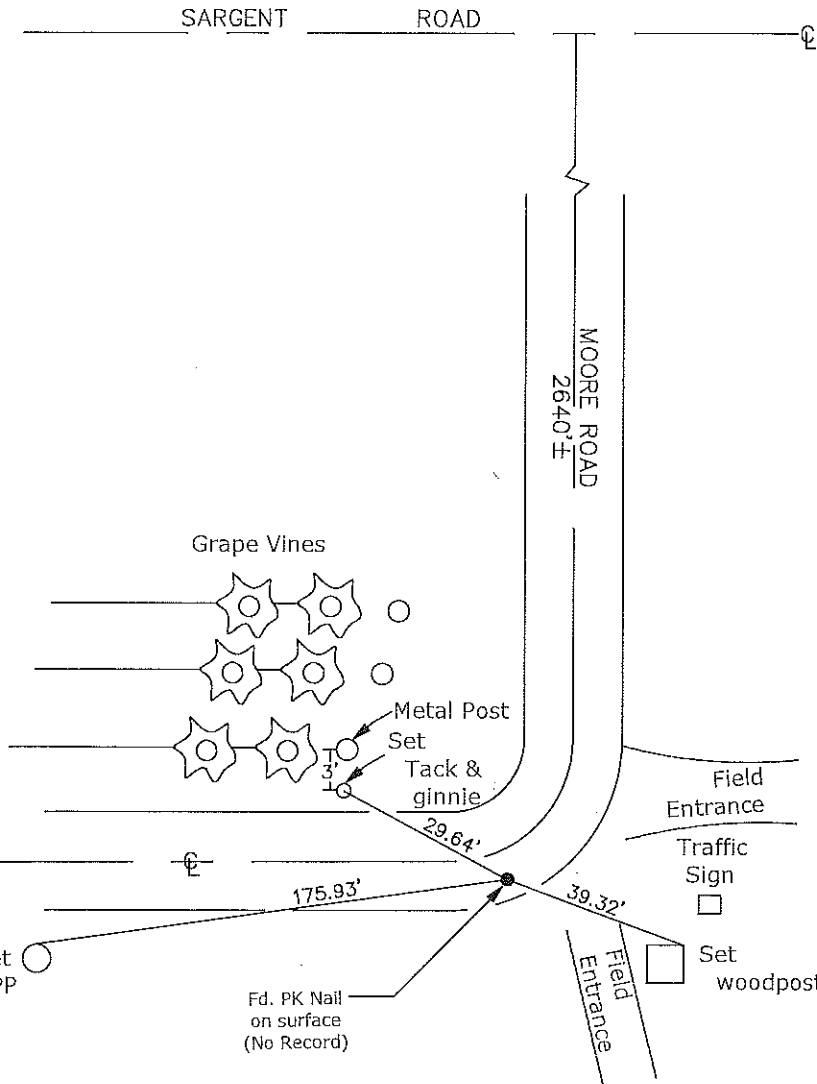
This Corner Record was received April 21, 2017
 and examined and filed May 17, 2017
 Signed Warren D. Smith P.L.S. or R.C.E. No. 4842
 Title County Surveyor



County Surveyor's Comment _____



N.T.S.



- CR=Corner Record
- FP=Fence Post
- JP=Joint Pole
- LP=Light Pole
- PP=Power Pole
- GP=Guy Pole
- SP=Service Pole
- TP=Telephone Pole
- S.F.N.=Searched Found Nothing
- N.T.S.=Not To Scale
- M&P=Maps & Plats
- PM=Parcel Map
- RS=Record of Survey
- FB=Field Book
- N=North
- DI=Drain Inlet
- TOC=Top of Curb
- FB=Field Book

Set=Conc. Nail with Brass Washer Stamped
 "S.J. Co.", unless otherwise noted
 Fd.=Found Conc. Nail with Brass Washer Stamped
 "S.J. Co.", unless otherwise noted
 Note: Found Monuments are not tagged
 unless otherwise noted.

"No Attempt Was Made to Verify the Monument(s)"