

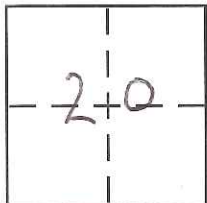
CORNER RECORD

Document Number CR-17-105

City of RIPON

County of SAN JOAQUIN, California

Brief Legal Description PORTION OF LOT 180 -- 25 MAP 125



T.2S, R.8E

CORNER TYPE

Government Corner Control
Meander Property
Rancho Other
Date of Survey 1/27 & 2/6/17

COORDINATES (Optional)

N. _____
E. _____
Zone _____ NAD27 NAD83
NAD83 Epoch _____
Elev. _____
Vert. Datum: NGVD29 NAVD88
Meas. Units: Metric Imperial

Corner - Left as found Found and tagged Established Reestablished Rebuilt

Identification and type of corner found: Evidence used to identify or procedure used to establish or reestablish the corner:

SEE SKETCH ON BACK.

A description of the physical condition of the monument as found and as set or reset:

SEE SKETCH ON BACK.

SURVEYOR'S STATEMENT

This Corner Record was prepared by me or under my direction in conformance with the Land Surveyor's Act on MARCH 27, 2017

Signed Michael Turnore (P.L.S. or R.C.E. No. 7454)



COUNTY SURVEYOR'S STATEMENT

This Corner Record was received March 29, 2017

and examined and filed May 2, 2017

Signed Warren D. Smith P.L.S. or R.C.E. No. 4842

Title County Surveyor



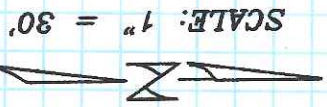
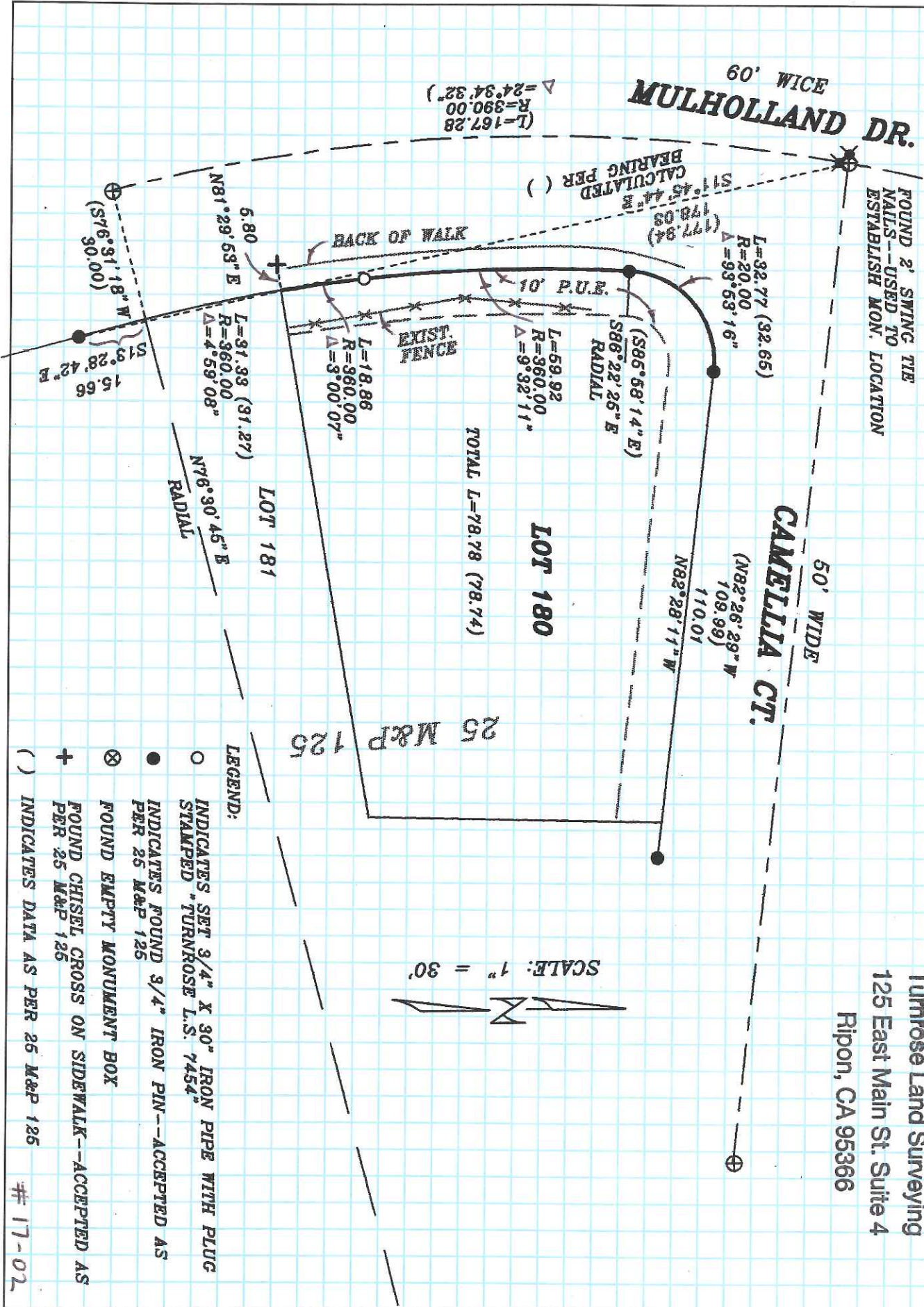
County Surveyor's Comment _____

MULHOLLAND DR. 60' WICE

FOUND 2' SWING TIE
NAILS--USED TO
ESTABLISH MON. LOCATION

CAMELLIA CT. 50' WIDE

Tumrose Land Surveying
125 East Main St. Suite 4
Ripon, CA 95366



LEGEND:

- INDICATES SET 3/4" X 30" IRON PIPE WITH PLUG STAMPED *TURNROSE L.S. 7454*
- INDICATES FOUND 3/4" IRON PIN--ACCEPTED AS PER 25 M&P 126
- ⊗ FOUND EMPTY MONUMENT BOX
- + FOUND CHISEL CROSS ON SIDEWALK--ACCEPTED AS PER 25 M&P 126
- () INDICATES DATA AS PER 25 M&P 126

17-02