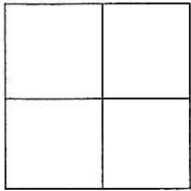


CORNER RECORD

Document Number CR-17-86  
County of San Joaquin, California

City of \_\_\_\_\_

Brief Legal Description SEXTON ROAD 910± NORTH OF LONE OAK ROAD  
(ON WEST LINE OF SECTION 18, TOWNSHIP 2 SOUTH, RANGE 9 EAST, MOUNT DIABLO BASE & MERIDIAN)



CORNER TYPE

Government Corner  Control   
Meander  Property   
Rancho  Other   
Date of Survey December 13, 2016

COORDINATES (Optional)

N. \_\_\_\_\_  
E. \_\_\_\_\_  
Zone \_\_\_\_\_ NAD27  NAD83   
NAD83 Epoch \_\_\_\_\_  
Elev. \_\_\_\_\_  
Vert. Datum: NGVD29  NAVD88   
Meas. Units: Metric  Imperial

Corner - Left as found  Found and tagged  Established  Reestablished  Rebuilt

Identification and type of corner found: Evidence used to identify or procedure used to establish or reestablish the corner:  
SEE SKETCH ON BACKSIDE.

A description of the physical condition of the monument as found and as set or reset:  
SEE SKETCH ON BACKSIDE.

SURVEYOR'S STATEMENT

This Corner Record was prepared by me or under my direction in conformance with the Land Surveyors' Act on March 27, 2017.

Signed James E Hart P.L.S. Number 8657

COUNTY SURVEYOR'S STATEMENT

This Corner Record was received March 27, 2017 and examined and filed April 18, 2017.

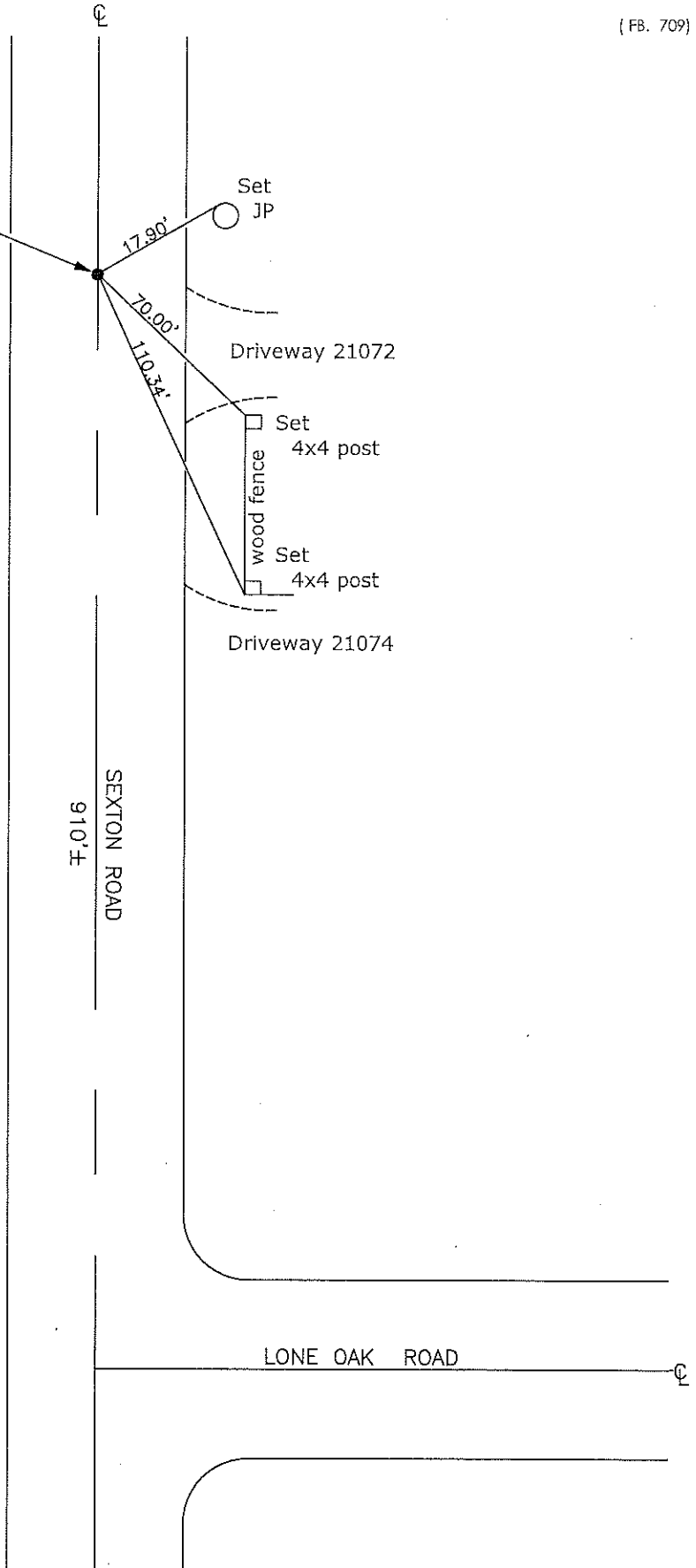
Signed Warren D. Smith P.L.S. No. 4842  
Title County Surveyor

County Surveyor's Comment \_\_\_\_\_





Fd. RR Spike per  
RS 12-111



Note: Found Monuments are not tagged unless otherwise noted.

"No Attempt Was Made to Verify the Monument(s)"

Set=Conc. Nail with Brass Washer Stamped  
"S.J. Co.", unless otherwise noted  
Fd.=Found Conc. Nail with Brass Washer Stamped  
"S.J. Co.", unless otherwise noted

CR=Corner Record  
FP=Fence Post  
JP=Joint Pole  
LP=Light Pole  
PP=Power Pole  
GP=Guy Pole  
SP=Service Pole  
TP=Telephone Pole  
S.F.N.=Searched Found Nothing  
N.T.S.=Not To Scale  
M&P=Maps & Plats  
PM=Parcel Map  
RS=Record of Survey  
FB=Field Book  
N=North  
DI=Drain Inlet  
TOC=Top of Curb