

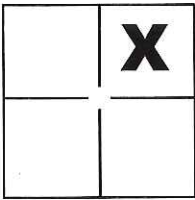
CORNER RECORD

Document Number CR-17-81

City of _____

County of San Joaquin, California

Brief Legal Description West line of Parcel "2" and Parcel "3" per P.M. 17-44, S.J.C.R.



CORNER TYPE

Government Corner Control
 Meander Property
 Rancho Other

COORDINATES(Optional)

N. _____
 E. _____
 Zone _____ NAD27 NAD83
 NAD83 Epoch _____
 Elev. _____
 Vert. Datum: NGVD29 NADV88
 Meas. Units: Metric Imperial

Sec. 10, T. 2S., R. 8E.,
M.D.B.&M.

Date of Survey December 30, 2016

Corner - Left as found Found and tagged Established Reestablished Rebuilt

Identification and type of corner found: Evidence used to identify or procedure used to establish or reestablish the corner:

See Sheet 2

A description of the physical condition of the monument as found and as set or reset: _____

See Sheet 2

SURVEYOR'S STATEMENT

This Corner Record was prepared by me or under my direction in conformance with the Land Surveyor's Act on JAN. 9, 2017.

Signed Michael L. Quartaroli P.L.S. or R.C.E. No.: L.S. 4450



COUNTY SURVEYOR'S STATEMENT

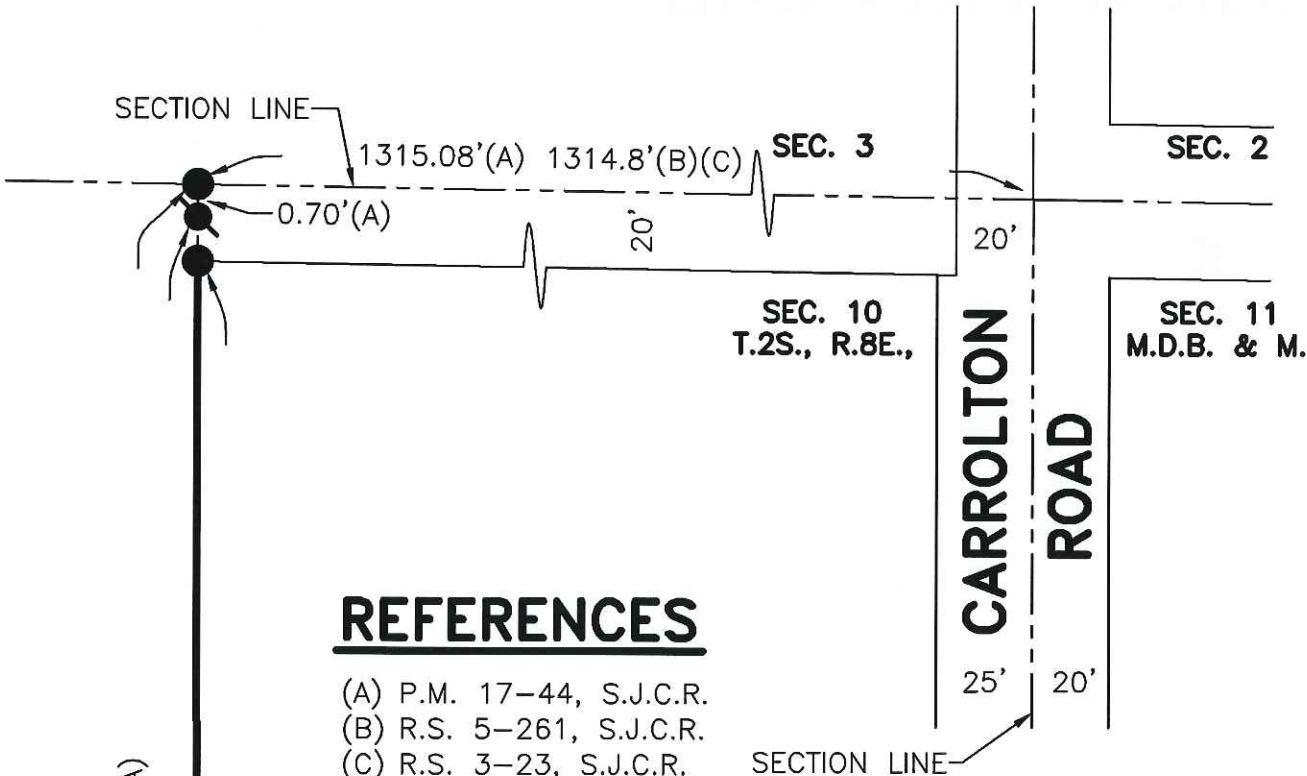
This Corner Record was received February 23, 2017 and examined and filed March 9, 2017.

Signed Warren D. Smith P.L.S. or R.C.E. No.: 4842

Title County Surveyor

County Surveyor's Comment _____





REFERENCES

- (A) P.M. 17-44, S.J.C.R.
- (B) R.S. 5-261, S.J.C.R.
- (C) R.S. 3-23, S.J.C.R.

LEGEND

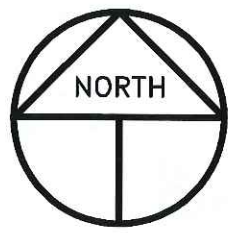
- INDICATES FOUND 3/4" IRON PIN PER (A) NOT TAGGED
- INDICATES FOUND AXLE PER (A)(B)(C), SET BRASS TAG STAMPED LS 4450 ON TOP OF AXLE
- P.M. INDICATES PARCEL MAP, BOOK AND PAGE, S.J.C.R.
- R.S. INDICATES RECORD OF SURVEY, BOOK AND PAGE, S.J.C.R.
- S.J.C.R. INDICATES SAN JOAQUIN COUNTY RECORDS
- S.F.N. INDICATES SEARCHED FOUND NOTHING
- CALC INDICATES CALCULATED FROM RECORD INFORMATION

602.07' CALC(A)
601.1'(B)(C)
561.89'(A)

P.M. 17-44

S.F.N.

SSJID 35'
CANAL 35'



SCALE: 1" = 50'
2016-297