

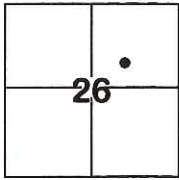
CORNER RECORD

Document Number CR-17-79

City of Lathrop

County of San Joaquin, California

Brief Legal Description Lots 27, 28, and 29, Block 73, of Volume 1 Maps & Plats, Page 68, S.J. County.



T. 1 S., R. 6 E., M.D.B.&M.

CORNER TYPE

Government Corner Control
 Meander Property
 Rancho Other

Date of Survey January 6, 2017

COORDINATES(Optional)

N. _____
 E. _____
 Zone _____ NAD27 NAD83
 NAD83 Epoch _____
 Elev. _____
 Vert. Datum: NGVD29 NADV88
 Meas. Units: Metric Imperial

Corner - Left as found Found and tagged Established Reestablished Rebuilt

Identification and type of corner found: Evidence used to identify or procedure used to establish or reestablish the corner:

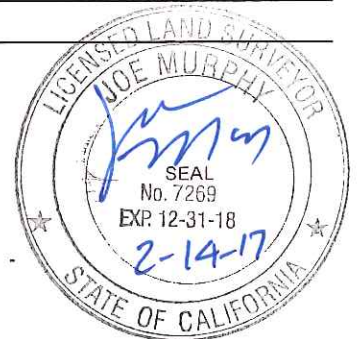
See sketch.

A description of the physical condition of the monument as found and as set or reset: See sketch.

SURVEYOR'S STATEMENT

This Corner Record was prepared by me or under my direction in conformance with the Land Surveyor's Act on January 6, 2017.

Signed Joe Murphy P.L.S. or R.C.E. No.: L.S. 7269



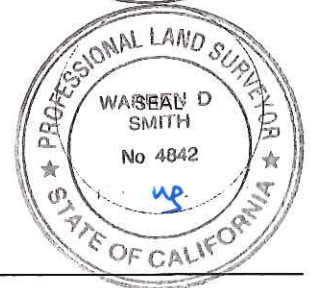
COUNTY SURVEYOR'S STATEMENT

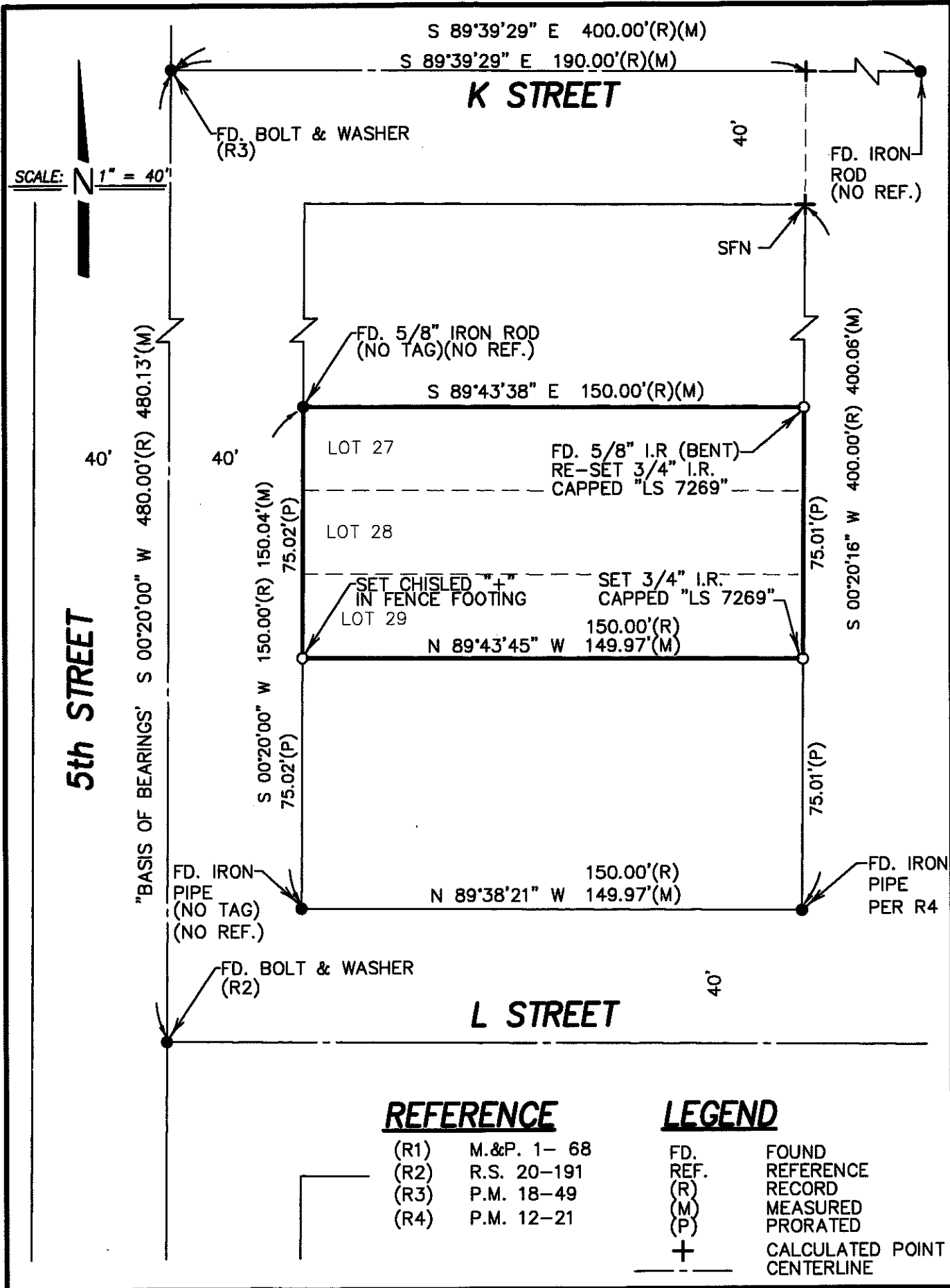
This Corner Record was received February 15, 2017 and examined and filed March 9, 2017.

Signed Wan D. Smith P.L.S. or R.C.E. No.: 4842

Title County Surveyor

County Surveyor's Comment _____





REFERENCE

- (R1) M.&P. 1- 68
- (R2) R.S. 20-191
- (R3) P.M. 18-49
- (R4) P.M. 12-21

LEGEND

- FD. FOUND
- REF. REFERENCE
- (R) RECORD
- (M) MEASURED
- (P) PRORATED
- + CALCULATED POINT
- - - CENTERLINE