

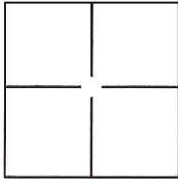
CORNER RECORD

Document Number CR-17-78

City of Stockton

County of San Joaquin, California

Brief Legal Description Projection of South lot line of Lot 147, 21 M.P. 24 at the East end thereof.



CORNER TYPE

Government Corner Control
 Meander Property
 Rancho Other

Date of Survey January 24, 2017

COORDINATES(Optional)

N. _____
 E. _____
 Zone _____ NAD27 NAD83
 NAD83 Epoch _____
 Elev. _____
 Vert. Datum: NGVD29 NADV88
 Meas. Units: Metric Imperial

Corner - Left as found Found and tagged Established Reestablished Rebuilt

Identification and type of corner found: Evidence used to identify or procedure used to establish or reestablish the corner:

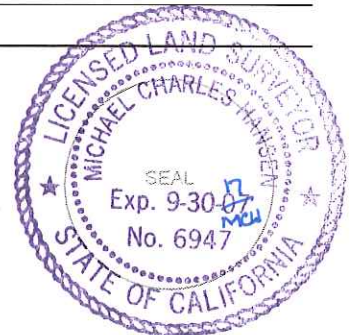
The Southerly lot line of Lot 147 was established based on found centerline monuments and record data per 21 M.P. 24.

A description of the physical condition of the monument as found and as set or reset: Set 1" brass disc stamped "LS 6947" in concrete sidewalk at six foot projection of lot line.

SURVEYOR'S STATEMENT

This Corner Record was prepared by me or under my direction in conformance with the Land Surveyor's Act on January 27, 2017.

Signed [Signature] P.L.S. or R.C.E. No.: L.S. 6947



COUNTY SURVEYOR'S STATEMENT

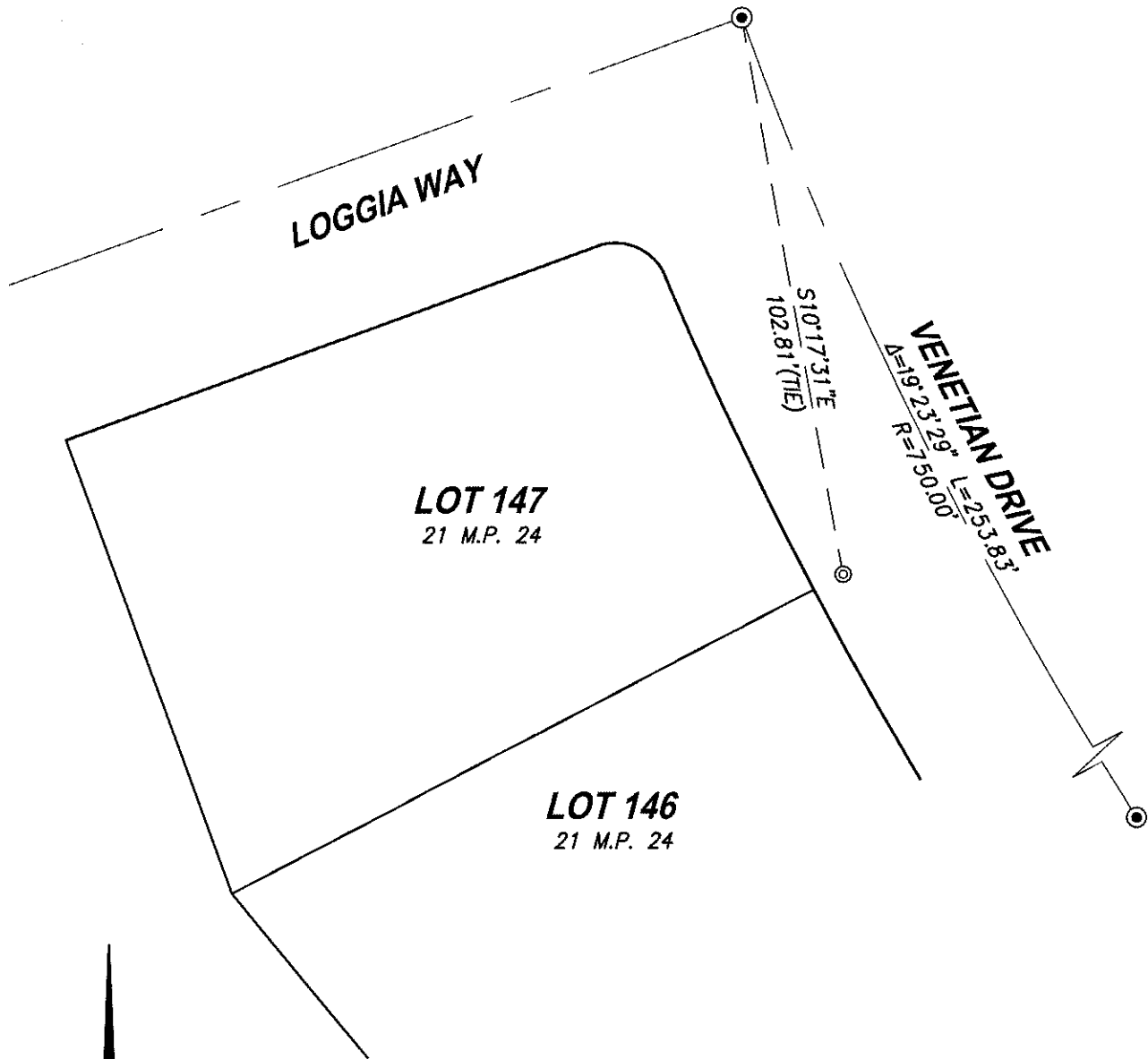
This Corner Record was received February 2, 2017 and examined and filed February 15, 2017.

Signed [Signature] P.L.S. or R.C.E. No.: 4842

Title County Surveyor

County Surveyor's Comment _____





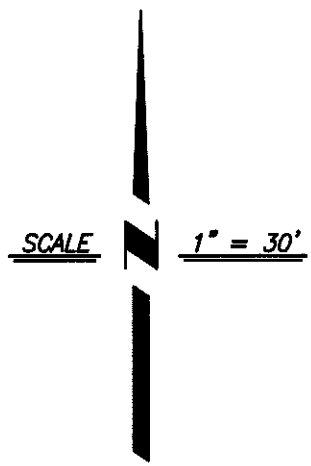
LOT 147
21 M.P. 24

LOT 146
21 M.P. 24

LOGGIA WAY

S10°17'31"
102.81' (TIE)

VENETIAN DRIVE
V=19°23'29" L=2533.83'
R=75000'



LEGEND:

⊙ -- SET 1" BRASS DISC "LS 6947" IN
SIDEWALK AT 6.00' PROJECTION OF LOT
LINE BASED ON FOUND CENTERLINE
MONUMENTS AND RECORD DATA.

⊙ -- FOUND 3/4" REBAR IN MONUMENT WELL
PER 21 M.P. 24

M.P. -- MAPS & PLATS

CenterPoint Engineering, Inc.

Civil Engineering & Land Surveying
1217 Pleasant Grove Blvd. Suite 130 • Roseville, CA • 95678
Phone: 916-773-4006 Fax: 916-773-4498



DRAWN BY: BB

CHECKED BY: MH

SHEET: 2 OF 2

SCALE: 1" = 30'

DATE: 1-27-2017