

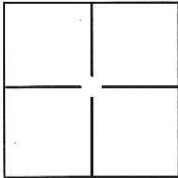
# CORNER RECORD

Document Number CR-17-75

City of Stockton

County of San Joaquin, California

Brief Legal Description Projection of North lot line of Lot 25, 22 M.P. 47 at the East end thereof.



### CORNER TYPE

Government Corner  Control   
Meander  Property   
Rancho  Other

Date of Survey January 24, 2017

### COORDINATES(Optional)

N. \_\_\_\_\_  
E. \_\_\_\_\_  
Zone \_\_\_\_\_ NAD27  NAD83   
NAD83 Epoch \_\_\_\_\_  
Elev. \_\_\_\_\_  
Vert. Datum: NGVD29  NADV88   
Meas. Units: Metric  Imperial

Corner - Left as found  Found and tagged  Established  Reestablished  Rebuilt

Identification and type of corner found: Evidence used to identify or procedure used to establish or reestablish the corner:

The location of the cut cross was reestablished based on found monuments and record coordinates per  
Corner Record 16-52.

A description of the physical condition of the monument as found and as set or reset: Set 1" brass disc stamped "LS 6947" in  
concrete sidewalk.

### SURVEYOR'S STATEMENT

This Corner Record was prepared by me or under my direction in conformance with  
the Land Surveyor's Act on January 27, 2017.

Signed [Signature] P.L.S. or R.C.E. No.: L.S. 6947



### COUNTY SURVEYOR'S STATEMENT

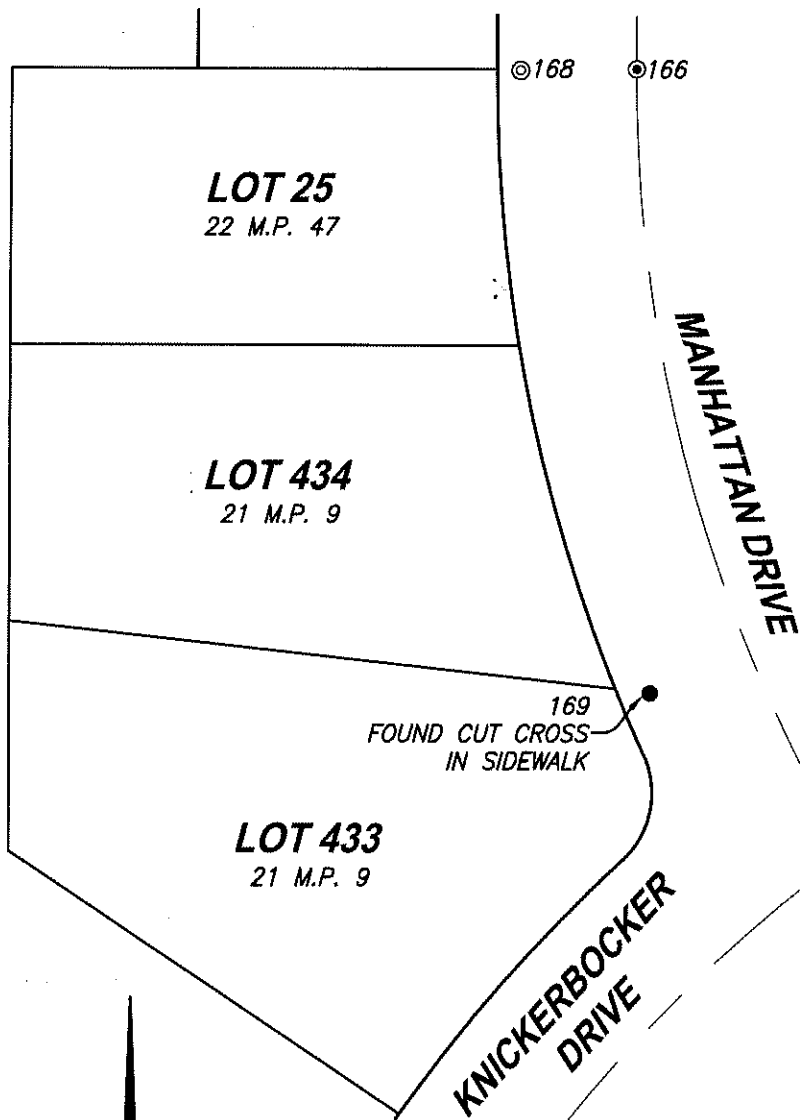
This Corner Record was received February 2, 2017 and examined  
and filed February 15, 2017.

Signed [Signature] P.L.S. or R.C.E. No.: 4842

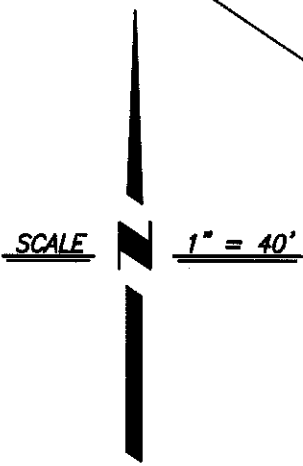
Title County Surveyor

County Surveyor's Comment \_\_\_\_\_





COORDINATES PER CR-16-52		
POINT #	NORTHING	EASTING
166	2196476.93	6331846.17
168	2196476.95	6331821.10
165	2196307.52	6331892.76
169	2196341.83	6331849.35



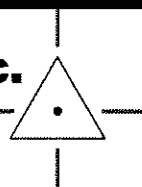
**LEGEND:**

- ⊙ - - SET 1" BRASS DISC "LS 6947" IN SIDEWALK BASED ON THE COORDINATES LISTED ON CORNER RECORD 16-52.
- ⊙ - - FOUND 3/4" IRON PIPE IN MONUMENT WELL PER 22 M.P. 47
- - - FOUND MONUMENT AS NOTED
- M.P. - - MAPS & PLATS

NOTE: NO ATTEMPT WAS MADE TO VERIFY MONUMENT

**CenterPoint Engineering, Inc.**

Civil Engineering & Land Surveying  
 1217 Pleasant Grove Blvd, Suite 130 • Roseville, CA • 95678  
 Phone: 916-773-4006 Fax: 916-773-4498



DRAWN BY: BB
CHECKED BY: MH
SHEET: 2 OF 2
SCALE: 1" = 40'
DATE: 1-27-2017