

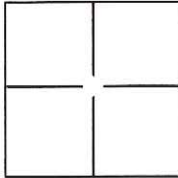
# CORNER RECORD

Document Number CR-17-74

City of Stockton

County of San Joaquin, California

Brief Legal Description Projection of NW lot line of Lot 105, 26 M.P. 61 at the NE end thereof.



### CORNER TYPE

Government Corner  Control   
 Meander  Property   
 Rancho  Other

Date of Survey January 24, 2017

### COORDINATES(Optional)

N. \_\_\_\_\_  
 E. \_\_\_\_\_  
 Zone \_\_\_\_\_ NAD27  NAD83   
 NAD83 Epoch \_\_\_\_\_  
 Elev. \_\_\_\_\_  
 Vert. Datum: NGVD29  NADV88   
 Meas. Units: Metric  Imperial

Corner - Left as found  Found and tagged  Established  Reestablished  Rebuilt

Identification and type of corner found: Evidence used to identify or procedure used to establish or reestablish the corner:

The Northwest lot line of Lot 105 was established based on found centerline monuments and record data per 26 M.P. 61.

A description of the physical condition of the monument as found and as set or reset: Set 1" brass disc stamped "LS 6947" in concrete sidewalk at five foot projection of lot line.

### SURVEYOR'S STATEMENT

This Corner Record was prepared by me or under my direction in conformance with the Land Surveyor's Act on January 27, 2017.

Signed [Signature] P.L.S. or R.C.E. No.: L.S. 6947



### COUNTY SURVEYOR'S STATEMENT

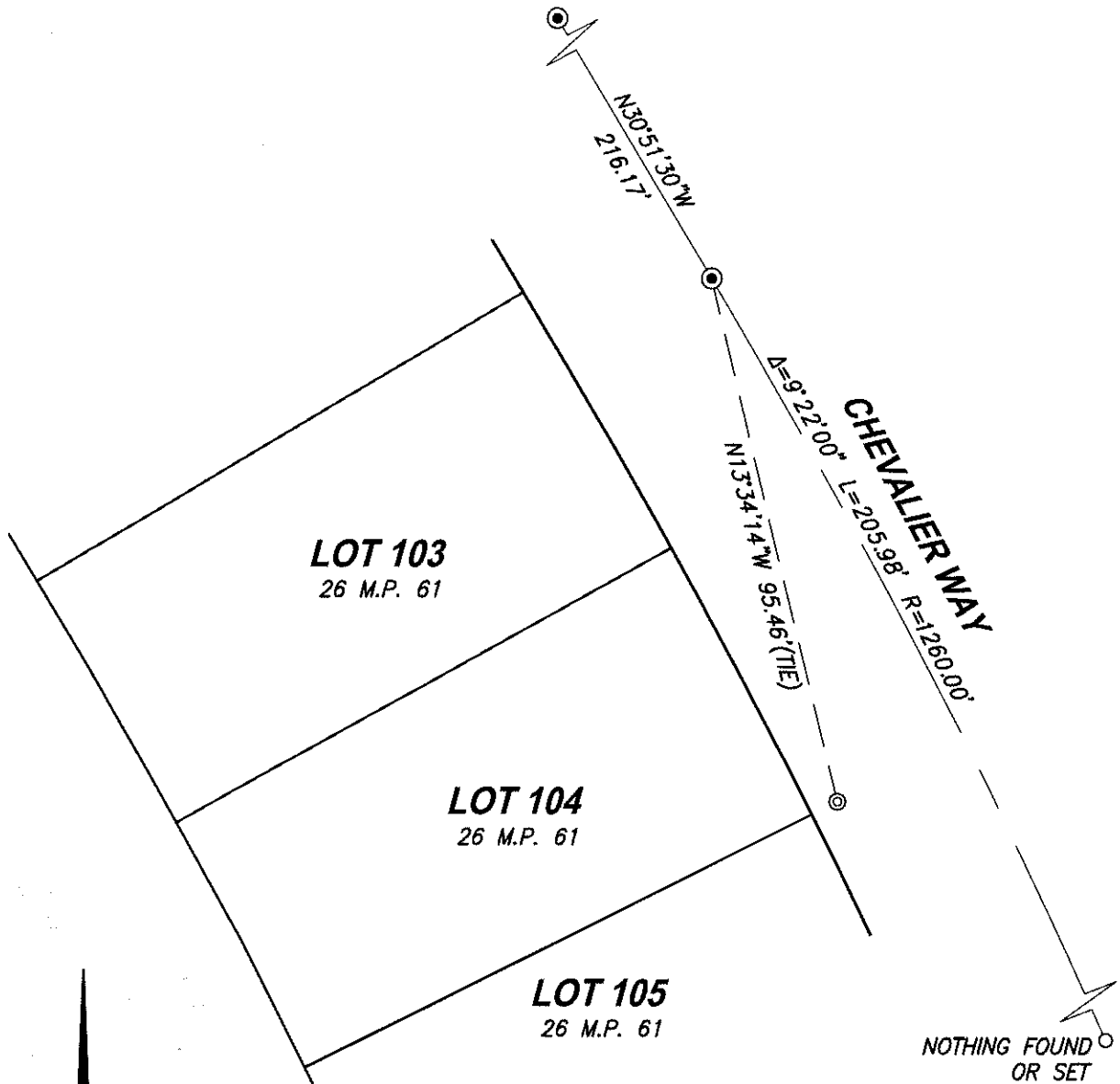
This Corner Record was received February 2, 2017 and examined and filed February 15, 2017.

Signed [Signature] P.L.S. or R.C.E. No.: 4842

Title \_\_\_\_\_

County Surveyor's Comment \_\_\_\_\_





SCALE 1" = 30'

**LEGEND:**

- ⊙ - - SET 1" BRASS DISC "LS 6947" IN SIDEWALK AT 5.00' PROJECTION OF LOT LINE BASED ON FOUND CENTERLINE MONUMENTS AND RECORD DATA.
- ⊙ - - FOUND 3/4" REBAR IN MONUMENT WELL PER 26 M.P. 61
- M.P. - - MAPS & PLATS

**CenterPoint Engineering, Inc.**

Civil Engineering & Land Surveying  
1217 Pleasant Grove Blvd. Suite 130 • Roseville, CA • 95678  
Phone: 916-773-4006 Fax: 916-773-4498



DRAWN BY: BB
CHECKED BY: MH
SHEET: 2 OF 2
SCALE: 1" = 30'
DATE: 1-27-2017