

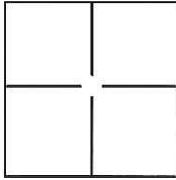
CORNER RECORD

Document Number CR-17-73

City of Stockton

County of San Joaquin, California

Brief Legal Description Projection of South lot line of Lot 189, 20 M.P. 49 at the West end thereof.



CORNER TYPE

Government Corner Control
 Meander Property
 Rancho Other

Date of Survey January 24, 2017

COORDINATES(Optional)

N. _____
 E. _____
 Zone _____ NAD27 NAD83
 NAD83 Epoch _____
 Elev. _____
 Vert. Datum: NGVD29 NADV88
 Meas. Units: Metric Imperial

Corner - Left as found Found and tagged Established Reestablished Rebuilt

Identification and type of corner found: Evidence used to identify or procedure used to establish or reestablish the corner:
A 1" brass disc stamped "LS 6947" was set on an existing cut cross in sidewalk at the presumed extension of the lot line.

A description of the physical condition of the monument as found and as set or reset: A 1" brass disc stamped "LS 6947" was set on an existing cut cross in sidewalk at the presumed extension of the lot line.

SURVEYOR'S STATEMENT

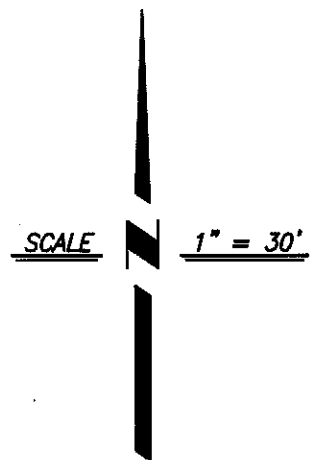
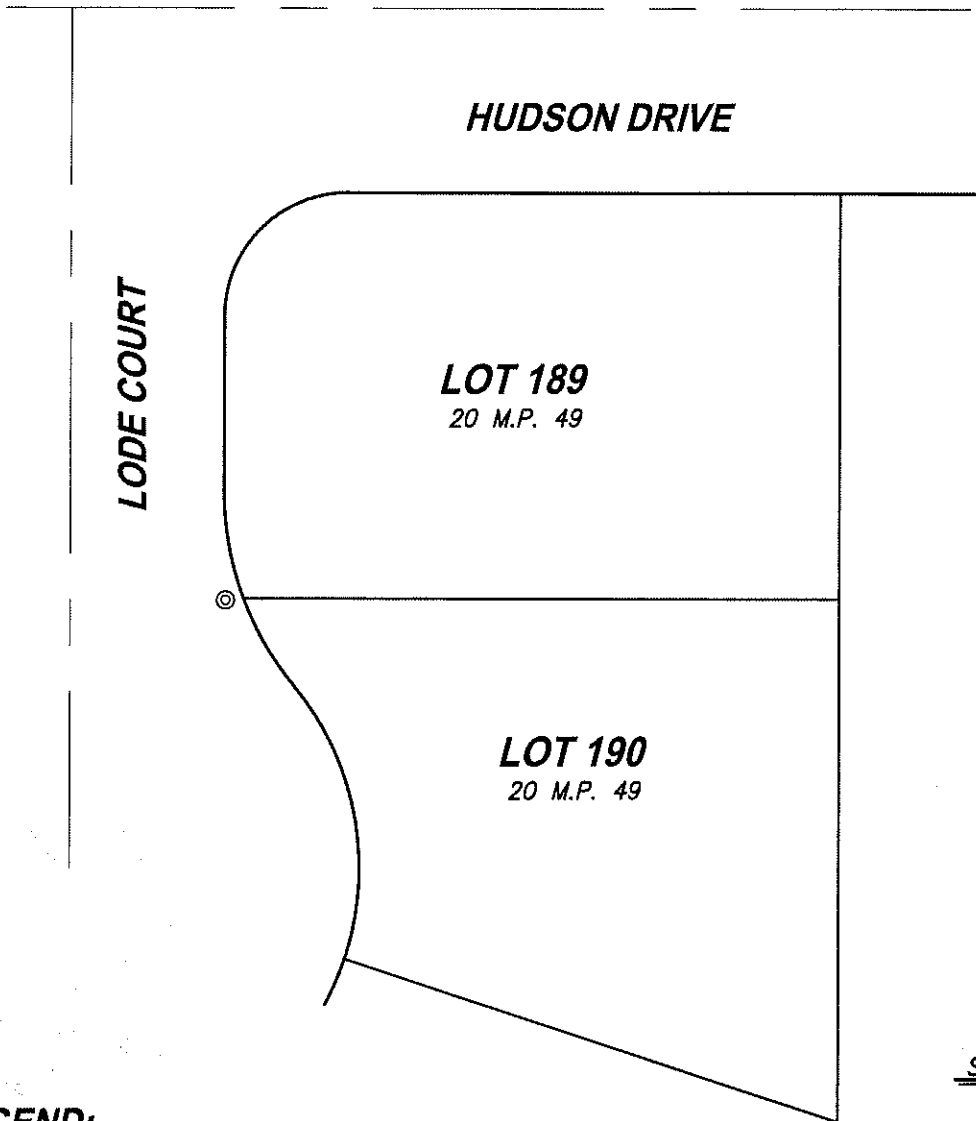
This Corner Record was prepared by me or under my direction in conformance with the Land Surveyor's Act on January 27, 2017.
 Signed [Signature] P.L.S. or R.C.E. No.: L.S. 6947



COUNTY SURVEYOR'S STATEMENT

This Corner Record was received February 2, 2017 and examined and filed February 15, 2017.
 Signed [Signature] P.L.S. or R.C.E. No.: 4842
 Title County Surveyor
 County Surveyor's Comment _____





LEGEND:

⊙ — — SET 1" BRASS DISC "LS 6947" IN
SIDEWALK AT LOCATION OF EXISTING
CUT CROSS.

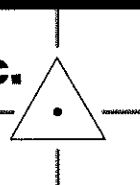
M.P. — — MAPS & PLATS

NOTE: NO ATTEMPT WAS MADE TO VERIFY MONUMENT

CenterPoint Engineering, Inc.

Civil Engineering & Land Surveying

1217 Pleasant Grove Blvd, Suite 130 • Roseville, CA • 95678
Phone: 916-773-4006 Fax: 916-773-4498



DRAWN BY: BB

CHECKED BY: MH

SHEET: 2 OF 2

SCALE: 1" = 30'

DATE: 1-27-2017