

# CORNER RECORD

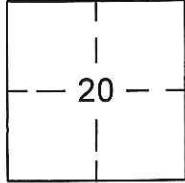
Document Number CR-17-70  
County of SAN JOAQUIN, California

City of RIPON

Brief Legal Description TRACT NO. 2986, OAK TERRACE ESTATES RECORDED IN BOOK 34 OF MAPS & PLATS, PAGE 79, IN N.E. 1/4 OF SECTION 20, T. 2 S., R. 8 E., M.D.M.

### CORNER TYPE:

### COORDINATES (Optional)



T. 2 S., R. 8 E.

Government Corner  Control   
Meander  Property   
Rancho  Other

Date of Survey DECEMBER 9, 2016

N. \_\_\_\_\_  
E. \_\_\_\_\_  
Zone \_\_\_\_\_ NAD27  NAD83   
NAD83 Epoch \_\_\_\_\_  
Elev. \_\_\_\_\_  
Vert. Datum: NGVD29  NAVD88   
Meas. Units Metric  Imperial

Corner- Left as found  Found and tagged  Established  Reestablished  Rebuilt

Identification and type of corner found: Evidence used to identify or procedure used to establish or reestablish the corner:

FOUND CENTERLINE MONUMENTS IN OAK TERRACE COURT AND MANLEY ROAD.

LOCATED MONUMENTS BY G.P.S. TIED TO CITY OF RIPON G.P.S. SURVEY CONTROL NETWORK

RECORDED IN BOOK 35 OF SURVEYS, PAGE 196, SAN JOAQUIN COUNTY RECORDS.

MONUMENTS SURVIVED ROAD RESURFACING.

A description of the physical condition of the monument as found and as set or reset:

SEE PAGE 2 FOR MONUMENT DESCRIPTIONS. FOUND MONUMENTS IN SAME CONDITION AS

SHOWN ON CORNER RECORD 16-450, AFTER ROAD RESURFACING.

### SURVEYOR'S STATEMENT

This Corner Record was prepared by me or under my direction in conformance with the Land Surveyor's Act on December 30, 2016.

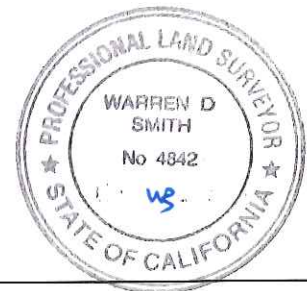
Signed [Signature] P.L.S. No. 7823



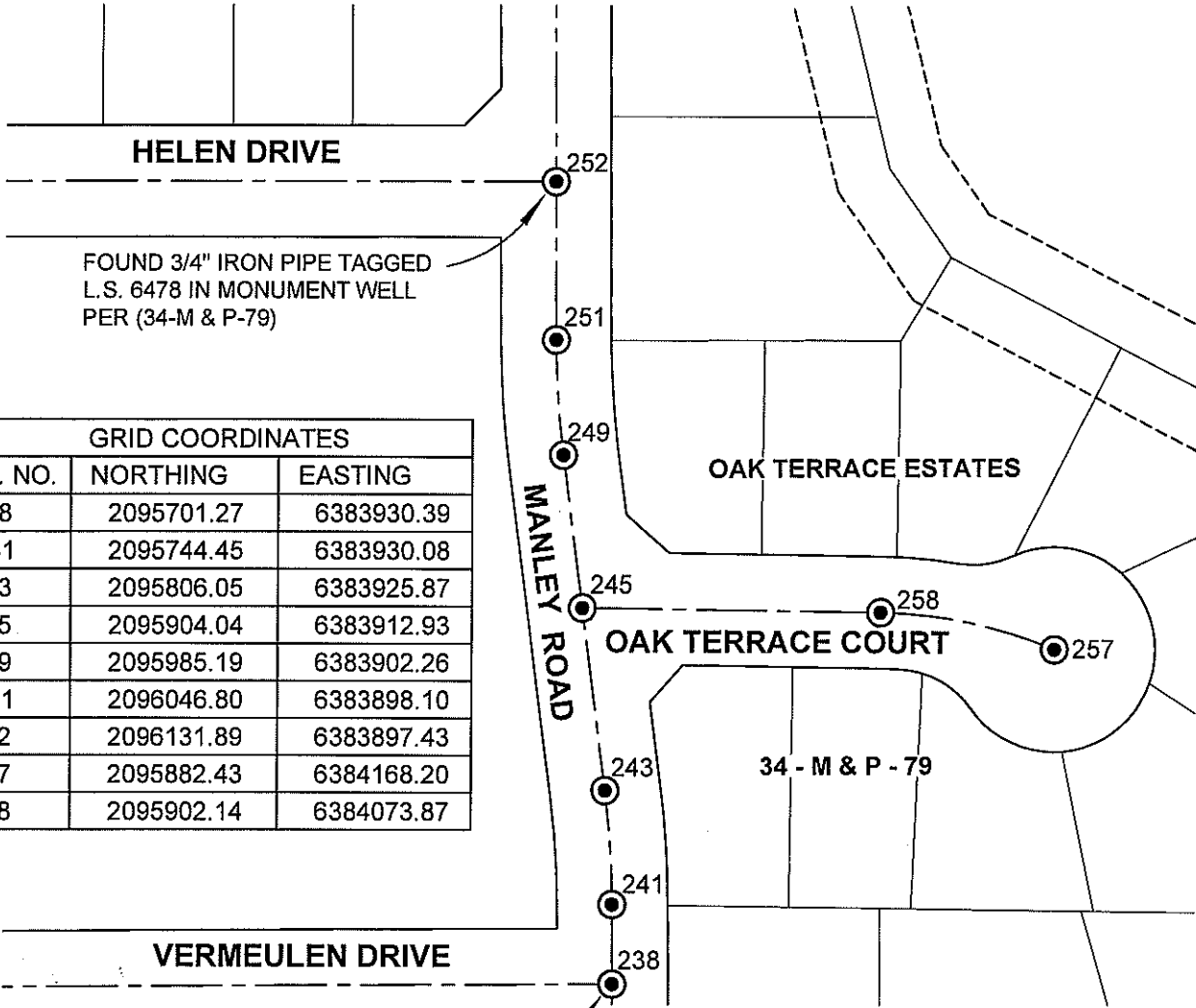
### COUNTY SURVEYOR'S STATEMENT

This Corner Record was received January 5, 2017 and examined and filed January 30, 2017.

Signed [Signature] P.L.S. or R.C.E. No. 4842  
Title County Surveyor



County Surveyor's Comment: \_\_\_\_\_



FOUND 3/4" IRON PIPE TAGGED  
L.S. 6478 IN MONUMENT WELL  
PER (34-M & P-79)

GRID COORDINATES		
MON. NO.	NORTHING	EASTING
238	2095701.27	6383930.39
241	2095744.45	6383930.08
243	2095806.05	6383925.87
245	2095904.04	6383912.93
249	2095985.19	6383902.26
251	2096046.80	6383898.10
252	2096131.89	6383897.43
257	2095882.43	6384168.20
258	2095902.14	6384073.87

FOUND 3/4" IRON PIPE TAGGED  
L.S. 6406 IN MONUMENT WELL  
PER CORNER RECORD NO. 11-52

**NOTE:**  
LOCATED MONUMENTS BY G.P.S. TIED TO CITY  
OF RIPON G.P.S. SURVEY CONTROL NETWORK  
RECORDED IN BOOK 35 OF SURVEYS, PAGE  
196, SAN JOAQUIN COUNTY RECORDS.

**LEGEND**

- FOUND 3/4" IRON PIPE TAGGED R.C.E. 31008 IN MONUMENT WELL PER BOOK 34 OF MAPS & PLATS, PAGE 79, UNLESS OTHERWISE NOTED.



SCALE 1" = 100'