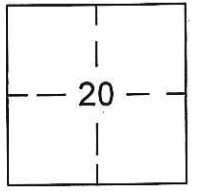


CORNER RECORD

Document Number CR-17-68
County of SAN JOAQUIN, California

City of RIPON

Brief Legal Description TRACT NO. 1899, AMANDEL ESTATES UNIT NO. 2, RECORDED IN BOOK 27 OF MAPS & PLATS, PAGE 13, IN N.W. 1/4 OF SECTION 20, T. 2 S., R. 8 E., M.D.M.



T. 2 S., R. 8 E.

CORNER TYPE:

Government Corner Control
Meander Property
Rancho Other
Date of Survey DECEMBER 9, 2016

COORDINATES (Optional)

N. _____
E. _____
Zone _____ NAD27 NAD83
NAD83 Epoch _____
Elev. _____
Vert. Datum: NGVD29 NAVD88
Meas. Units: Metric Imperial

Corner- Left as found Found and tagged Established Reestablished Rebuilt

Identification and type of corner found: Evidence used to identify or procedure used to establish or reestablish the corner:

FOUND CENTERLINE MONUMENT IN SULTANA COURT PER AMANDEL ESTATES UNIT NO. 2

RECORDED IN BOOK 27 OF MAPS & PLATS, PAGE 13, SAN JOAQUIN COUNTY RECORDS.

LOCATED MONUMENT BY G.P.S. TIED TO CITY OF RIPON G.P.S. SURVEY CONTROL NETWORK

RECORDED IN BOOK 35 OF SURVEYS, PAGE 196, SAN JOAQUIN COUNTY RECORDS.

MONUMENTS SURVIVED ROAD RESURFACING.

A description of the physical condition of the monument as found and as set or reset:

SEE PAGE 2 FOR MONUMENT DESCRIPTIONS. FOUND MONUMENTS IN SAME CONDITION AS

SHOWN ON CORNER RECORD 16-448, AFTER ROAD RESURFACING.

SURVEYOR'S STATEMENT

This Corner Record was prepared by me or under my direction in conformance with the Land Surveyor's Act on December 30, 2016.

Signed Sean Harp P.L.S. No. 7823



COUNTY SURVEYOR'S STATEMENT

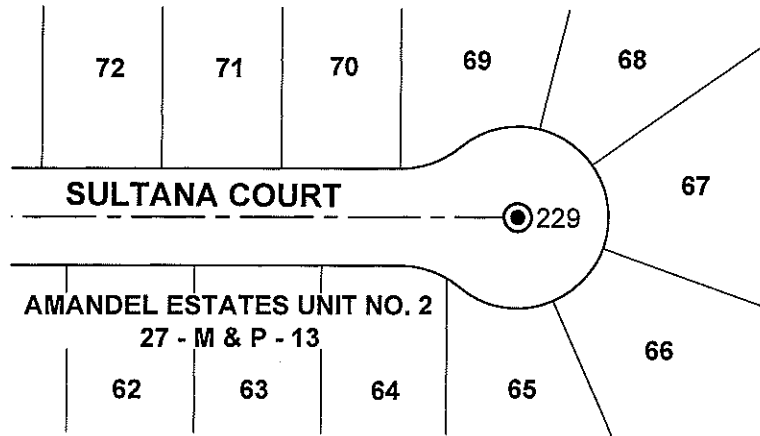
This Corner Record was received January 5, 2017 and examined and filed January 30, 2017.

Signed Warren D. Smith P.L.S. or R.C.E. No. 4842

Title County Surveyor



County Surveyor's Comment: _____



GRID COORDINATES		
MON. NO.	NORTHING	EASTING
229	2095187.11	6383106.06

NOTE:

LOCATED MONUMENTS BY G.P.S. TIED TO CITY OF RIPON G.P.S. SURVEY CONTROL NETWORK RECORDED IN BOOK 35 OF SURVEYS, PAGE 196, SAN JOAQUIN COUNTY RECORDS.

LEGEND

- FOUND 3/4" IRON PIPE TAGGED L.S. 4876 IN MONUMENT WELL PER BOOK 27 OF MAPS & PLATS, PAGE 13.



SCALE 1" = 100'