

# CORNER RECORD

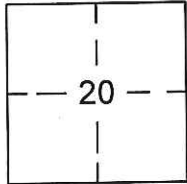
Document Number CR-17-64  
 County of SAN JOAQUIN, California

City of RIPON

Brief Legal Description TRACT NO. 2089, OLIVE GROVE ESTATES UNIT NO. 2, RECORDED IN BOOK 28 OF MAPS & PLATS, PAGE 20, IN S.E. 1/4 OF SECTION 20, T. 2 S., R. 8 E., M.D.M.

CORNER TYPE:

COORDINATES (Optional)



T. 2 S., R. 8 E.

Government Corner  Control   
 Meander  Property   
 Rancho  Other   
 Date of Survey DECEMBER 8, 2016

N. \_\_\_\_\_  
 E. \_\_\_\_\_  
 Zone \_\_\_\_\_ NAD27  NAD83   
 NAD83 Epoch \_\_\_\_\_  
 Elev. \_\_\_\_\_  
 Vert. Datum: NGVD29  NAVD88   
 Meas. Units Metric  Imperial

Corner- Left as found  Found and tagged  Established  Reestablished  Rebuilt

Identification and type of corner found: Evidence used to identify or procedure used to establish or reestablish the corner:  
FOUND CENTERLINE MONUMENTS IN TOPAZ LANE AND TOPAZ COURT PER OLIVE GROVE ESTATES UNIT NO. 2 RECORDED IN BOOK 28 OF MAPS & PLATS, PAGE 20, SAN JOAQUIN COUNTY RECORDS.  
LOCATED MONUMENTS BY G.P.S. TIED TO CITY OF RIPON G.P.S. SURVEY CONTROL NETWORK RECORDED IN BOOK 35 OF SURVEYS, PAGE 196, SAN JOAQUIN COUNTY RECORDS.  
MONUMENTS SURVIVED ROAD RESURFACING.

A description of the physical condition of the monument as found and as set or reset: \_\_\_\_\_  
SEE PAGE 2 FOR MONUMENT DESCRIPTIONS. FOUND MONUMENTS IN SAME CONDITION AS SHOWN ON CORNER RECORD 16-456, AFTER ROAD RESURFACING.

## SURVEYOR'S STATEMENT

This Corner Record was prepared by me or under my direction in conformance with the Land Surveyor's Act on December 30, 2016.

Signed Seán Harp P.L.S. No. 7823

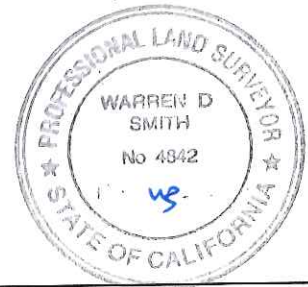


## COUNTY SURVEYOR'S STATEMENT

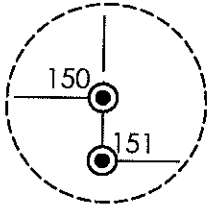
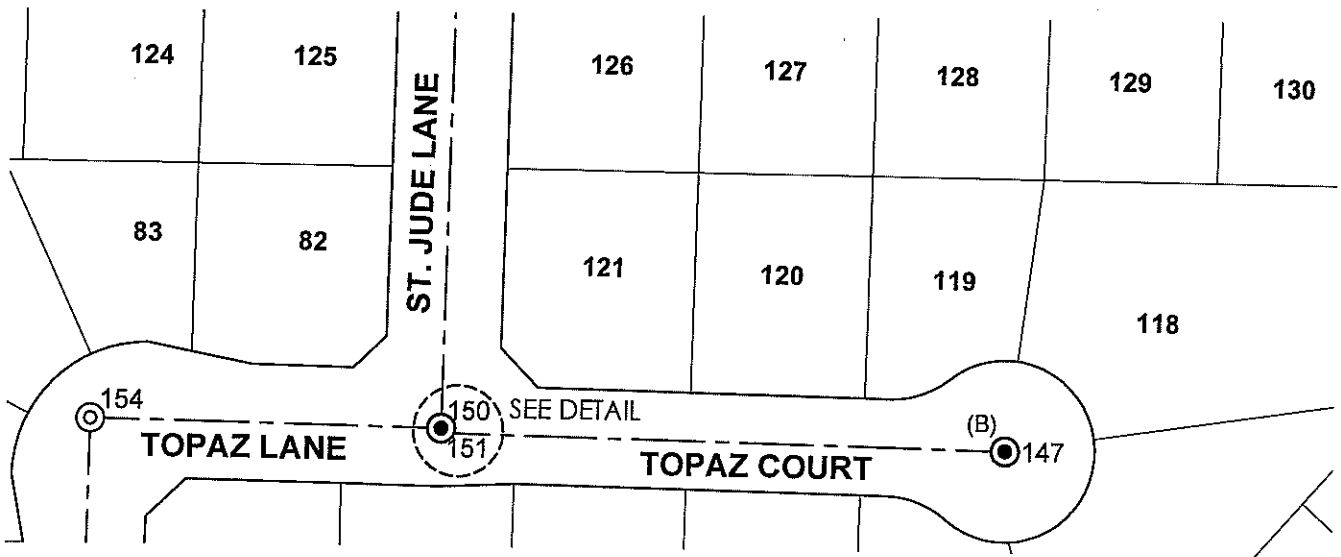
This Corner Record was received January 5, 2017 and examined and filed January 30, 2017.

Signed Warren D. Smith P.L.S. or R.C.E. No. 4842

Title County Surveyor



County Surveyor's Comment: \_\_\_\_\_  
 \_\_\_\_\_  
 \_\_\_\_\_  
 \_\_\_\_\_



**DETAIL**  
NOT TO SCALE

GRID COORDINATES		
MON. NO.	NORTHING	EASTING
147	2094105.46	6384675.64
150	2094113.76	6384381.43
151	2094111.27	6384381.41
154	2094117.35	6384200.65

**NOTE:**  
LOCATED MONUMENTS BY G.P.S. TIED TO CITY OF RIPON G.P.S. SURVEY CONTROL NETWORK RECORDED IN BOOK 35 OF SURVEYS, PAGE 196, SAN JOAQUIN COUNTY RECORDS.

**LEGEND**

- FOUND 3/4" IRON PIPE TAGGED L.S. 5123 IN MONUMENT WELL PER (B), UNLESS OTHERWISE NOTED.
- FOUND 3/4" IRON PIPE (B), NO TAG, IN MONUMENT WELL, UNLESS OTHERWISE NOTED.
- (B) BOOK 28 OF MAPS AND PLATS, PAGE 20



SCALE 1" = 100'