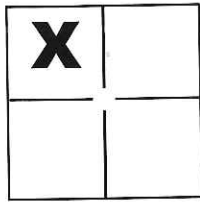


CORNER RECORD

Document Number CR-17-52
 County of San Joaquin, California

City of _____

Brief Legal Description The East, West and South line of Parcel "1" as shown on P.M. 24-80, S.J.C.R.



Sec. 3, T. 3S., R. 5E.,
M.D.B.&M.

CORNER TYPE

Government Corner Control
 Meander Property
 Rancho Other

Date of Survey September 30, 2016

COORDINATES(Optional)

N. _____
 E. _____
 Zone _____ NAD27 NAD83
 NAD83 Epoch _____
 Elev. _____
 Vert. Datum: NGVD29 NADV88
 Meas. Units: Metric Imperial

Corner - Left as found Found and tagged Established Reestablished Rebuilt

Identification and type of corner found: Evidence used to identify or procedure used to establish or reestablish the corner:
See Sheet 2

A description of the physical condition of the monument as found and as set or reset:
See Sheet 2

SURVEYOR'S STATEMENT

This Corner Record was prepared by me or under my direction in conformance with the Land Surveyor's Act on Oct. 14, 2016.

Signed Michael L. Quaratoro P.L.S. or R.C.E. No.: L.S. 4450



COUNTY SURVEYOR'S STATEMENT

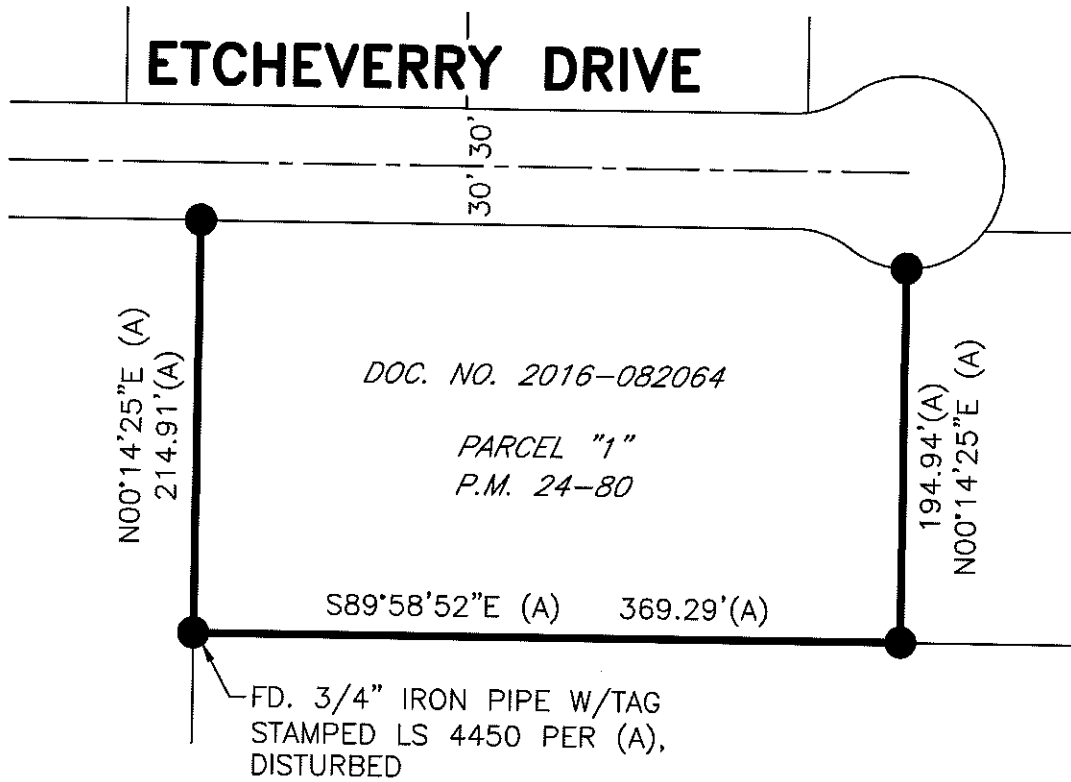
This Corner Record was received December 9, 2016 and examined and filed January 10, 2017.

Signed Warren D. Smith P.L.S. or R.C.E. No.: 4842

Title County Surveyor

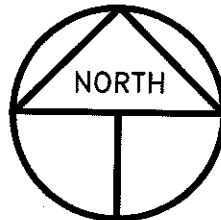
County Surveyor's Comment _____





REFERENCE

(A) P.M. 24-80, S.J.C.R.



SCALE: 1" = 100'
2016-170

LEGEND

- INDICATES FOUND 3/4" X 30" IRON PIPE W/TAG STAMPED LS 4450 PER (A), SET PLASTIC CAP STAMPED LS 4450, UNLESS NOTED OTHERWISE
- P.M. INDICATES PARCEL MAP, BOOK AND PAGE, S.J.C.R.
- S.J.C.R. INDICATES SAN JOAQUIN COUNTY RECORDS
- FD. INDICATES FOUND ON THIS SURVEY