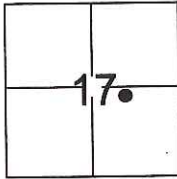


CORNER RECORD

Document Number CR-17-30
County of San Joaquin, California

City of _____
Brief Legal Description 53.229 AC. Parcel, R.S. 34-125



T.2N., R.8E., M.D.B.&M.

CORNER TYPE

Government Corner Control
Meander Property
Rancho Other

Date of Survey October 12, 2016

COORDINATES(Optional)

N. _____
E. _____
Zone _____ NAD27 NAD83
NAD83 Epoch _____
Elev. _____
Vert. Datum: NGVD29 NADV88
Meas. Units: Metric Imperial

Corner - Left as found Found and tagged Established Reestablished Rebuilt

Identification and type of corner found: Evidence used to identify or procedure used to establish or reestablish the corner:
See sketch.

A description of the physical condition of the monument as found and as set or reset: See sketch.

SURVEYOR'S STATEMENT

This Corner Record was prepared by me or under my direction in conformance with the Land Surveyor's Act on December 23, 2016.

Signed [Signature] P.L.S. or R.C.E. No.: _____ L.S. 7269



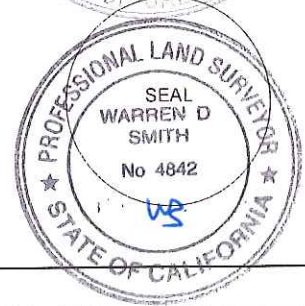
COUNTY SURVEYOR'S STATEMENT

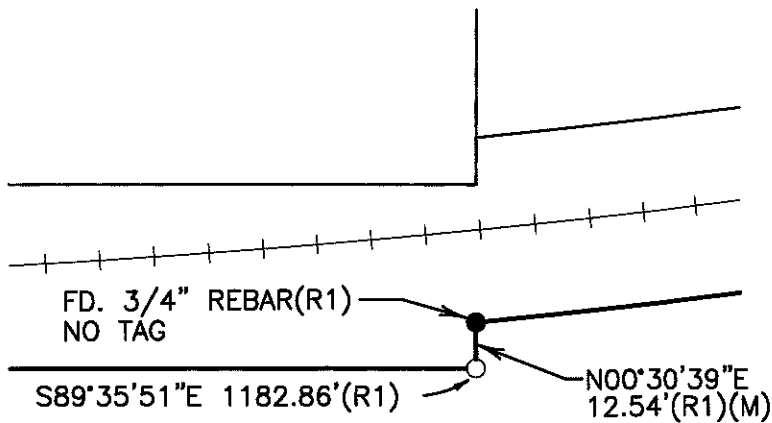
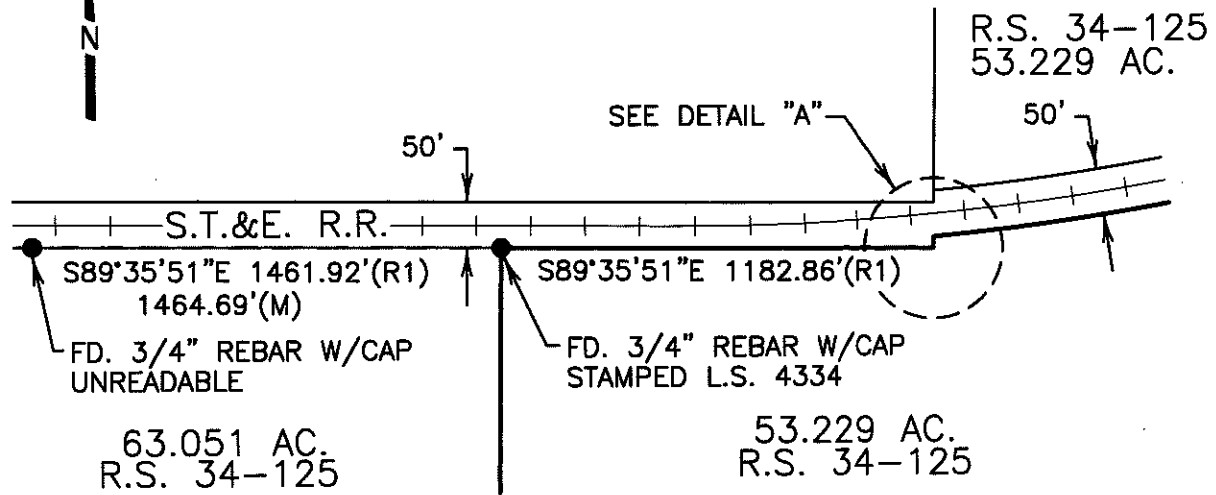
This Corner Record was received January 3, 2017 and examined and filed January 10, 2017.

Signed [Signature] P.L.S. or R.C.E. No.: 4842

Title County Surveyor

County Surveyor's Comment _____





DETAIL "A"

LEGEND

- FD. (M) ● FOUND MEASURED FOUND MONUMENT AS NOTED
- SET 3/4" IRON ROD, WITH CAP STAMPED "L.S. 7269"

REFERENCES

(R1) R.S. 34-125

DILLON & MURPHY
 CONSULTING CIVIL ENGINEERS
 ENGINEERING • PLANNING • SURVEYING
 847 N. CLIFF AVENUE, SUITE A2, LODI, CALIFORNIA 95240 (209) 334-0613
 1696