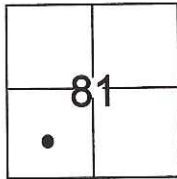


# CORNER RECORD

Document Number OR-17-35  
County of San Joaquin, California

City of \_\_\_\_\_  
Brief Legal Description Parcel A, P.M. 11-153



C.M. Weber Grant

### CORNER TYPE

Government Corner  Control   
Meander  Property   
Rancho  Other

Date of Survey October 13, 2016

### COORDINATES(Optional)

N. \_\_\_\_\_  
E. \_\_\_\_\_  
Zone \_\_\_\_\_ NAD27  NAD83   
NAD83 Epoch \_\_\_\_\_  
Elev. \_\_\_\_\_  
Vert. Datum: NGVD29  NADV88   
Meas. Units: Metric  Imperial

Corner - Left as found  Found and tagged  Established  Reestablished  Rebuilt

Identification and type of corner found: Evidence used to identify or procedure used to establish or reestablish the corner:  
See sketch.

A description of the physical condition of the monument as found and as set or reset: See sketch.

### SURVEYOR'S STATEMENT

This Corner Record was prepared by me or under my direction in conformance with the Land Surveyor's Act on December 23, 2016.

Signed [Signature] P.L.S. or R.C.E. No.: L.S. 7269



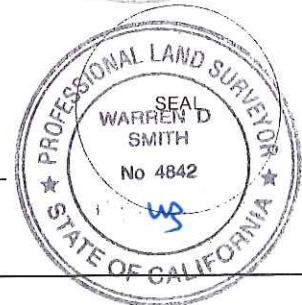
### COUNTY SURVEYOR'S STATEMENT

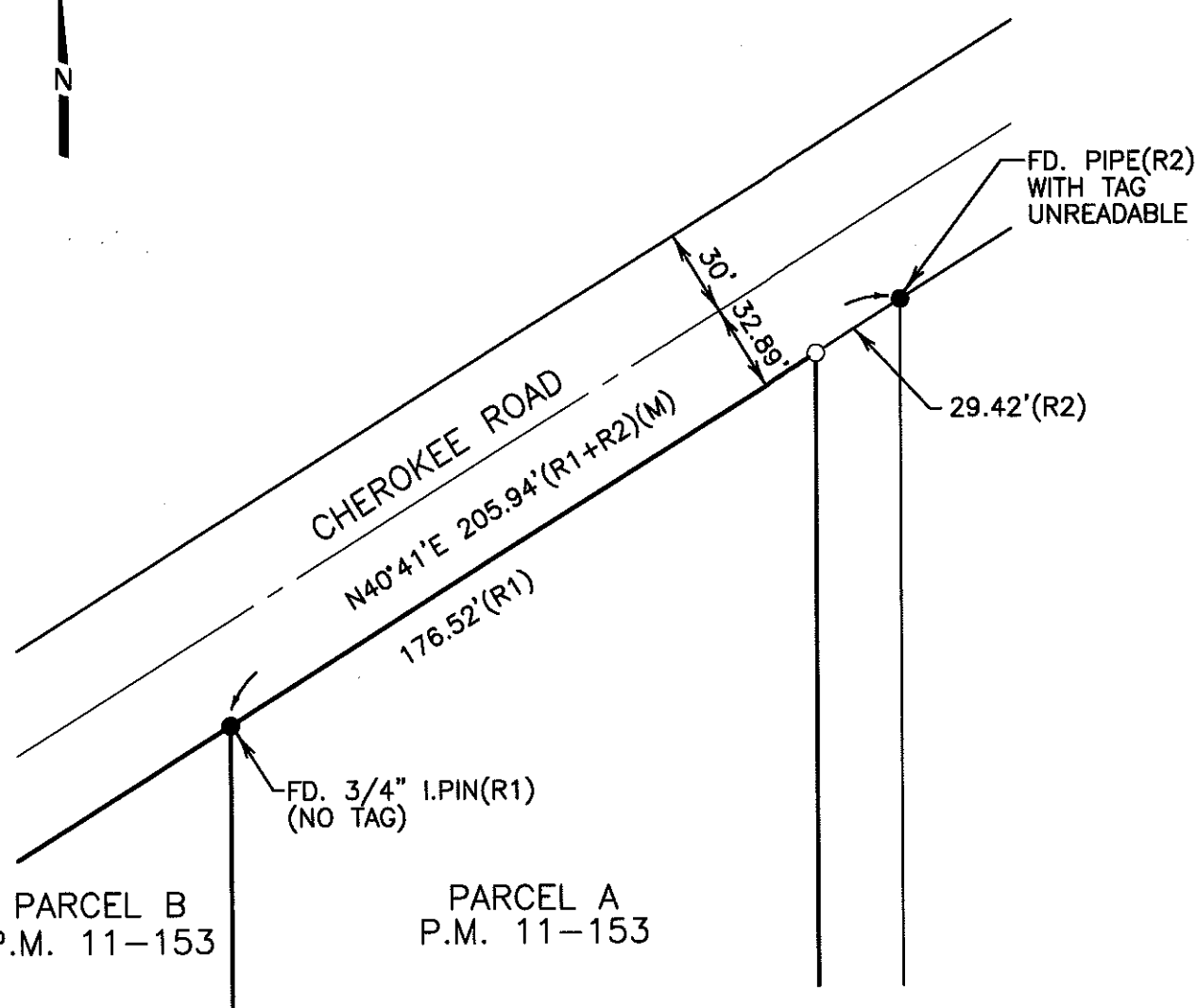
This Corner Record was received January 3, 2017 and examined and filed January 10, 2017

Signed [Signature] P.L.S. or R.C.E. No.: 4842

Title County Surveyor

County Surveyor's Comment \_\_\_\_\_





**LEGEND**

- FD. FOUND
- I.PIN IRON PIN
- (M) MEASURED
- FOUND MONUMENT AS NOTED
- SET 3/4" IRON ROD,  
WITH CAP STAMPED "L.S. 7269"

**REFERENCES**

- (R1) P.M. 11-153
- (R2) R.S. 24-125

**DILLON & MURPHY**  
 CONSULTING CIVIL ENGINEERS  
 ENGINEERING • PLANNING • SURVEYING  
 847 N. CLIFF AVENUE, SUITE A2, LODI, CALIFORNIA 95240 (208) 334-8813

1694