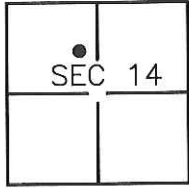


CORNER RECORD

Document Number CR-17-24
County of SAN JOAQUIN, California

City of STOCKTON

Brief Legal Description MONUMENT AT THE PROJECTED LOT LINE BETWEEN LOTS 104 & 105 OF
NORMANDY VILLAGE UNIT NO. 2. LOCATED IN SECTION 14, T.2N, R.6E, M.D.B.&M.



T.2N, R.6E

CORNER TYPE

Government Corner Control
Meander Property
Rancho Other

Date of Survey 11-04-16

COORDINATES (Optional)

N _____
E _____
Zone _____ NAD27 NAD83
NAD83 Epoch _____
Elev. _____
Vert. Datum: NVGD29 NVGD88
Meas. Units: Metric Imperial

Corner— Left as found Found and tagged Established Reestablished Rebuilt

Identification and type of corner found: Evidence used to identify or procedure used to establish or reestablish the corner:

SET CONCRETE NAIL WITH BRASS TAG STAMPED LS 6953 AT THE PROJECTED LOT LINE BETWEEN LOTS
104 & 105 OF NORMANDY VILLAGE UNIT NO. 2. FOUND WITNESS CORNERS AS SHOWN ON CORNER
RECORD FILED AS DOCUMENT NUMBER CR-16-225.

A description of the physical condition of the monument as found and as set or reset: _____

SET CONCRETE NAIL WITH BRASS TAG STAMPED LS 6953 AT THE PROJECTED LOT LINE BETWEEN LOTS
104 & 105 OF NORMANDY VILLAGE UNIT NO. 2 FROM TIES AS SHOWN ON PAGE 2.

SURVEYOR'S STATEMENT

This Corner Record was prepared by me or under my direction in conformance with
the Land Surveyors' Act on DECEMBER 7, 2016,

Signed [Signature] P.L.S. or R.C.E. Number 6953



COUNTY SURVEYOR'S STATEMENT

This Corner Record was received December 12, 2016 and examined
and filed January 10, 2017

Signed [Signature] P.L.S. or R.C.E. No: 4842

Title County Surveyor



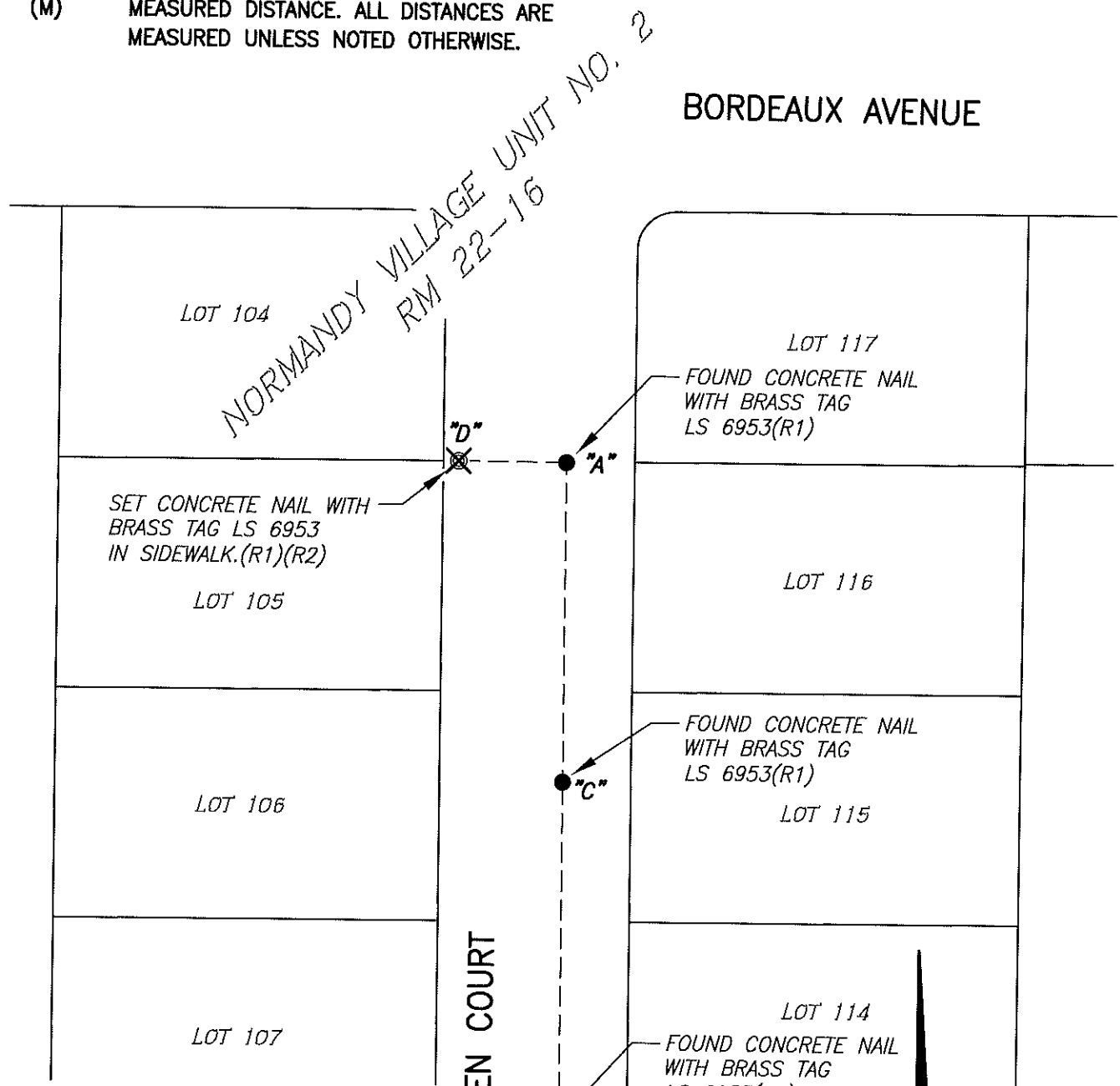
County Surveyor's Comment _____

LEGEND:

- ⊗ SET MONUMENT AS NOTED
- FOUND MONUMENT AS NOTED.
- C.R. DENOTES CORNER RECORD
- R.M. DENOTES RECORD MAP
- (M) MEASURED DISTANCE. ALL DISTANCES ARE MEASURED UNLESS NOTED OTHERWISE.

REFERENCE:

- (R1) C.R. 16-225, S.J.C.R.
- (R2) R.M. 22-16, S.J.C.R.



χ AND DISTANCE TABLE

BS-@-FS	χ	FS DISTANCE
B-A-B	00°00'00"	172.58'(M)
B-A-C	00°00'00"	83.44'(M)
B-A-D	90°25'23"	28.13'(M)



NOT TO SCALE