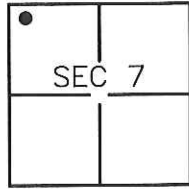


CORNER RECORD

Document Number CR-17-22
County of SAN JOAQUIN, California

City of STOCKTON

Brief Legal Description MONUMENT AT THE PROJECTED LOT LINE BETWEEN LOTS 478 & 479 OF STONEWOOD ESTATES UNIT NO.II. LOCATED IN SECTION 7, T.2N, R.6E, M.D.B.&M.



T.2N, R.6E

CORNER TYPE

Government Corner Control
 Meander Property
 Rancho Other

Date of Survey 11-04-16

COORDINATES (Optional)

N _____
 E _____
 Zone _____ NAD27 NAD83
 NAD83 Epoch _____
 Elev. _____
 Vert. Datum: NVGD29 NVGD88
 Meas. Units: Metric Imperial

Corner— Left as found Found and tagged Established Reestablished Rebuilt

Identification and type of corner found: Evidence used to identify or procedure used to establish or reestablish the corner:
SET CONCRETE NAIL WITH BRASS TAG STAMPED LS 6953 AT THE PROJECTED LOT LINE BETWEEN LOTS 478 & 479 OF STONEWOOD ESTATES UNIT NO.II. FOUND WITNESS CORNERS AS SHOWN ON CORNER RECORD FILED AS DOCUMENT NUMBER CR-16-235.

A description of the physical condition of the monument as found and as set or reset:
SET CONCRETE NAIL WITH BRASS TAG STAMPED LS 6953 AT THE PROJECTED LOT LINE BETWEEN LOTS 478 & 479 OF STONEWOOD ESTATES UNIT NO.II FROM TIES AS SHOWN ON PAGE 2.

SURVEYOR'S STATEMENT

This Corner Record was prepared by me or under my direction in conformance with the Land Surveyors' Act on DECEMBER 7, 2016,

Signed [Signature] P.L.S. or R.C.E. Number 6953



COUNTY SURVEYOR'S STATEMENT

This Corner Record was received December 12, 2016 and examined and filed January 10, 2017

Signed [Signature] P.L.S. or R.C.E. No: 4842

Title County Surveyor

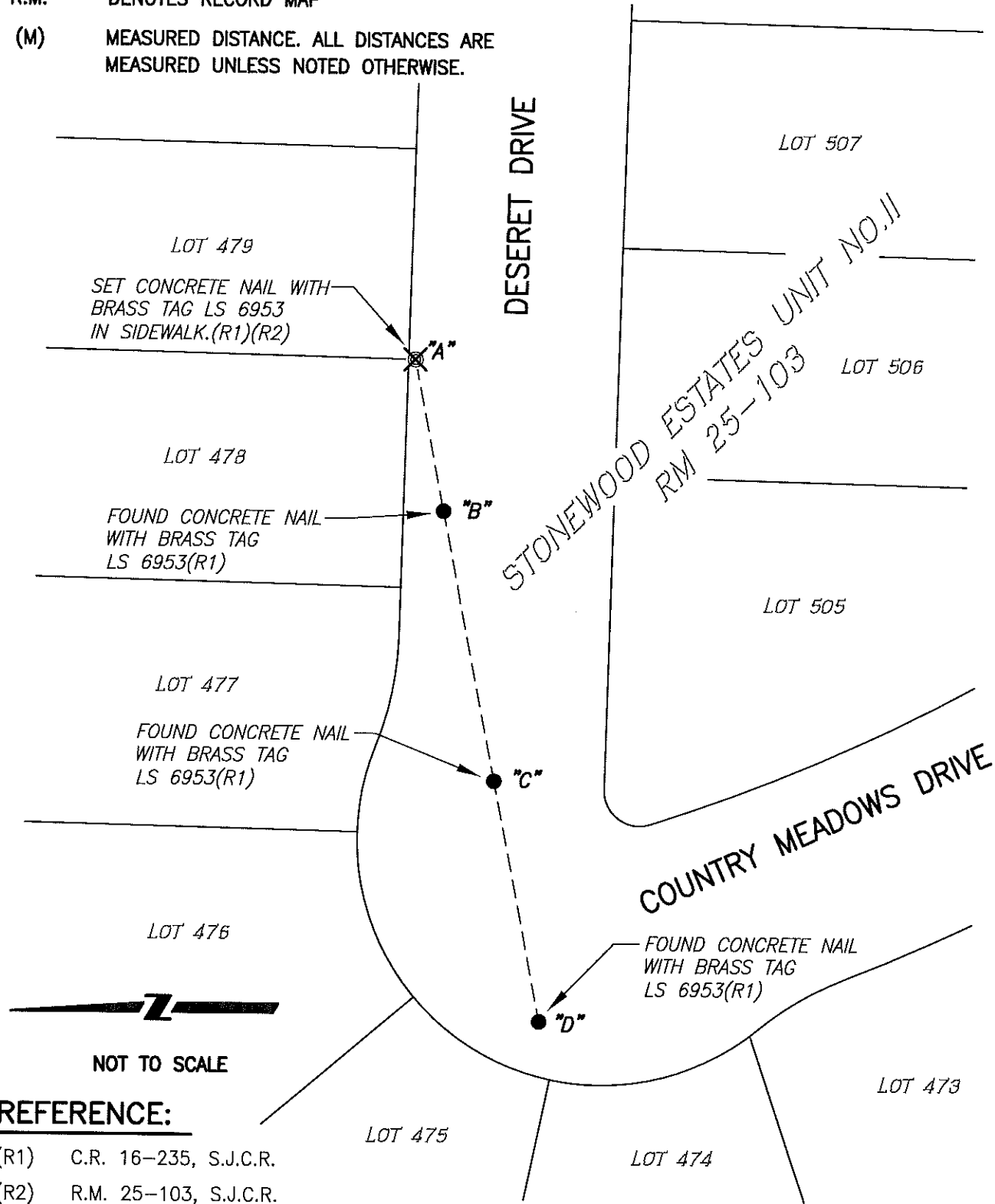
County Surveyor's Comment _____



LEGEND:

- ⊗ SET MONUMENT AS NOTED
- FOUND MONUMENT AS NOTED.
- C.R. DENOTES CORNER RECORD
- R.M. DENOTES RECORD MAP
- (M) MEASURED DISTANCE. ALL DISTANCES ARE MEASURED UNLESS NOTED OTHERWISE.

X AND DISTANCE TABLE		
BS-@-FS	X	FS DISTANCE
D-A-D	00°00'00"	191.97'(R1)
D-A-B	00°00'00"	43.96'(R1)
D-A-C	00°00'00"	122.31'(R1)



REFERENCE:

- (R1) C.R. 16-235, S.J.C.R.
- (R2) R.M. 25-103, S.J.C.R.