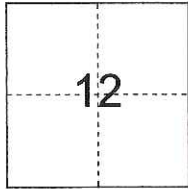


**CORNER RECORD**

City of Lodi

Document Number CR-17-02  
County of San Joaquin, California

Brief Legal Description Cherokee Lane and Harold Street,  
within Northeast Quarter of Section 12, T3N, R6E



**CORNER TYPE**

Government Corner  Control   
Meander  Property   
Rancho  Other

Date of Survey Nov. 1, 2016

**COORDINATES (Optional)**

N. \_\_\_\_\_  
E. \_\_\_\_\_  
Zone \_\_\_\_\_ NAD27  NAD83   
NAD83 Epoch \_\_\_\_\_  
Elev. \_\_\_\_\_  
Vert. Datum: NGVD29  NAVD88   
Meas. Units: Metric  Imperial

Corner - Left as found  Found and tagged  Established  Reestablished  Rebuilt

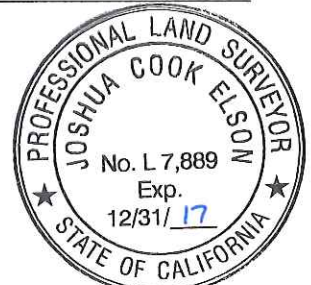
Identification and type of corner found: Evidence used to identify or procedure used to establish or reestablish the corner:  
See sketch on backside.

A description of the physical condition of the monument as found and as set or reset:  
See sketch on backside.

**SURVEYOR'S STATEMENT**

This Corner Record was prepared by me or under my direction in conformance with  
the Land Surveyors' Act on Nov. 16, 2016

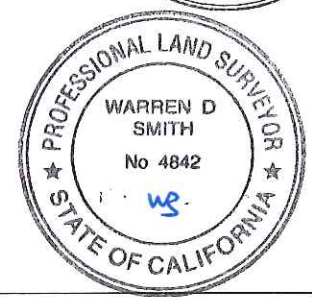
Signed [Signature] L.S. or R.C.E. Number 7889



**COUNTY SURVEYOR'S STATEMENT**

This Corner Record was received December 1, 2016, and examined  
and filed January 10, 2017

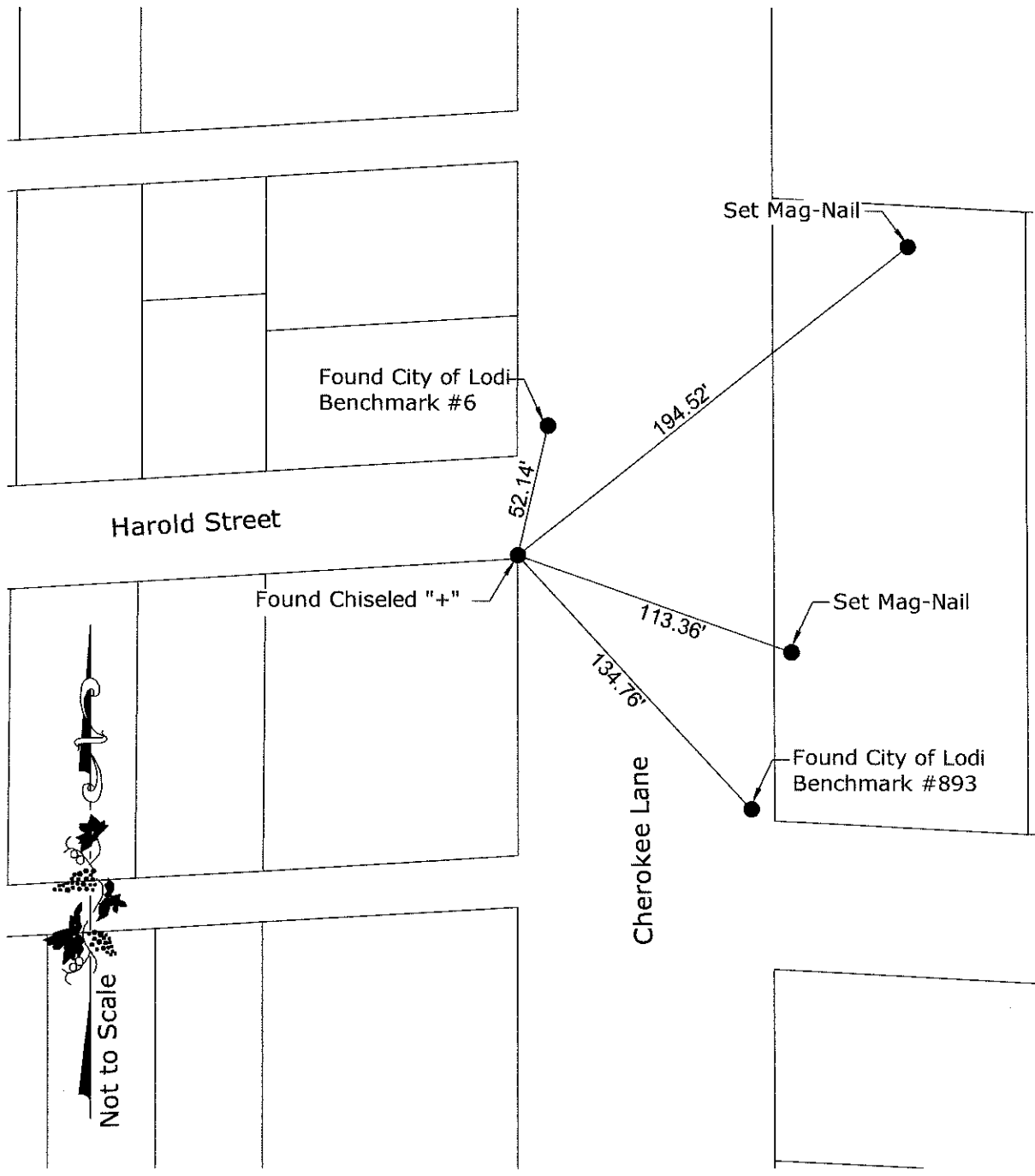
Signed Warren D. Smith P.L.S. No. 4842  
Title County Surveyor



County Surveyor's Comment \_\_\_\_\_

(D.D. Sheet No. 16 )

S:\Projects\2016\10064\10064.dwg 06/16/16 9:27am-10:50m-2007E: 19000\_BD.dwg 001 Central Network and BP Level.dwg 001 Shape File.dwg 001\_BP.dwg



Not to Scale

Notes:

- 1. Monuments are not tagged unless noted.
- 2. No attempt was made to verify the monument(s)



PREPARED IN THE OFFICE OF:

**BAUMBACH & PIAZZA, INC.**

CIVIL ENGINEERS • SURVEYORS

www.bpengineers.net

209.368.6618

323 W. Elm St.

Lodi, CA 95240