



Construction Status Update

Dear Resident:

Lower Sacramento Road will be closed on Saturday, September 24, 2016, between Eight Mile Road and Mettler Road, from approximately 4:00 AM to 6:00 PM to reconstruct a portion of the roadway as part of the Lower Sacramento Road Improvements (Project). Traffic will be diverted around the Project; however, local traffic (residents and emergency responders) will be permitted access through construction operations at all times, with minor delays and minimal restrictions to driveways. Your cooperation and patience will help us complete the Project in a timely and effective manner.



Please see enclosed map for suggested alternate driving routes. Should you need any assistance or have any questions regarding this Project, please contact the San Joaquin County Department of Public Works' Field Engineering Division at the contact information below.

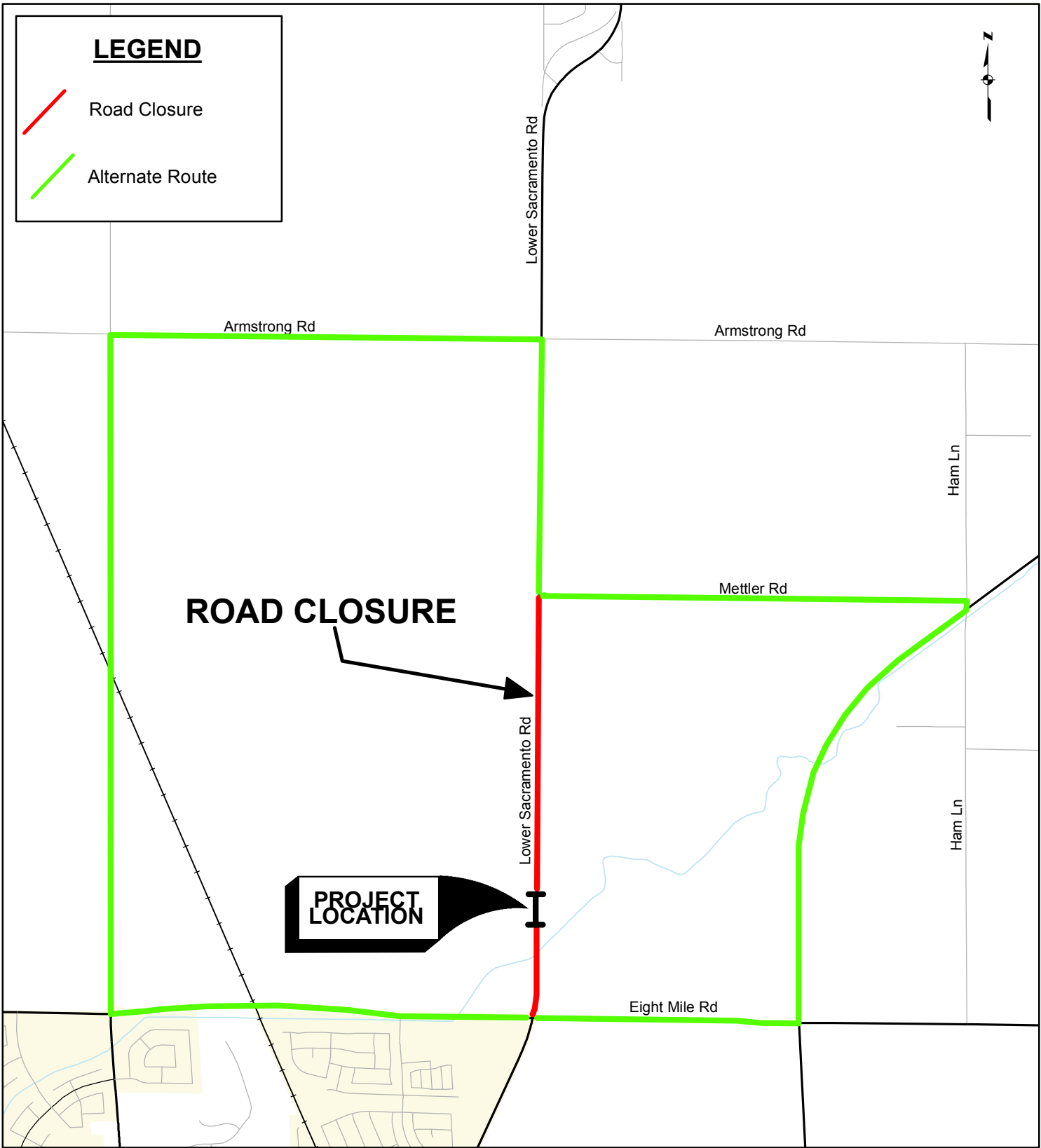
Awni Taha
Acting Construction Manager
Office: (209) 953-7619
Mobile:(209) 938-8470
Email: ataha@sjgov.org

Thienan Nguyentan
Resident Engineer
Office: (209) 953-7422
Email: tnguyentan@sjgov.org



LEGEND

-  Road Closure
-  Alternate Route

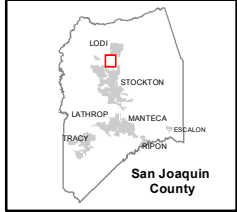


ROAD CLOSURE

PROJECT LOCATION

September 2016

1" = 2,090.1'



**Lower Sacramento Road Improvements
-- Alternate Route Map --**

SAN JOAQUIN COUNTY
Department of Public Works, 1810 E. Hazelton Ave., Stockton, CA 95205
The County of San Joaquin does not warrant the accuracy, completeness, or suitability for any particular purpose.
The Information on this map is not intended to replace engineering, financial or primary records research.

