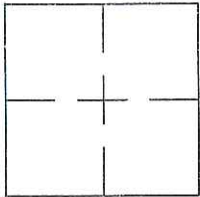


CORNER RECORD

Document Number CR-14-222
City of LATHROP County of SAN JOAQUIN, California

Brief Legal Description WELL MONUMENT LOCATED WITHIN THE CUL-DE-SAC OF CEDAR RIDGE CT.



CORNER RECORD

COORDINATES
(Optional)

Government Corner Control
Meander Property
Rancho Other
Date of Survey 8/23/14

N. _____
E. _____
Zone _____ Datum _____
Elev. _____

Corner — Left as found Found and tagged Established Reestablished Rebuilt

Identification and type of corner found: Evidence used to identify or procedure used to establish of reestablish the corner:
FOUND 1" IRON PIPE WITH CAP & TAG IN WELL MONUMENT.

THIS POINT WAS REFERENCED PRIOR TO A CONSTRUCTION PROJECT IN THE VICINITY.
PROJECT IN THE VICINITY

A description of the physical condition of the monument as found and as set or reset: _____
FOUND AND SET POINTS AS SHOWN ON PAGE 2.

THESE TIES ARE FOR THE PURPOSE OF PERPETUATING THE FOUND MONUMENTATION.
NO CLAIM IS MADE AS TO THE RELATIONSHIP OF THE POINTS OR LINES SHOWN HEREON
TO TRUE BOUNDARY LOCATIONS.

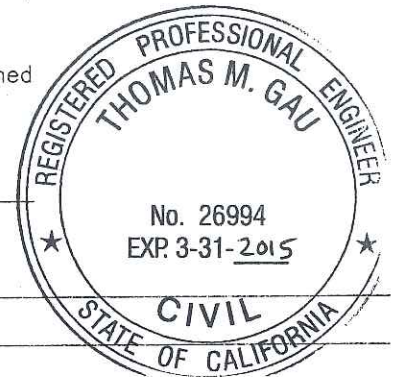
SURVEYOR'S STATEMENT

This Corner Record was prepared by me or under my direction in conformance with
the Land Surveyors' Act on August 25, 2014.
Signed [Signature] L.S. Number LS 4520
VINCENT H. CUNHA



COUNTY SURVEYOR'S STATEMENT

This Corner Record was received August 27 2014 and examined
and filed October 6 2014.
Signed [Signature] Title County Surveyor



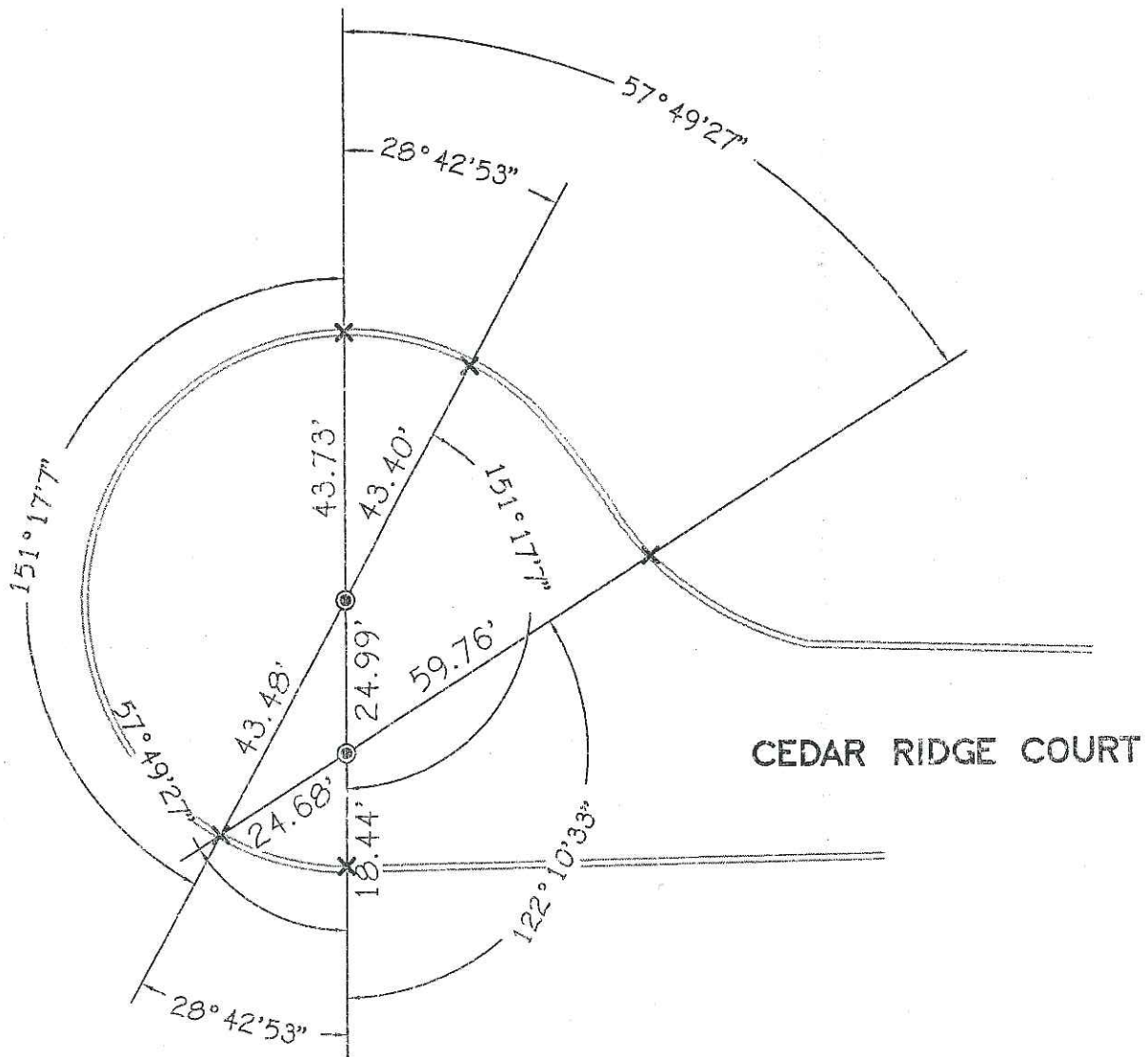
County Surveyor's Comment _____



SCALE: 1"=30'

LEGEND

- FOUND 1" IRON PIPE WITH CAP & TAG IN WELL MONUMENT.
- ✕ SET CUT CROSS IN CURB



CEDAR RIDGE COURT