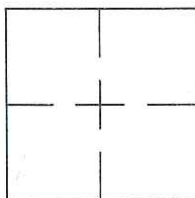


CORNER RECORD

Document Number CR-14-218

City of LATHROP County of SAN JOAQUIN, California

Brief Legal Description WELL MONUMENT LOCATED WITHIN THE CUL-DE-SAC OF HOLLYHOCK CT.



CORNER RECORD

Government Corner  Control   
Meander  Property   
Rancho  Other   
Date of Survey 8/23/14

COORDINATES  
(Optional)

N. \_\_\_\_\_  
E. \_\_\_\_\_  
Zone \_\_\_\_\_ Datum \_\_\_\_\_  
Elev. \_\_\_\_\_

Corner — Left as found  Found and tagged  Established  Reestablished  Rebuilt

Identification and type of corner found: Evidence used to identify or procedure used to establish or reestablish the corner:  
FOUND 5/8" REBAR & CAP WITH TACK IN WELL MONUMENT.

THIS POINT WAS REFERENCED PRIOR TO A CONSTRUCTION PROJECT IN THE VICINITY.  
PROJECT IN THE VICINITY

A description of the physical condition of the monument as found and as set or reset: \_\_\_\_\_  
FOUND AND SET POINTS AS SHOWN ON PAGE 2.

THESE TIES ARE FOR THE PURPOSE OF PERPETUATING THE FOUND MONUMENTATION.

NO CLAIM IS MADE AS TO THE RELATIONSHIP OF THE POINTS OR LINES SHOWN HEREON  
TO TRUE BOUNDARY LOCATIONS.

SURVEYOR'S STATEMENT

This Corner Record was prepared by me or under my direction in conformance with  
the Land Surveyors' Act on August 25, 20 14.

Signed Vincent H. Cunha L.S. Number LS 4520  
VINCENT H. CUNHA

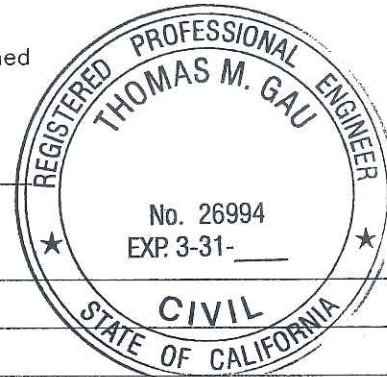


COUNTY SURVEYOR'S STATEMENT

This Corner Record was received August 27 20 14 and examined  
and filed October 6 20 14.

Signed Thomas M. Gau Title County Surveyor

County Surveyor's Comment \_\_\_\_\_

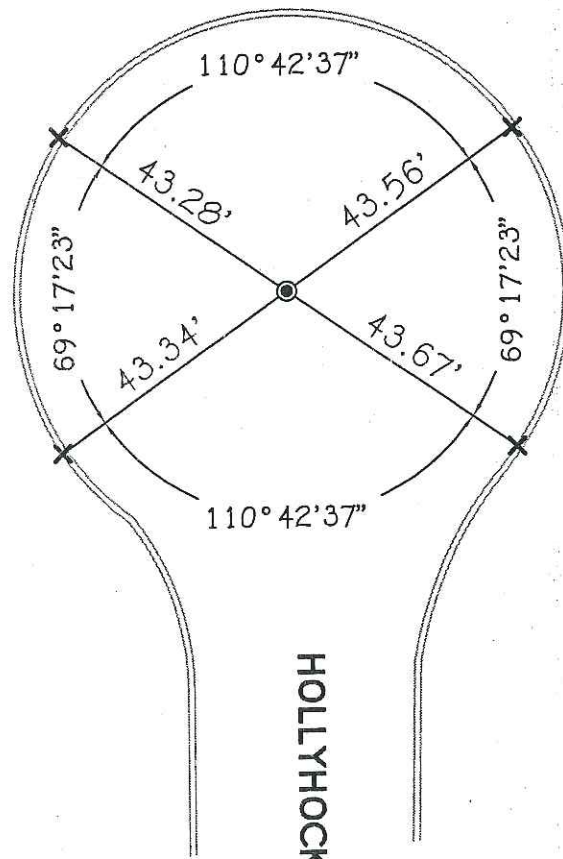




SCALE: 1"=30'

### LEGEND

- FOUND REBAR & CAP WITH TACK IN MONUMENT WELL
- ✕ SET CUT CROSS IN CURB



HOLLYHOCK COURT