

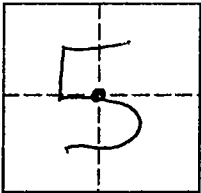
# CORNER RECORD

Document Number 06-12

City of —

County of SAN JOAQUIN, California

Brief Legal Description CENTER 1/4 CORNER OF SECTION 5 OF T3N, R7E OF MDB 1/4 M



### CORNER TYPE

Government Corner  Control   
 Meander  Property   
 Rancho  Other

Date of Survey Oct. 25, 2005

### COORDINATES(Optional)

N. \_\_\_\_\_  
 E. \_\_\_\_\_  
 Zone \_\_\_\_\_ NAD27  NAD83   
 NAD83 Epoch \_\_\_\_\_  
 Elevation \_\_\_\_\_  
 Vert. Datum: NGVD29  NAV88   
 Meas. Units: Metric  Imperial

Corner - Left as found  Found and tagged  Established  Reestablished  Rebuilt

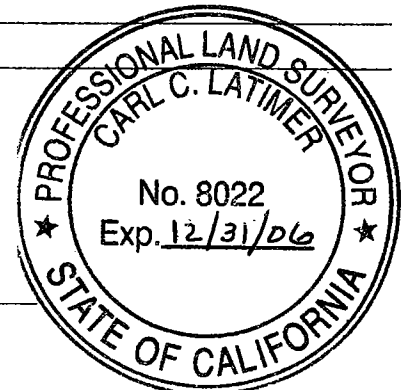
Identification and type of corner found: Evidence used to identify or procedure used to establish or reestablish the corner:  
FOUND RAILROAD SPIKE IN AC, DOWN 0.1' BELOW AC SURFACE.

A description of the physical condition of the monument as found and as set or reset:  
MONUMENT WAS FOUND IN GOOD CONDITION

### SURVEYOR'S STATEMENT

This Corner Record was prepared by me or under my direction in conformance with the Land Surveyor's Act on MAY 25, 2006.

Signed [Signature] P.L.S. or R.C.E. Number 8022  
 For the State of California  
 Department of Transportation



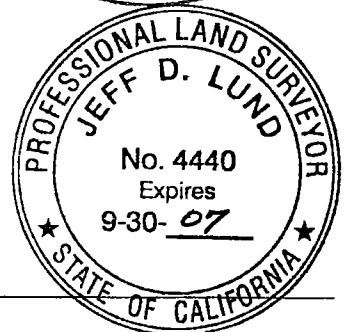
### COUNTY SURVEYOR'S STATEMENT

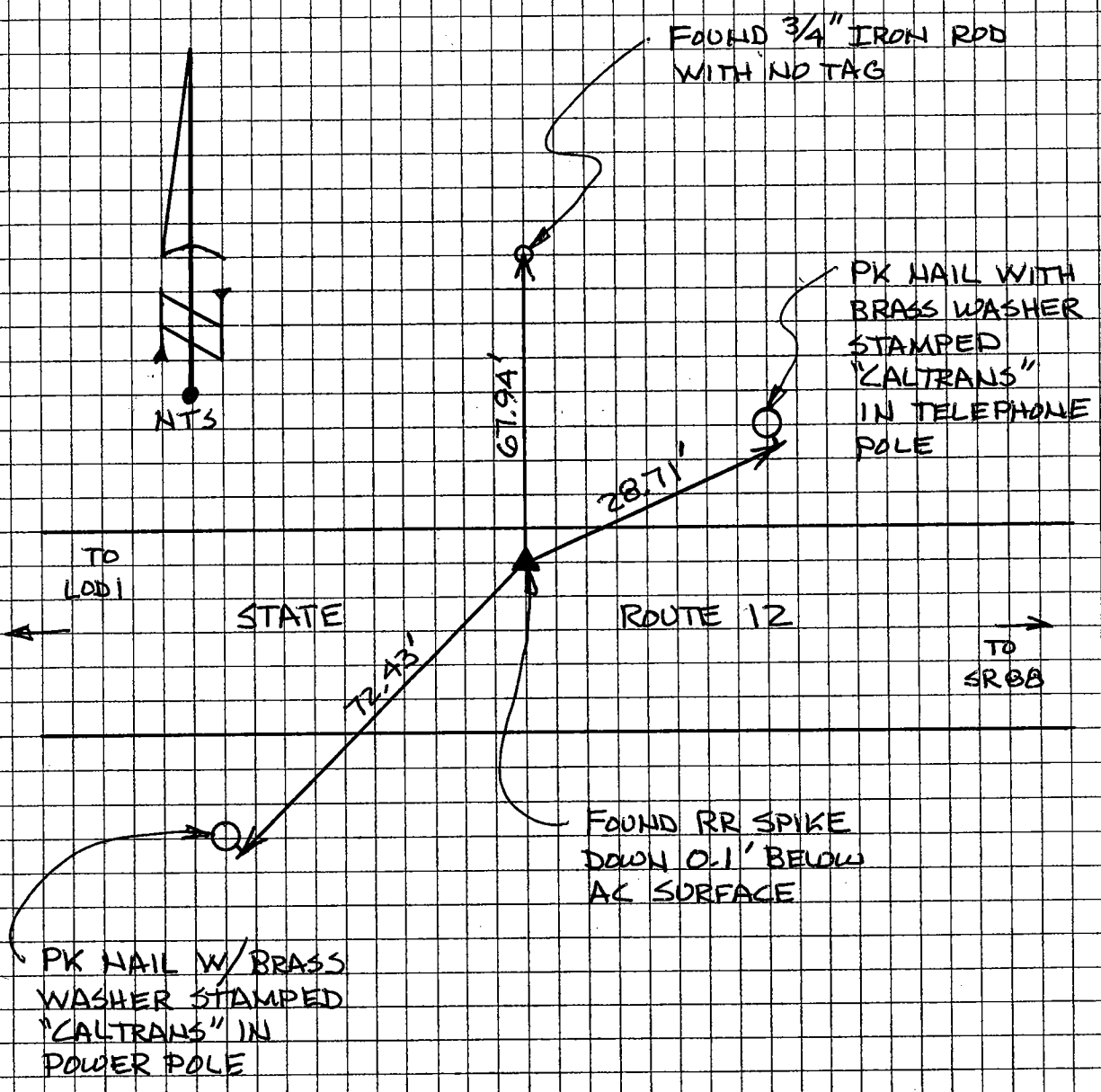
This Corner Record was received MAY 30, 2006 and examined and filed JUNE 9, 2006.

Signed [Signature] P.L.S. or R.C.E. Number 4440

Title ASSISTANT COUNTY SURVEYOR

County Surveyor's Comment \_\_\_\_\_





THE TIES SHOWN HEREON ARE FOR THE PURPOSE OF PERPETUATING THE MONUMENTATION CURRENTLY EXISTING. NO ATTEMPT WAS MADE TO DETERMINE THE VALIDITY OF THE MONUMENT OR IT'S PROPER LOCATION IN RELATION TO LEGAL BOUNDARY LINES IN THE AREA.