

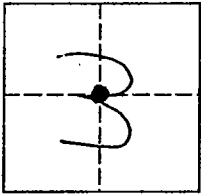
CORNER RECORD

Document Number 06-11

City of -

County of SAN JOAQUIN, California

Brief Legal Description CENTER 1/4 CORNER OF SECTION 3 OF T3N, R7E OF MDB3M



CORNER TYPE

COORDINATES(Optional)

Government Corner Control
Meander Property
Rancho Other

N. _____
E. _____
Zone _____ NAD27 NAD83
NAD83 Epoch _____
Elevation _____
Vert. Datum: NGVD29 NAV88
Meas. Units: Metric Imperial

Date of Survey Oct. 25, 2005

Corner - Left as found Found and tagged Established Reestablished Rebuilt

Identification and type of corner found: Evidence used to identify or procedure used to establish or reestablish the corner:

FOUND 3/4" DIA, IRON ROD WITH NO TAG DOWN 0.1' BELOW
AC SURFACE.

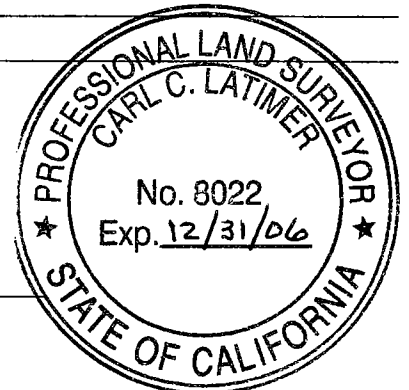
A description of the physical condition of the monument as found and as set or reset: _____

MONUMENT WAS FOUND IN GOOD CONDITION

SURVEYOR'S STATEMENT

This Corner Record was prepared by me or under my direction in conformance with the Land Surveyor's Act on MAY 25, 2006.

Signed [Signature] P.L.S. or R.C.E. Number 8022
For the State of California
Department of Transportation



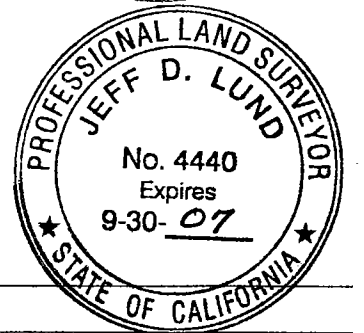
COUNTY SURVEYOR'S STATEMENT

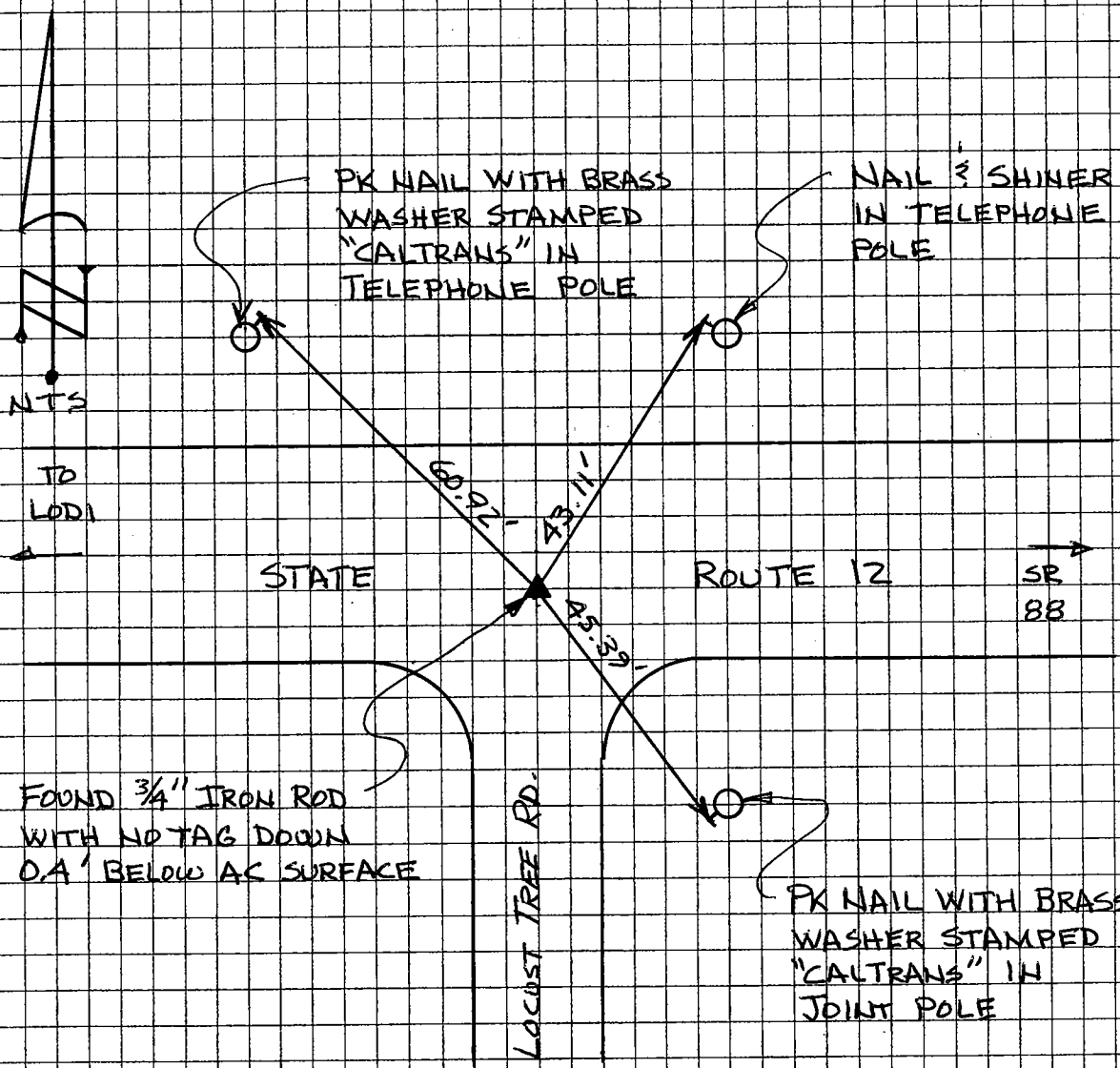
This Corner Record was received MAY 30, 2006 and examined and filed JUNE 9, 2006.

Signed [Signature] P.L.S. or R.C.E. Number 4440

Title ASSISTANT COUNTY SURVEYOR

County Surveyor's Comment _____





THE TIES SHOWN HEREON ARE FOR THE PURPOSE OF PERPETUATING THE MONUMENTATION CURRENTLY EXISTING. NO ATTEMPT WAS MADE TO DETERMINE THE VALIDITY OF THE MONUMENT OR ITS PROPER LOCATION IN RELATION TO LEGAL BOUNDARY LINES IN THE AREA.