

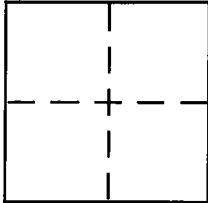
**CORNER RECORD**

Document Number 06-07

City of TRACY

County of SAN JOAQUIN, California

Brief Legal Description CITY OF TRACY STREET MONUMENT 119.22' NW OF THE INTERSECTION OF VALERIE LANE AND LINCOLN BLVD.



**CORNER TYPE**

Government Corner  Control   
Meander  Property   
Rancho  Other   
Date of Survey DECEMBER 11, 2001

**COORDINATES (Optional)**

N. \_\_\_\_\_  
E. \_\_\_\_\_  
Zone \_\_\_\_\_ NAD27  NAD83   
NAD83 Epoch \_\_\_\_\_  
Elev. \_\_\_\_\_  
Vert. Datum: NGVD29  NAVD88   
Meas. Units: Metric  Imperial

Corner - Left as found  Found and tagged  Established  Reestablished  Rebuilt

Identification and type of corner found: Evidence used to identify or procedure used to establish or reestablish the corner:

FOUND STREET MONUMENT AT THE INTERSECTION OF VALERIE LANE AND LINCOLN BLVD., AT THE INTERSECTION OF BONDY LANE AND LINCOLN BLVD., AND AT A POINT OF CURVE 82.81' SW OF THE INTERSECTION OF BONDY LANE AND LINCOLN BLVD., PER TRACT NO. 964, ARNOLD PARK UNIT NO. 6, 19 M & P 97, S.J.C.R.

A description of the physical condition of the monument as found and as set or reset:

ORIGINAL STREET MONUMENT DESTROYED PER CONSTRUCTION, SET STANDARD CITY MONUMENT IN MONUMENT WELL, 2-1/2" BRASS DISC STAMPED C.S. 5412.

**SURVEYOR'S STATEMENT**

This Corner Record was prepared by me or under my direction in conformance with the Land Surveyor's Act on MAY 8<sup>th</sup> 2006

Signed \_\_\_\_\_ P.L.S. or R.C.E. No. 5412



**COUNTY SURVEYOR'S STATEMENT**

This Corner Record was received MAY 11, 2006

and examined and filed MAY 16, 2006

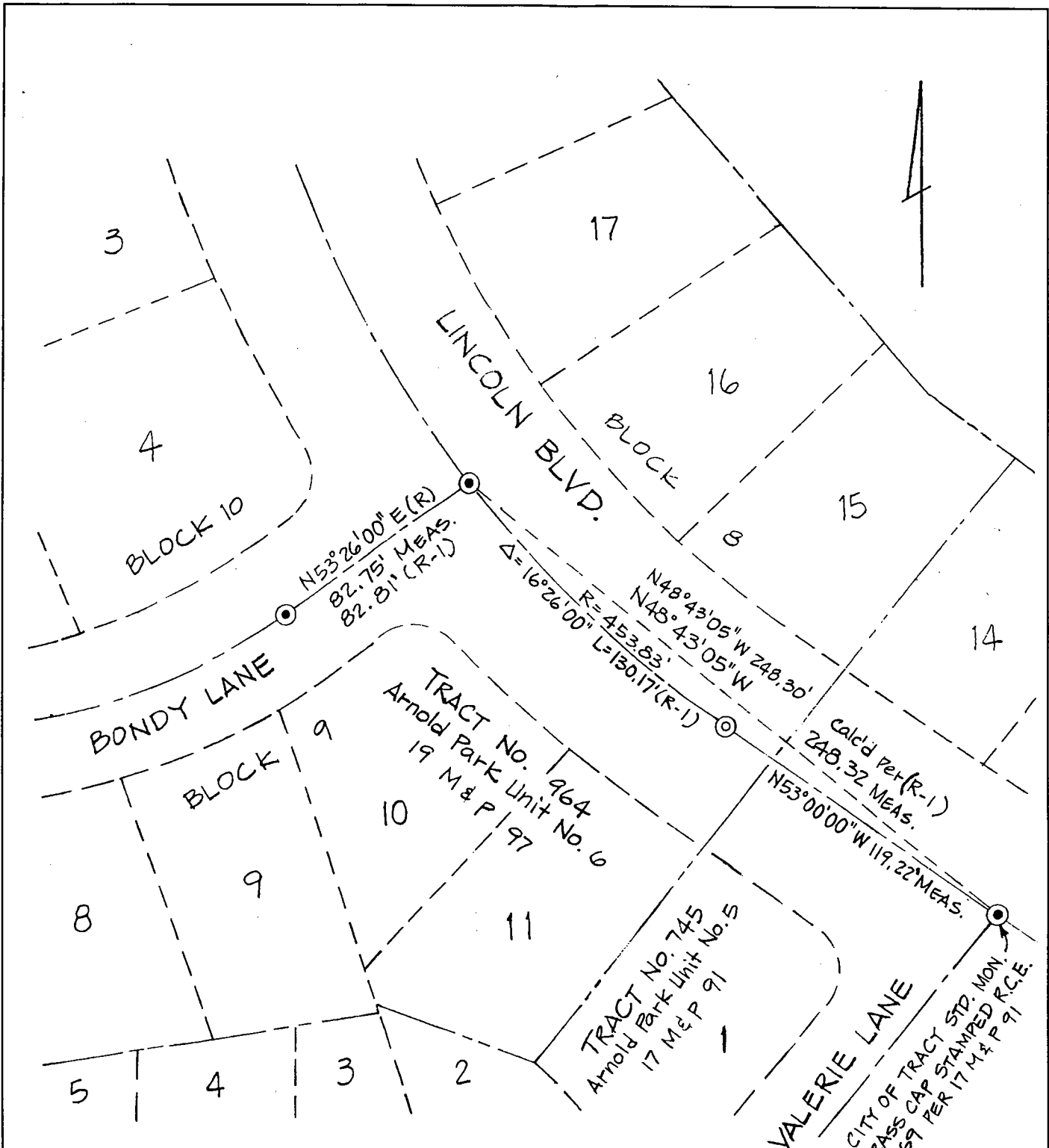
Signed Jeff D. Lund P.L.S. or R.C.E. No. 4440

Title ASSISTANT COUNTY SURVEYOR



County Surveyor's Comment THIS CORNER RECORD IS NOT IN COMPLIANCE WITH SECTION 8773.2 (b) OF THE PLS ACT REGARDING RESUBMITTAL WITHIN 60 DAYS.

(D.D. SHEET NO. 53)



**LEGEND:**

- ⊙ SET STANDARD CITY OF TRACY STREET MONUMENT IN MONUMENT WELL, 2-1/2" BRASS DISC STAMPED LS 5412
- ⊙ FOUND STANDARD CITY OF TRACY STREET MONUMENT IN MONUMENT WELL, 2-1/2" BRASS DISC STAMPED R.C.E. 16631 PER 19 M & P 97, UNLESS OTHERWISE NOTED.
- (R-1) 19 M & P 97 S.J.C.R.
- M & P MAPS AND PLATS