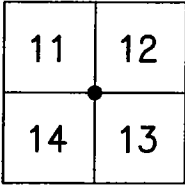


CORNER RECORD

Document Number 03-48

City of STOCKTON County of SAN JOAQUIN, California

Brief Legal Description SECTION CORNER COMMON TO SECTIONS 11, 12, 13 & 14, T.2N., R.6E., M.D.B.&M.



T.2 N., R.6 E.

CORNER TYPE

Government Corner Control
 Meander Property
 Rancho Other
 Date of Survey 2-18-03

COORDINATES (Optional)

N. _____
 E. _____
 Zone _____ NAD27 NAD83
 NAD83 Epoch _____
 Elev. _____
 Vert. Datum: NGVD29 NAVD88
 Meas. Units: Metric Imperial

Corner - Left as found Found and tagged Established Reestablished Rebuilt

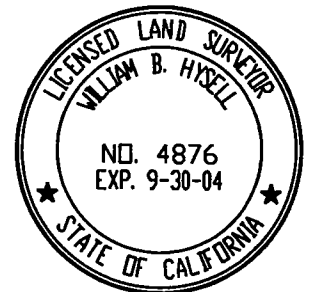
Identification and type of corner found: Evidence used to identify or procedure used to establish or reestablished the corner:
FOUND 3/4" IRON PIN TAGGED R.C.E. 8189 AT THE CORNER COMMON TO SECTIONS 11, 12, 13 AND 14
IN T.2 N., R.6 E., M.D.B.&M., AS SHOWN FOR RECORD IN BOOK 36 OF MAPS AND PLATS AT PAGE 94,
SAN JOAQUIN COUNTY RECORDS, WAS DESTROYED WITH THE CONSTRUCTION OF A MASONRY WALL.
RE-ESTABLISHED USING MONUMENTS SET PRIOR TO THE MONUMENT BEING DESTROYED, BEING FOUND
3/4" IRON PIPE TAGGED LS 4876 SET IN MONUMENT WELLS AS SHOWN ON M.&P. 36-94.

A description of the physical condition of the monument as found and as set or reset: _____
SET NAIL AND BRASS TAG STAMPED LS 4876 IN MASONRY WALL.

SURVEYOR'S STATEMENT

This Corner Record was prepared by me or under my direction in conformance with the Land Surveyors' Act on APRIL 21, 2003.

Signed William B. Hyzell L.S. 4876



COUNTY SURVEYOR'S STATEMENT

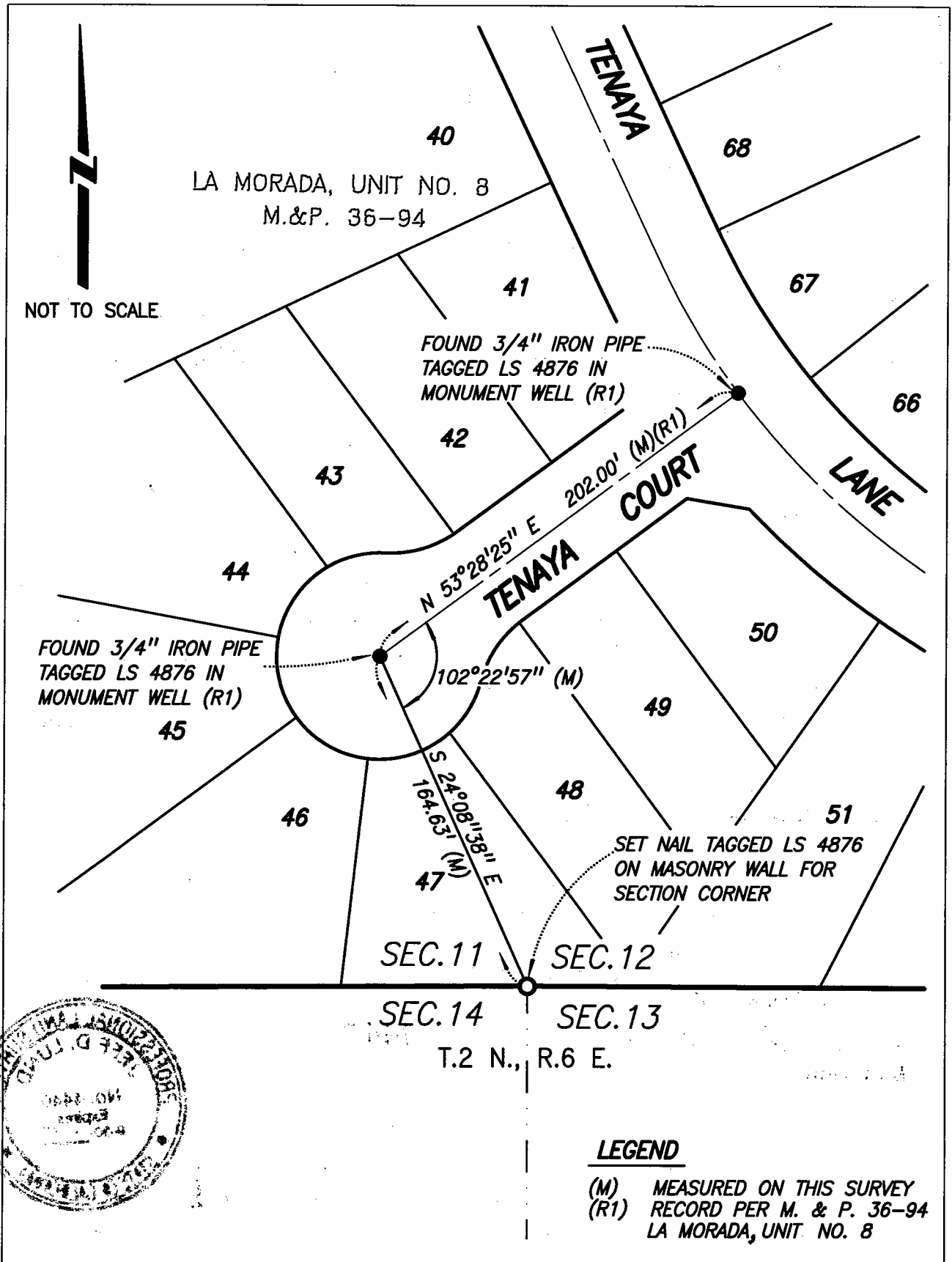
This Corner Record was received JUNE 18, 2003 and examined and filed JUNE 23, 2003.

Signed Jeff D. Lund P.L.S. No. 4440

Title ASSISTANT County Surveyor

County Surveyor's Comment _____





NOT TO SCALE

