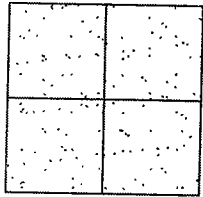


# CORNER RECORD

City of \_\_\_\_\_

Document Number 03-31  
County of San Joaquin, California

Brief Legal Description MANTHEY ROAD 220'± S/O MATHEWS ROAD



### CORNER TYPE

- Government Corner  Control
- Meander  Property
- Rancho  Other

Date of Survey January 2, 2002

### COORDINATES (Optional)

N. \_\_\_\_\_  
 E. \_\_\_\_\_  
 Zone \_\_\_\_\_ NAD27  NAD83   
 NAD83 Epoch \_\_\_\_\_  
 Elev. \_\_\_\_\_  
 Vert. Datum: NGVD29  NAVD88   
 Meas. Units: Metric  Imperial

Corner - Left as found  Found and tagged  Established  Reestablished  Rebuilt

Identification and type of corner found: Evidence used to identify or procedure used to establish or reestablish the corner:  
SEE SKETCH ON BACKSIDE.

A description of the physical condition of the monument as found and as set or reset:  
FOUND MONUMENT IN GOOD CONDITION. SEE SKETCH ON BACKSIDE.

### SURVEYOR'S STATEMENT

This Corner Record was prepared by me or under my direction in conformance with the Land Surveyors' Act on May 2, 2003.

Signed Manuel Solorio R.C.E. Number C30890

### COUNTY SURVEYOR'S STATEMENT

This Corner Record was received MAY 5, 2003 and examined and filed MAY 6, 2003.

Signed Jeff D. Lund P.L.S. No. 4440

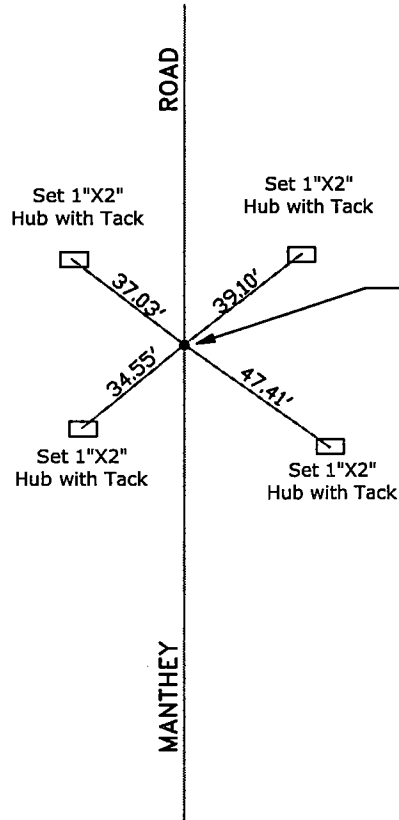
Title Assistant County Surveyor

County Surveyor's Comment \_\_\_\_\_  
THIS CORNER RECORD IS NOT IN COMPLIANCE WITH BOARD RULE 464(c)  
REGARDING SUBMITTAL WITHIN 90 DAYS FROM THE DATE OF SURVEY.





N.T.S.



Fd. Bolt and Washer Per  
Monumentation Map No. 111, Sheets 1-9,  
on File at the Dept. of Transportation  
(Survey Dept.) in Stockton, California  
(No tag)

"No Attempt Was Made to Verify the Monument(s)"

- FP=Fence Post
- GP=Guy Post
- JP=Joint Pole
- PP=Power Pole
- SP=Service Pole
- TOC=Top of Curb
- TP=Telephone Pole
- N.T.S.=Not To Scale
- Set=Conc. Nails with Brass Washers Stamped  
"S.J. Co.", unless otherwise noted