

CORNER RECORD

Document Number 03-09City of RIPON County of SAN JOAQUIN, CaliforniaBrief Legal Description SOUTHEAST CORNER OF SECTION 18, T. 2 S., R. 8 E., M.B.D. & M.,
PER MAPS AND PLATS, BOOK 36, PAGE 99, SAN JOAQUIN COUNTY RECORDS

18	17
19	20

CORNER TYPE

Government Corner Control
 Meander Property
 Rancho Other
 Date of Survey 9-23-02

COORDINATES (Optional)

N. _____
 E. _____
 Zone _____ NAD27 NAD83
 NAD83 Epoch _____
 Elev. _____
 Vert. Datum: NGVD29 NAVD88
 Meas. Units: Metric Imperial

Corner - Left as found Found and tagged Established Reestablished Rebuilt

Identification and type of corner found: Evidence used to identify or procedure used to establish or reestablished the corner:
FOUND 3" SAN JOAQUIN COUNTY BRASS CAP, NOT STAMPED, IN MONUMENT BOX .

A description of the physical condition of the monument as found and as set or reset: _____
FOUND MONUMENT IN GOOD CONDITION, SEE SKETCH ON BACK.

THE MONUMENT WILL BE DESTROYED DUE TO STREET IMPROVEMENTS FOR THE CHESAPEAKE PROJECT.

SURVEYOR'S STATEMENT

This Corner Record was prepared by me or under my direction in conformance with the Land Surveyors' Act on NOVEMBER 25, 2002.

Signed [Signature] L.S. Number 6953

**COUNTY SURVEYOR'S STATEMENT**

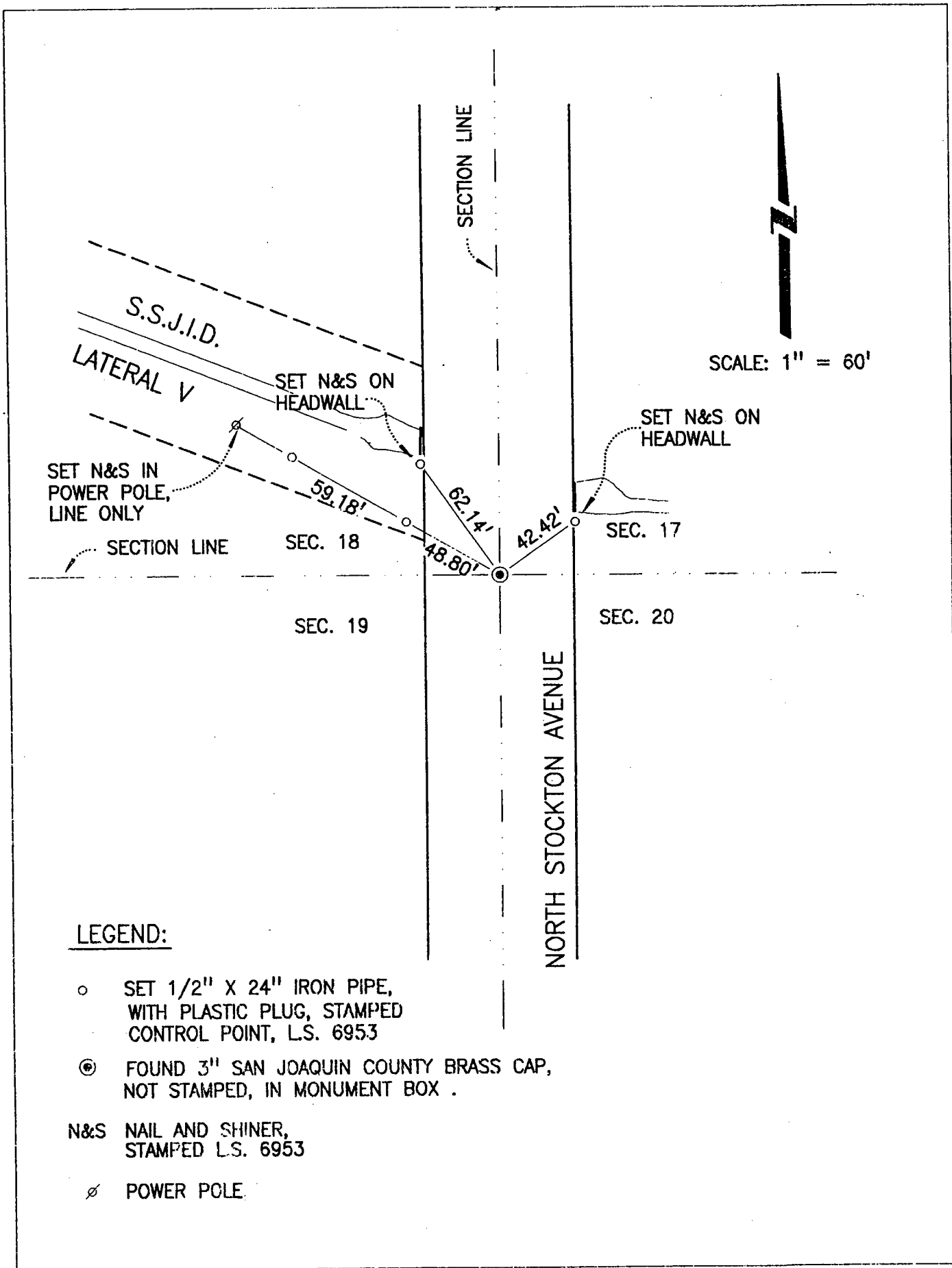
This Corner Record was received February 12, 200~~2~~³ and examined and filed February 14, 2003.

Signed [Signature] P.L.S. No. 4440

Title Assistant County Surveyor



County Surveyors' Comment _____



SCALE: 1" = 60'

LEGEND:

- SET 1/2" X 24" IRON PIPE, WITH PLASTIC PLUG, STAMPED CONTROL POINT, L.S. 6953
- ⊙ FOUND 3" SAN JOAQUIN COUNTY BRASS CAP, NOT STAMPED, IN MONUMENT BOX .
- N&S NAIL AND SHINER, STAMPED L.S. 6953
- ⊘ POWER POLE.