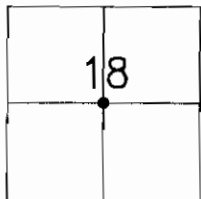


CORNER RECORD

Document Number 03-08

City of RIPON County of SAN JOAQUIN, California

Brief Legal Description CENTER OF SECTION 18, T. 2 S., R. 8 E. M.B.D. & M.,
PER P.M. 9-56



CORNER TYPE

Government Corner Control
 Meander Property
 Rancho Other
 Date of Survey 9-23-02

COORDINATES (Optional)

N. _____
 E. _____
 Zone _____ NAD27 NAD83
 NAD83 Epoch _____
 Elev. _____
 Vert. Datum: NGVD29 NAVD88
 Meas. Units: Metric Imperial

Corner - Left as found Found and tagged Established Reestablished Rebuilt

Identification and type of corner found: Evidence used to identify or procedure used to establish or reestablished the corner:
FOUND 3/4" IRON PIPE, NOT TAGGED. PIPE IS IDENTIFIED AS CENTER OF SECTION 18.

THE PIPE WAS SET ON P.M. 9-56, AND ACCEPTED ON P.M. 17-38, P.M. 17-119, R.S. 29-89,
R.S. 29-139, R.S. 32-163 AND M. & P. 37-45.

A description of the physical condition of the monument as found and as set or reset:
FOUND MONUMENT IN GOOD CONDITION, SEE SKETCH ON BACK.

THE MONUMENT WILL BE DESTROYED DUE TO STREET IMPROVEMENTS FOR THE CHESAPEAKE PROJECT.

SURVEYOR'S STATEMENT

This Corner Record was prepared by me or under my direction in conformance with the Land Surveyors' Act on NOVEMBER 25, 2002.

Signed [Signature] L.S. Number 6953



COUNTY SURVEYOR'S STATEMENT

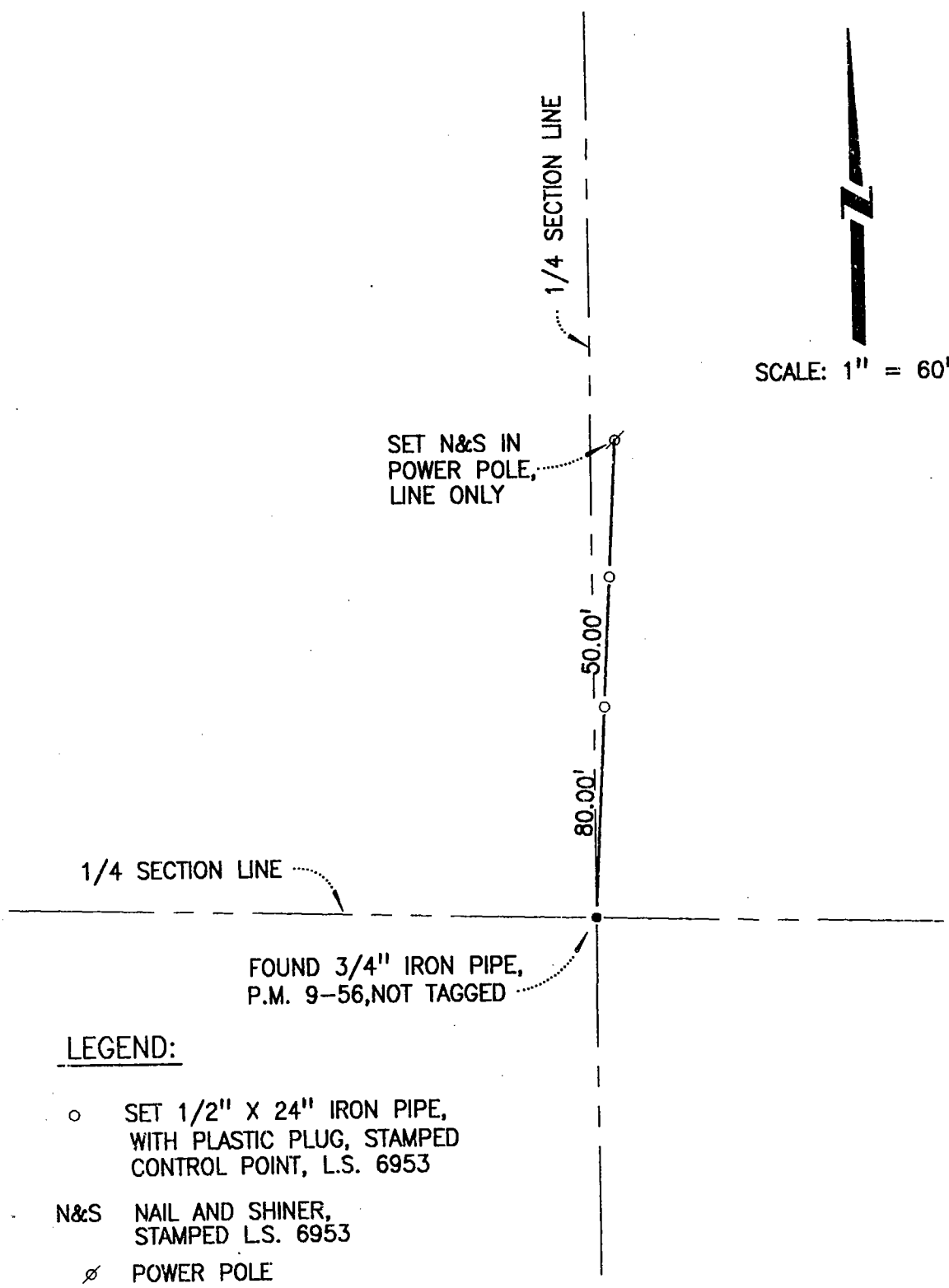
This Corner Record was received February 12, 200~~2~~³ and examined and filed February 14, 2003.

Signed [Signature] P.L.S. No. 4440

Title Assistant County Surveyor



County Surveyors Comment _____



SCALE: 1" = 60'

SET N&S IN
POWER POLE,
LINE ONLY

1/4 SECTION LINE

1/4 SECTION LINE

FOUND 3/4" IRON PIPE,
P.M. 9-56, NOT TAGGED

LEGEND:

- o SET 1/2" X 24" IRON PIPE,
WITH PLASTIC PLUG, STAMPED
CONTROL POINT, L.S. 6953
- N&S NAIL AND SHINER,
STAMPED L.S. 6953
- ∅ POWER POLE