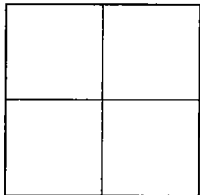


CORNER RECORD

City of Lodi

Document Number 02-60  
County of San Joaquin, California

Brief Legal Description Lower Sacramento Road at Elm Street



CORNER TYPE

Government Corner  Control   
Meander  Property   
Rancho  Other

Date of Survey 8/8/99

COORDINATES (Optional)

N. \_\_\_\_\_  
E. \_\_\_\_\_  
Zone \_\_\_\_\_ NAD27  NAD83   
NAD83 Epoch \_\_\_\_\_  
Elev. \_\_\_\_\_  
Vert. Datum: NGVD29  NAVD88   
Meas. Units: Metric  Imperial

Corner - Left as found  Found and tagged  Established  Reestablished  Rebuilt

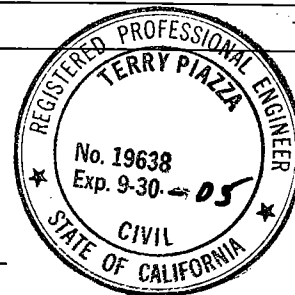
Identification and type of corner found: Evidence used to identify or procedure used to establish or reestablish the corner:  
Found 3/4 inch iron rod in monument box per Maps and Plats 20-20 (untagged) at the intersection of Lower Sacramento Road and Elm Street.

A description of the physical condition of the monument as found and as set or reset: The monument is in good condition. Reference points were set in case monument is disturbed.

SURVEYOR'S STATEMENT

This Corner Record was prepared by me or under my direction in conformance with the Land Surveyors' Act on November 15, 2002.

Signed [Signature] L.S. or R.C.E. Number 19638



COUNTY SURVEYOR'S STATEMENT

This Corner Record was received DECEMBER 27, 2002 and examined and filed JANUARY 3, 2003.

Signed [Signature] P.L.S. No. 4440

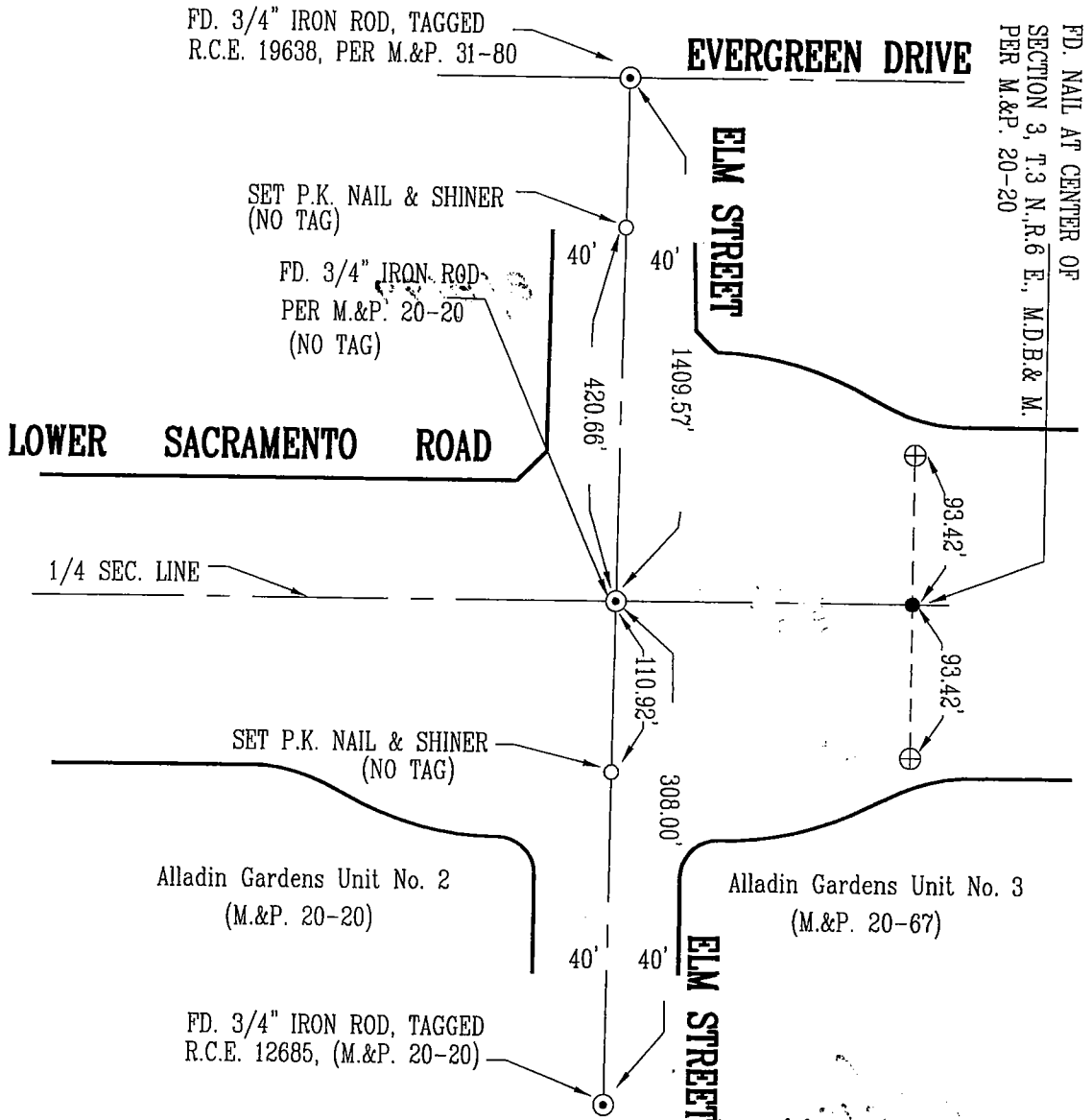
Title Assistant County Surveyor



County Surveyor's Comment This corner record is not in compliance with Board Rule 464(c) regarding submittal within 90 days from the date of survey.

(D.D. Sheet No. 15-A)

FD. NAIL AT CENTER OF  
SECTION 3, T.3 N., R.6 E., M.D.B. & M.  
PER M.&P. 20-20



**LEGEND**

- SET MONUMENT AS NOTED
  - ⊕ SET CHISELLED CROSS IN CURB
  - FD. MONUMENT AS NOTED
  - ⊙ FD. MONUMENT AS NOTED, IN MONUMENT BOX
  - SEC. SECTION
  - FD. FOUND
  - M.&P. BOOK OF MAPS AND PLATS
- ALL REFERENCES ARE TO SAN JOAQUIN COUNTY RECORDS AND BOOK OR VOLUME PRECEDES PAGE.



NOT TO SCALE

**NOTE:**  
THE TIES SHOWN HEREON ARE FOR THE PURPOSE OF PERPETUATING THE MONUMENTATION CURRENTLY EXISTING. NO ATTEMPT WAS MADE TO DETERMINE THE VALIDITY OF THE MONUMENTS OR THEIR PROPER LOCATION IN RELATION TO LEGAL BOUNDARY LINES IN THE AREA.