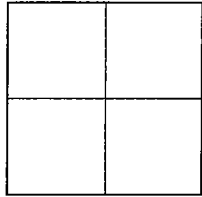


CORNER RECORD

Document Number 02-59
County of San Joaquin, California

City of Lodi

Brief Legal Description Lower Sacramento Road at Park West Drive



CORNER TYPE

Government Corner Control
Meander Property
Rancho Other

Date of Survey 8/8/99

COORDINATES (Optional)

N. _____
E. _____
Zone _____ NAD27 NAD83
NAD83 Epoch _____
Elev. _____
Vert. Datum: NGVD29 NAVD88
Meas. Units: Metric Imperial

Corner - Left as found Found and tagged Established Reestablished Rebuilt

Identification and type of corner found: Evidence used to identify or procedure used to establish or reestablish the corner:
Found 3/4 inch iron rod, tagged RCE 12685, in monument box per Maps and Plats 27-79 at the intersection of Lower Sacramento Road and Park West Drive.

A description of the physical condition of the monument as found and as set or reset: The monument is in good condition. Reference point was set in case monument is disturbed.

SURVEYOR'S STATEMENT

This Corner Record was prepared by me or under my direction in conformance with the Land Surveyors' Act on November 15, 2002.

Signed Terry Piazza L.S. or R.C.E. Number 19638



COUNTY SURVEYOR'S STATEMENT

This Corner Record was received DECEMBER 27, 2002 and examined and filed JANUARY 3, 2003.

Signed Jeff Lund P.L.S. No. 4440

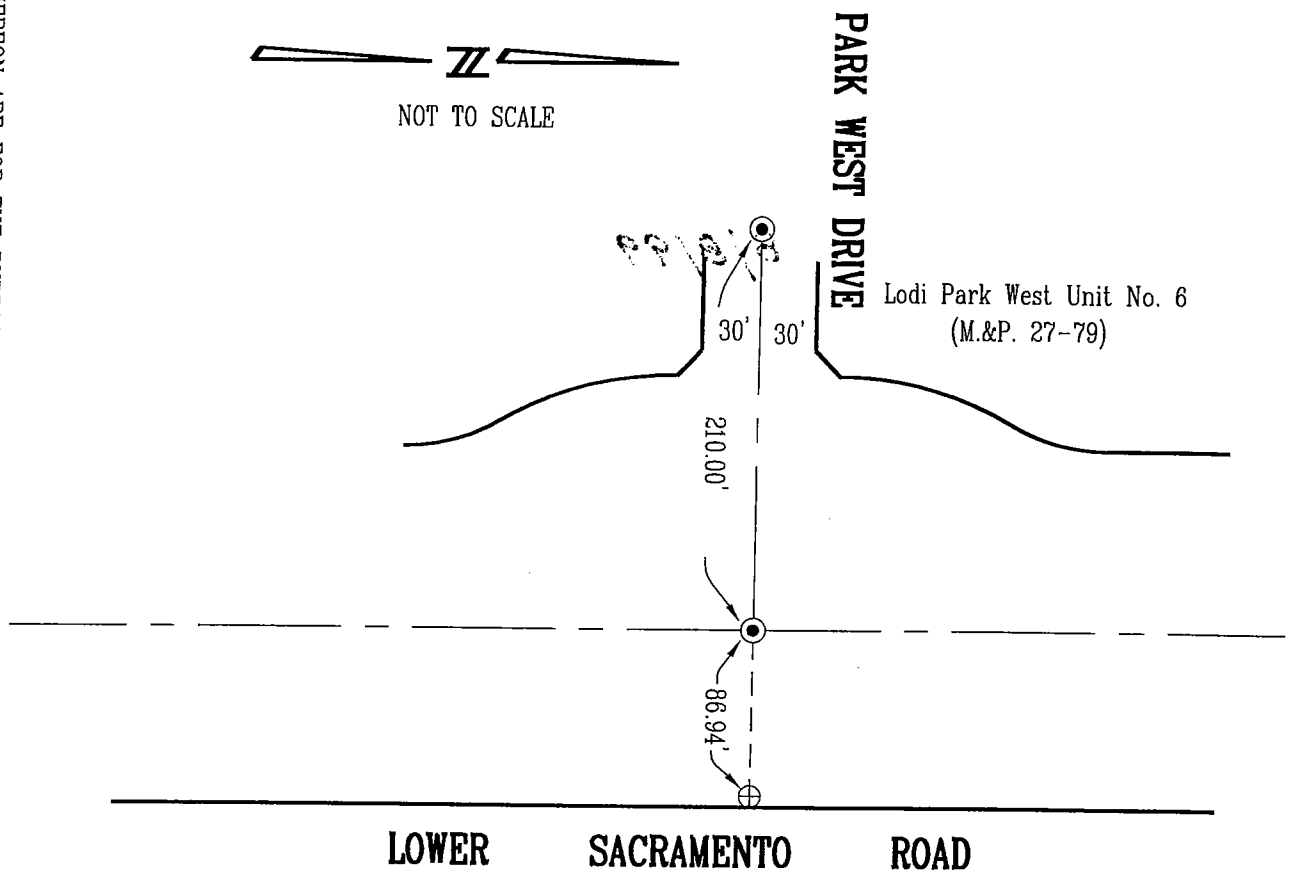
Title Assistant County Surveyor



County Surveyor's Comment This corner record is not in compliance with Board Rule 464(c) regarding submittal within 90 days from the date of survey.

(D.D. Sheet No. 15-A)

NOTE:
 THE TIES SHOWN HEREON ARE FOR THE PURPOSE OF PERPETUATING
 THE MONUMENTATION CURRENTLY EXISTING. NO ATTEMPT WAS MADE TO
 DETERMINE THE VALIDITY OF THE MONUMENTS OR THEIR PROPER
 LOCATION IN RELATION TO LEGAL BOUNDARY LINES IN THE AREA.



LEGEND

- ⊙ FD. 3/4" IRON ROD TAGGED
R.C.E. 12685 IN MONUMENT
BOX PER M&P 27-79
 - ⊕ SET CHISELLED CROSS IN CURB
FOUND
 - M. & P. BOOK OF MAPS AND PLATS
- ALL REFERENCES ARE TO SAN JOAQUIN COUNTY
 RECORDS AND BOOK OR VOLUME PRECEDES PAGE.