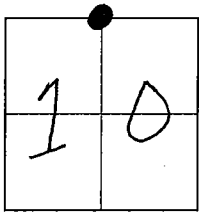


CORNER RECORD

Document Number 02-57  
County of San Joaquin, California

City of Lodi

Brief Legal Description Lower Sacramento Road at Lodi Avenue



T.3N., R.6E.

CORNER TYPE

- Government Corner  Control
- Meander  Property
- Rancho  Other

Date of Survey 8/0/99

COORDINATES (Optional)

N. \_\_\_\_\_  
 E. \_\_\_\_\_  
 Zone \_\_\_\_\_ NAD27  NAD83   
 NAD83 Epoch \_\_\_\_\_  
 Elev. \_\_\_\_\_  
 Vert. Datum: NGVD29  NAVD88   
 Meas. Units: Metric  Imperial

Corner - Left as found  Found and tagged  Established  Reestablished  Rebuilt

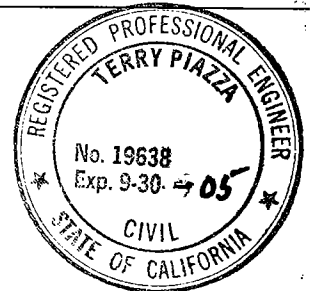
Identification and type of corner found: Evidence used to identify or procedure used to establish or reestablish the corner:  
Found railroad spike at the North quarter section corner of Section 10, Township 3 North, Range 6 East, Mount Diablo Base and Meridian.  
(M.F.P. 31-80)

A description of the physical condition of the monument as found and as set or reset: The monument is in good condition. Reference points were set in case monument is disturbed.

SURVEYOR'S STATEMENT

This Corner Record was prepared by me or under my direction in conformance with the Land Surveyors Act on November 15, 2002.

Signed Terry Piazza L.S. or R.C.E. Number 19638



COUNTY SURVEYOR'S STATEMENT

This Corner Record was received DECEMBER 27, 2002 and examined and filed JANUARY 3, 2003.

Signed Jeff D. Lund P.L.S. No. 4440

Title Assistant County Surveyor



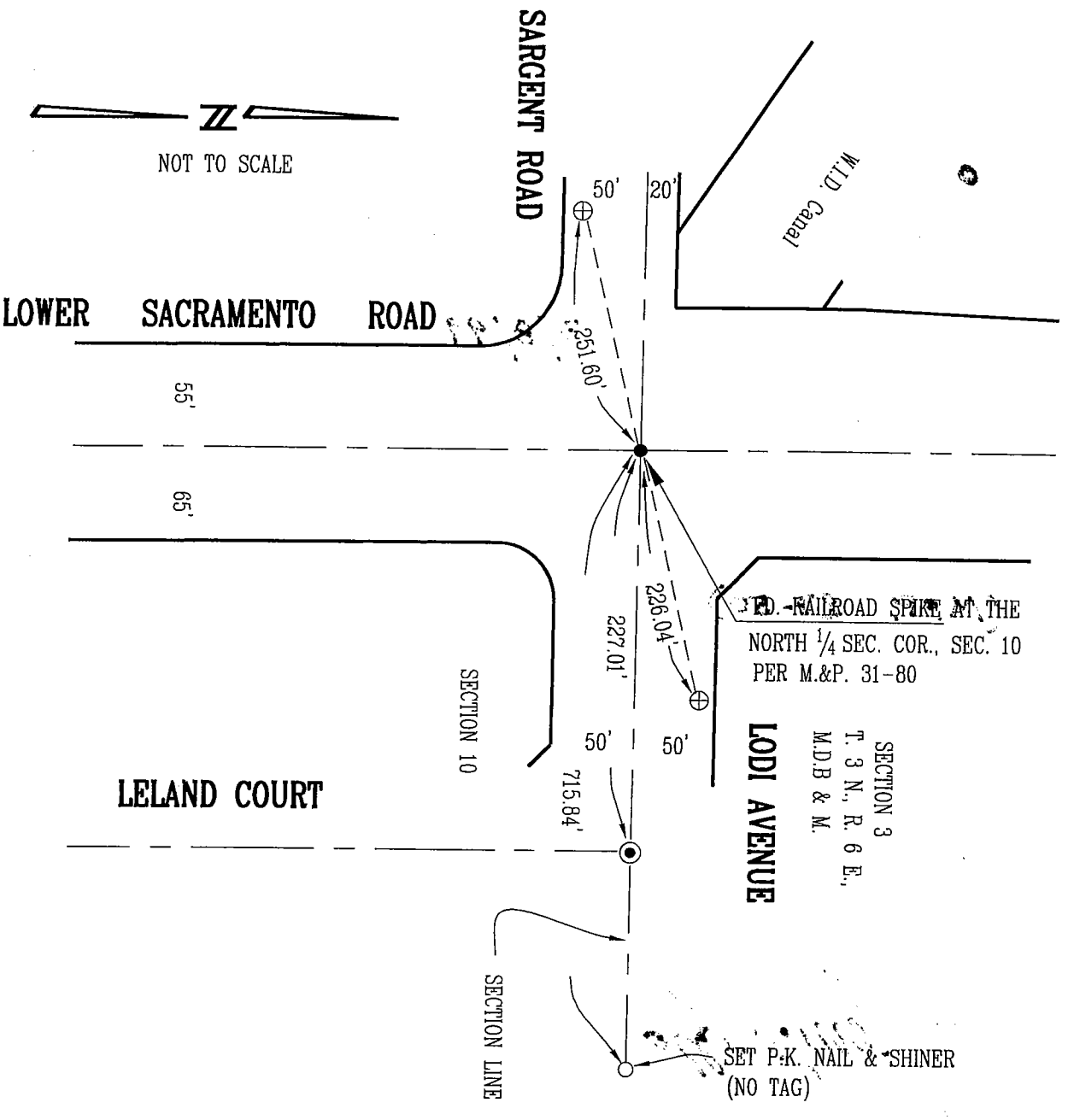
County Surveyor's Comment This corner record is not in compliance with Board Rule 464(c) regarding submittal within 90 days from the date of survey.

(D.D. Sheet No. 15-A)

# LEGEND

- ⊙ FD. 3/4" IRON ROD TAGGED  
R.C.E. 25835 IN MONUMENT  
BOX PER M&P 27-50
- SET MONUMENT, AS NOTED
- ⊕ SET CHISELLED CROSS IN CURB  
FOUND

M. & P. BOOK OF MAPS AND PLATS  
ALL REFERENCES ARE TO SAN JOAQUIN COUNTY  
RECORDS AND BOOK OR VOLUME PRECEDES PAGE.



NOT TO SCALE

## NOTE:

THE TIES SHOWN HEREON ARE FOR THE PURPOSE OF PERPETUATING THE MONUMENTATION CURRENTLY EXISTING. NO ATTEMPT WAS MADE TO DETERMINE THE VALIDITY OF THE MONUMENTS OR THEIR PROPER LOCATION IN RELATION TO LEGAL BOUNDARY LINES IN THE AREA.