

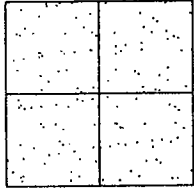
CORNER RECORD

Document Number CR-02-45

City of _____

County of San Joaquin, California

Brief Legal Description UNION ROAD AT THE INTERSECTION OF FIG AVENUE



CORNER TYPE

- Government Corner Control
- Meander Property
- Rancho Other

Date of Survey November 20, 2001

COORDINATES (Optional)

N. _____
 E. _____
 Zone _____ NAD27 NAD83
 NAD83 Epoch _____
 Elev. _____
 Vert. Datum: NGVD29 NAVD88
 Meas. Units: Metric Imperial

Corner - Left as found Found and tagged Established Reestablished Rebuilt

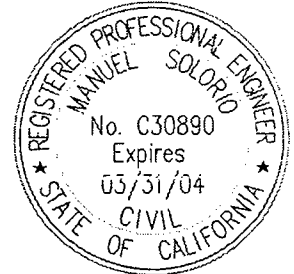
Identification and type of corner found: Evidence used to identify or procedure used to establish or reestablish the corner:
SEE SKETCH ON BACKSIDE.

A description of the physical condition of the monument as found and as set or reset:
FOUND MONUMENT IN GOOD CONDITION. SEE SKETCH ON BACKSIDE.

SURVEYOR'S STATEMENT

This Corner Record was prepared by me or under my direction in conformance with the Land Surveyors' Act on Oct. 1, 2002.

Signed Manuel Solorio R.C.E. Number C30890



COUNTY SURVEYOR'S STATEMENT

This Corner Record was received OCT. 2, 2002 and examined and filed OCTOBER 2, 2002.

Signed Jeff D. Lund P.L.S. No. 4440

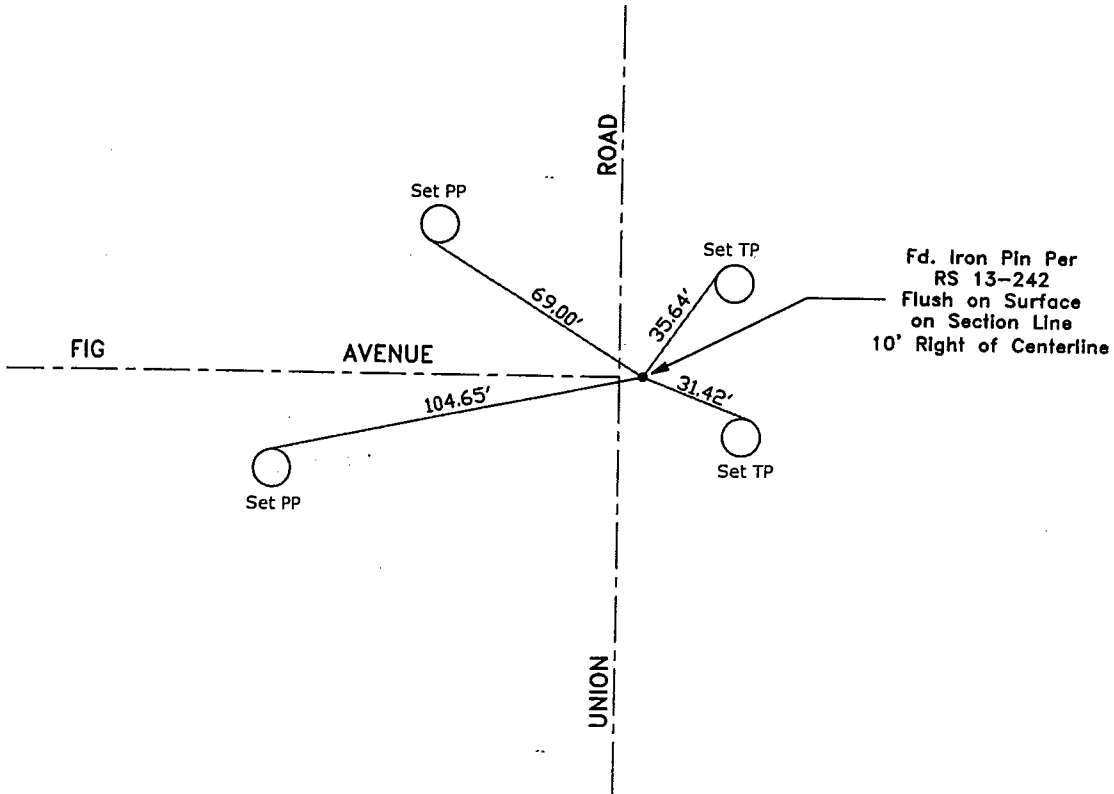
Title Assistant County Surveyor



County Surveyor's Comment _____
 THIS CORNER RECORD IS NOT IN COMPLIANCE WITH BOARD RULE 464(c)
 REGARDING SUBMITTAL WITHIN 90 DAYS FROM THE DATE OF SURVEY.



N.T.S.



"No Attempt Was Made to Verify the Monument(s)"

FP=Fence Post

GP=Guy Post

JP=Joint Pole

PP=Power Pole

SP=Service Pole

TP=Telephone Pole

N.T.S.=Not To Scale

Set=Conc. Nails with Brass Washers Stamped

"S.J. Co.", unless otherwise noted