

CORNER RECORD

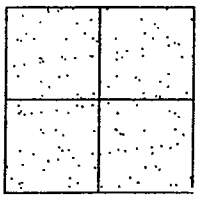
Document Number 02-38  
County of San Joaquin, California

City of \_\_\_\_\_

Brief Legal Description BOWMAN ROAD 4842' ± E/O LOCKHART ROAD

CORNER TYPE

COORDINATES (Optional)



Government Corner  Control   
Meander  Property   
Rancho  Other   
Date of Survey JANUARY 2, 2002

N. \_\_\_\_\_  
E. \_\_\_\_\_  
Zone \_\_\_\_\_ NAD27  NAD83   
NAD83 Epoch \_\_\_\_\_  
Elev. \_\_\_\_\_  
Vert. Datum: NGVD29  NAVD88   
Meas. Units: Meiric  Imperial

Corner - Left as found  Found and tagged  Established  Reestablished  Rebuilt

Identification and type of corner found: Evidence used to identify or procedure used to establish or reestablish the corner:  
SEE SKETCH ON BACKSIDE.

A description of the physical condition of the monument as found and as set or reset: \_\_\_\_\_  
FOUND MONUMENT IN GOOD CONDITION. SEE SKETCH ON BACKSIDE.

SURVEYOR'S STATEMENT

This Corner Record was prepared by me or under my direction in conformance with the Land Surveyors' Act on Aug. 22, 2002.  
Signed Manuel Solorio R.C.E. Number C30890

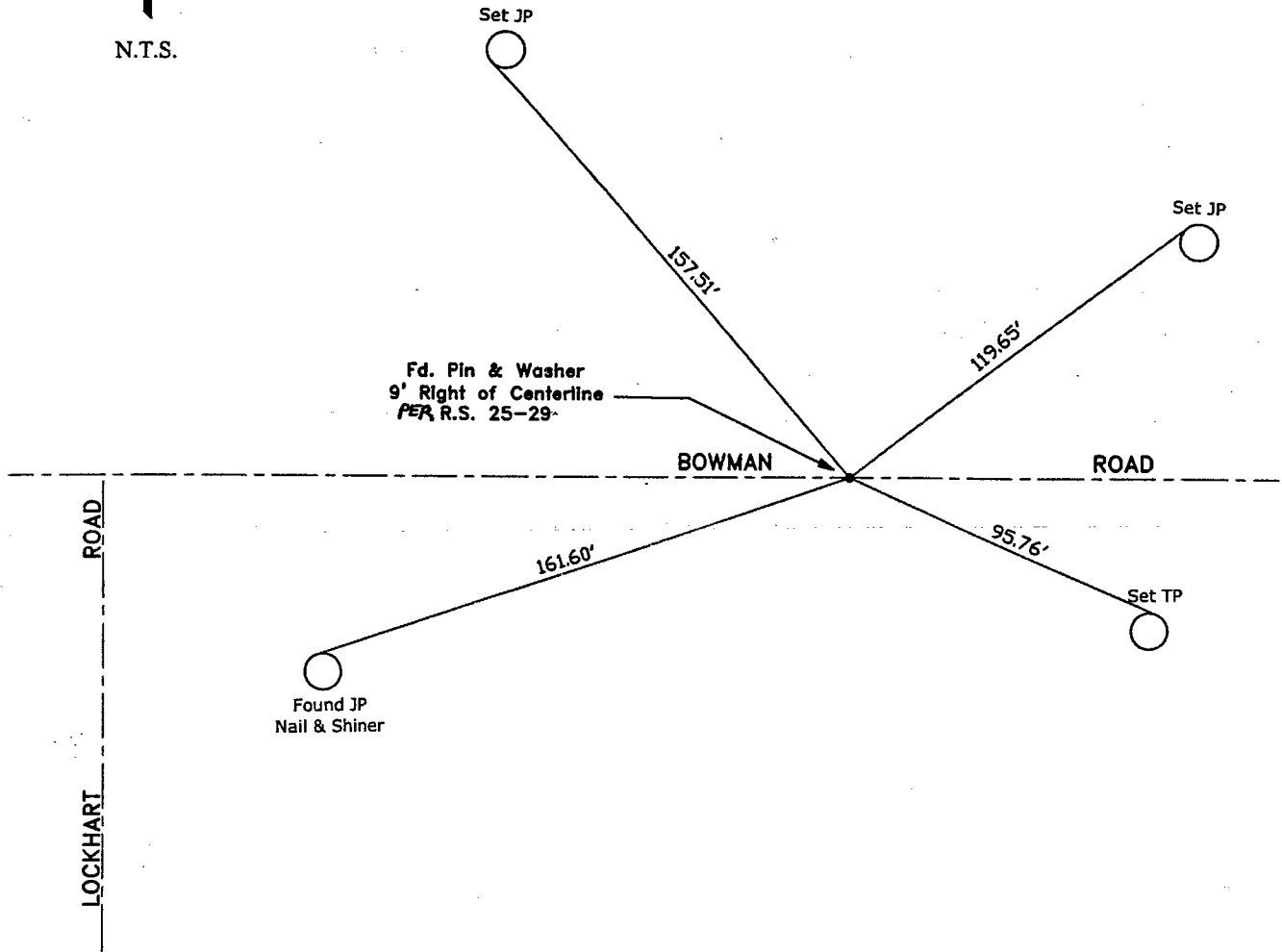


COUNTY SURVEYOR'S STATEMENT

This Corner Record was received Aug. 23, 2002 and examined and filed AUGUST 28, 2002.  
Signed Jeff D. Lund P.L.S. No. 4440  
Title Assistant County Surveyor



County Surveyor's Comment \_\_\_\_\_  
THIS CORNER RECORD IS NOT IN COMPLIANCE WITH BOARD RULE 464(c) REGARDING SUBMITTAL WITHIN 90 DAYS FROM THE DATE OF SURVEY.



"No Attempt Was Made to Verify the Monument(s)"

- FP=Fence Post
- GP=Guy Post
- JP=Joint Pole
- MH=Maintenance Hole
- PP=Power Pole
- SP=Service Pole
- TP=Telephone Pole
- N.T.S.=Not To Scale
- Set=Conc. Nails with Brass Washers Stamped  
"S.J. Co.", unless otherwise noted