

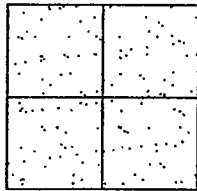
CORNER RECORD

Document Number 02-32

City of \_\_\_\_\_

County of San Joaquin, California

Brief Legal Description AIRPORT WAY 4749' ± N/O SAN JOAQUIN RIVER



CORNER TYPE

- Government Corner  Control
- Meander  Property
- Rancho  Other

Date of Survey March 16, 2001

COORDINATES (Optional)

N. \_\_\_\_\_  
 E. \_\_\_\_\_  
 Zone \_\_\_\_\_ NAD27  NAD83   
 NAD83 Epoch \_\_\_\_\_  
 Elev. \_\_\_\_\_  
 Vert. Datum: NGVD29  NAVD88   
 Meas. Units: Metric  Imperial

Corner - Left as found  Found and tagged  Established  Reestablished  Rebuilt

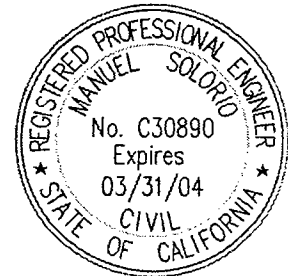
Identification and type of corner found: Evidence used to identify or procedure used to establish or reestablish the corner:  
SEE SKETCH ON BACKSIDE.

A description of the physical condition of the monument as found and as set or reset:  
FOUND MONUMENT IN GOOD CONDITION. SEE SKETCH ON BACKSIDE.

SURVEYOR'S STATEMENT

This Corner Record was prepared by me or under my direction in conformance with the Land Surveyors' Act on June 18, 2002.

Signed Manuel Solorio ~~LS~~ R.C.E. Number C30890



COUNTY SURVEYOR'S STATEMENT

This Corner Record was received JUNE 18, 2002 and examined and filed JUNE 19, 2002.

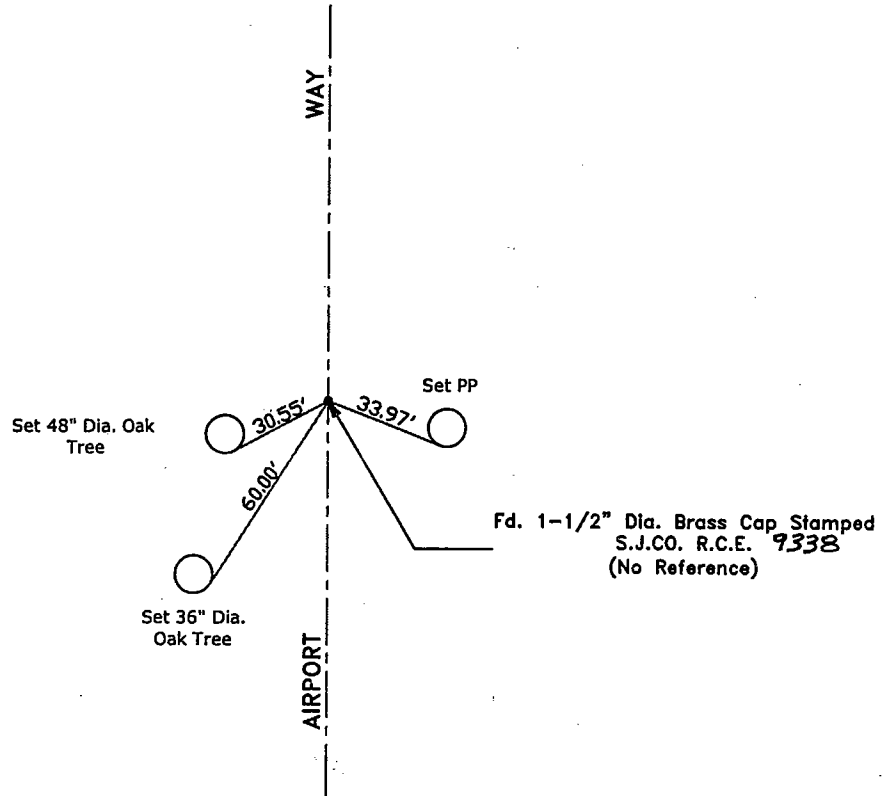
Signed Jeff Lund P.L.S. No. 4440  
Title Assistant County Surveyor



County Surveyor's Comment \_\_\_\_\_  
THIS CORNER RECORD IS NOT IN COMPLIANCE WITH BOARD RULE 464(c) REGARDING SUBMITTAL WITHIN 90 DAYS FROM THE DATE OF SURVEY.



N.T.S.



"No Attempt Was Made to Verify the Monument(s)"

- FP=Fence Post
- GP=Guy Post
- JP=Joint Pole
- MH=Maintenance Hole
- PP=Power Pole
- SP=Service Pole
- TP=Telephone Pole
- N.T.S.=Not To Scale
- Set=Conc. Nails with Brass Washers Stamped  
"S.J. Co.", unless otherwise noted