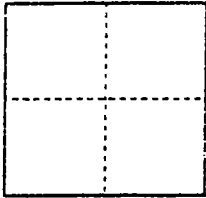


CORNER RECORD

City of N/A

Document Number 02-25  
County of San Joaquin, California

Brief Legal Description Record of Survey 23-83



CORNER TYPE

- Government Corner  Control
- Meander  Property
- Rancho  Other

Date of Survey July 6, 2001

COORDINATES (Optional)

N. \_\_\_\_\_  
 E. \_\_\_\_\_  
 Zone \_\_\_\_\_ NAD27  NAD83   
 NAD83 Epoch \_\_\_\_\_  
 Elev. \_\_\_\_\_  
 Vert. Datum: NGVD29  NAVD88   
 Meas. Units: Metric  Imperial

Corner - Left as found  Found and tagged  Established  Reestablished  Rebuilt

Identification and type of corner found: Evidence used to identify or procedure used to establish or reestablish the corner.

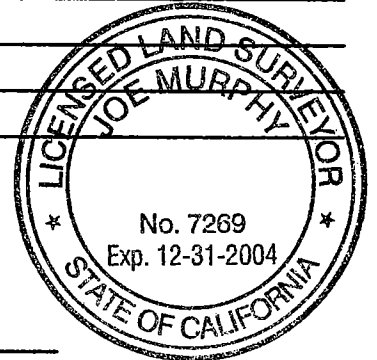
Reset corner as shown in the location indicated on corner record 02-15.

A description of the physical condition of the monument as found and as set or reset: Set 3/4" x 30"  
iron rod capped and stamped L.S. 7269.

SURVEYOR'S STATEMENT

This Corner Record was prepared by me or under my direction in conformance with the Land Surveyors' Act on April 5, 2002.

Signed Joe Murphy L.S. ~~7269~~ Number 7269



COUNTY SURVEYOR'S STATEMENT

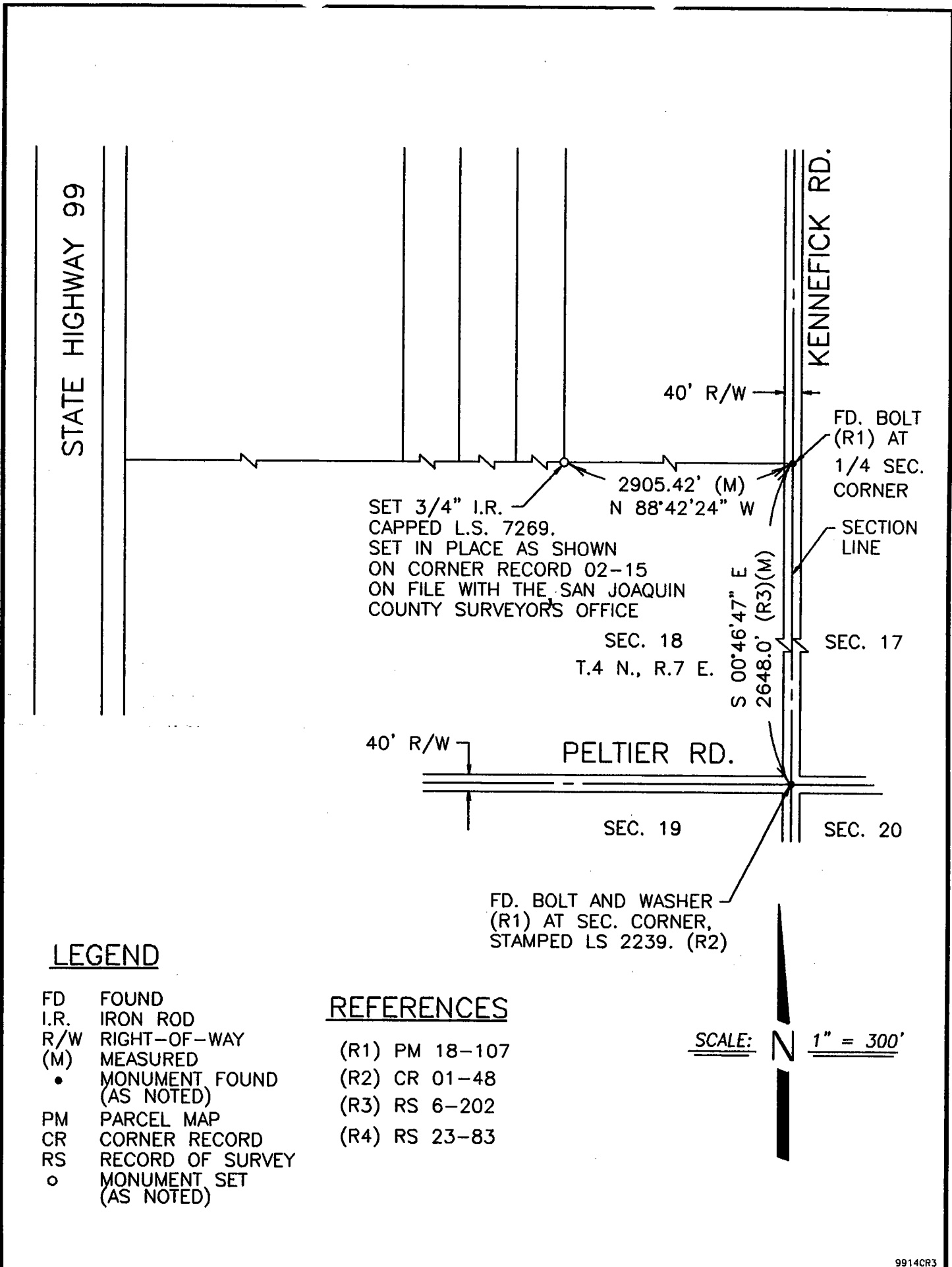
This Corner Record was received APRIL 10, 2002 and examined and filed APRIL 17, 2002.

Signed Jeff Lund P.L.S. No. 4440

Title Assistant County Surveyor



County Surveyor's Comment \_\_\_\_\_



SET 3/4" I.R.  
 CAPPED L.S. 7269.  
 SET IN PLACE AS SHOWN  
 ON CORNER RECORD 02-15  
 ON FILE WITH THE SAN JOAQUIN  
 COUNTY SURVEYOR'S OFFICE

SEC. 18  
 T.4 N., R.7 E.

FD. BOLT  
 (R1) AT  
 1/4 SEC.  
 CORNER

SECTION  
 LINE

SEC. 17

S 00°46'47" E  
 2648.0' (R3)(M)

PELTIER RD.

SEC. 19

SEC. 20

FD. BOLT AND WASHER  
 (R1) AT SEC. CORNER,  
 STAMPED LS 2239. (R2)

**LEGEND**

- FD FOUND
- I.R. IRON ROD
- R/W RIGHT-OF-WAY
- (M) MEASURED
- MONUMENT FOUND (AS NOTED)
- PM PARCEL MAP
- CR CORNER RECORD
- RS RECORD OF SURVEY
- MONUMENT SET (AS NOTED)

**REFERENCES**

- (R1) PM 18-107
- (R2) CR 01-48
- (R3) RS 6-202
- (R4) RS 23-83

SCALE: N 1" = 300'

