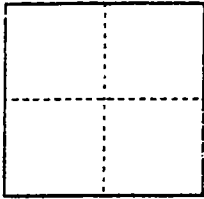


CORNER RECORD

City of N/A

Document Number 02-24
County of San Joaquin, California

Brief Legal Description Record of Survey 23-83



CORNER TYPE

- Government Corner Control
- Meander Property
- Rancho Other

Date of Survey July 6, 2001

COORDINATES (Optional)

N. _____
 E. _____
 Zone _____ NAD27 NAD83
 NAD83 Epoch _____
 Elev. _____
 Vert. Datum: NGVD29 NAVD88
 Meas. Units: Metric Imperial

Corner - Left as found Found and tagged Established Reestablished Rebuilt

Identification and type of corner found: Evidence used to identify or procedure used to establish or reestablish the corner:

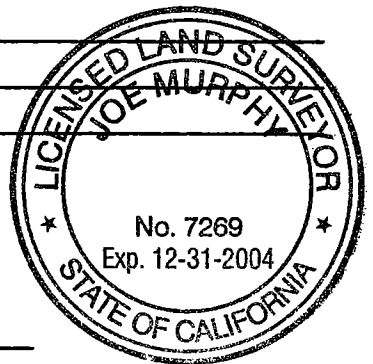
Reset corner as shown in the location indicated on corner record 02-14.

A description of the physical condition of the monument as found and as set or reset: Set 3/4" x 30"
iron rod capped and stamped L.S. 7269.

SURVEYOR'S STATEMENT

This Corner Record was prepared by me or under my direction in conformance with the Land Surveyors' Act on April 5, 2002.

Signed [Signature] L.S. ~~7269~~ Number 7269



COUNTY SURVEYOR'S STATEMENT

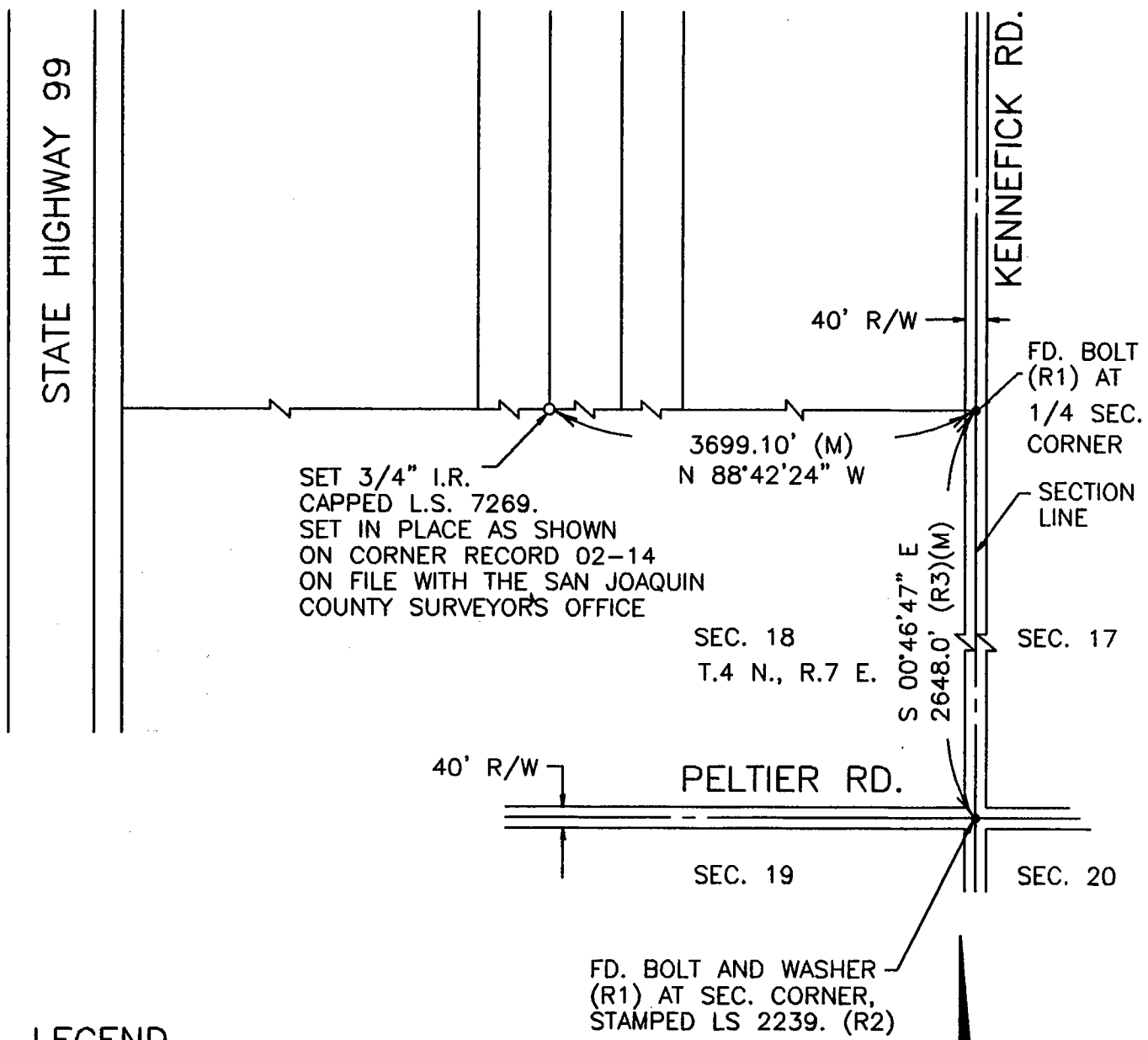
This Corner Record was received APRIL 10, 2002 and examined and filed APRIL 17, 2002.

Signed [Signature] P.L.S. No. 4440

Title Assistant County Surveyor



County Surveyor's Comment _____



LEGEND

- FD FOUND
- I.R. IRON ROD
- R/W RIGHT-OF-WAY
- (M) MEASURED
- MONUMENT FOUND (AS NOTED)
- PM PARCEL MAP
- CR CORNER RECORD
- RS RECORD OF SURVEY
- MONUMENT SET (AS NOTED)

REFERENCES

- (R1) PM 18-107
- (R2) CR 01-48
- (R3) RS 6-202
- (R4) RS 23-83

