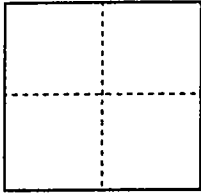


**CORNER RECORD**

City of N/A

Document Number 02-15  
County of San Joaquin, California

Brief Legal Description Record of Survey 23-83



**CORNER TYPE**

Government Corner  Control   
Meander  Property   
Rancho  Other

Date of Survey 4/4/99

**COORDINATES (Optional)**

N. \_\_\_\_\_  
E. \_\_\_\_\_  
Zone \_\_\_\_\_ NAD27  NAD83   
NAD83 Epoch \_\_\_\_\_  
Elev. \_\_\_\_\_  
Vert. Datum: NGVD29  NAVD88   
Meas. Units: Metric  Imperial

Corner - Left as found  Found and tagged  Established  Reestablished  Rebuilt

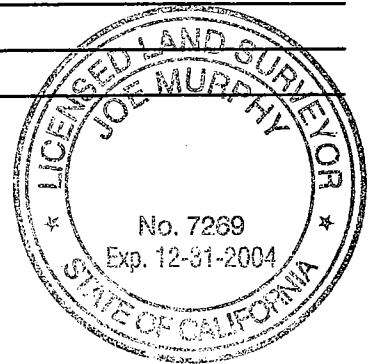
Identification and type of corner found: Evidence used to identify or procedure used to establish or reestablish the corner:  
Found 3/4" iron rod, no tag. I did not file this corner record in conformance with Board Rule 464(c) regarding time of when the monument was found as I had no anticipation of it being destroyed.

A description of the physical condition of the monument as found and as set or reset: \_\_\_\_\_  
\_\_\_\_\_  
\_\_\_\_\_

**SURVEYOR'S STATEMENT**

This Corner Record was prepared by me or under my direction in conformance with the Land Surveyors' Act on March 1, 2002.

Signed Joe Murphy L.S. ~~XXXXX~~ Number 7269



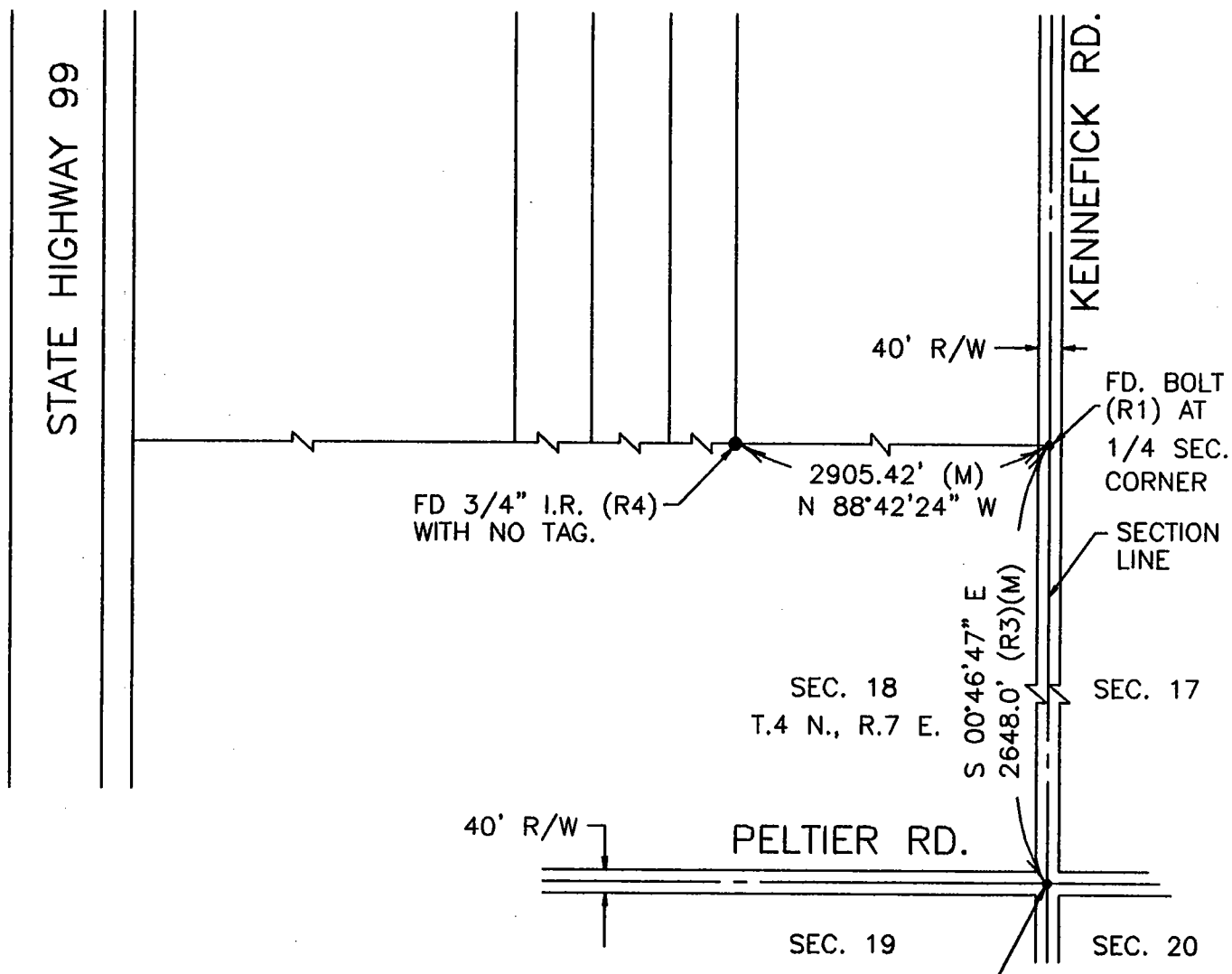
**COUNTY SURVEYOR'S STATEMENT**

This Corner Record was received MARCH 1, 2002 and examined and filed MARCH 5, 2002.

Signed Jay Bond L.S. No. 4440  
Title ASSISTANT County Surveyor

County Surveyors Comment \_\_\_\_\_  
\_\_\_\_\_  
\_\_\_\_\_

(D.D. Sheet No. 11 )



**LEGEND**

- FD FOUND
- I.R. IRON ROD
- R/W RIGHT-OF-WAY
- (M) MEASURED
- MONUMENT FOUND (AS NOTED)
- PM PARCEL MAP
- CR CORNER RECORD
- RS RECORD OF SURVEY

**REFERENCES**

- (R1) PM 18-107
- (R2) CR 01-48
- (R3) RS 6-202
- (R4) RS 23-83

