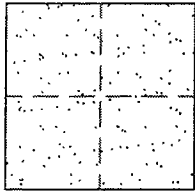


CORNER RECORD

Document Number 02-10
County of San Joaquin, California

City of _____

Brief Legal Description EIGHT MILE ROAD 3950' ± W/O JACK TONE RD.



CORNER TYPE

- Government Corner Control
- Meander Property
- Rancho Other

Date of Survey OCTOBER 3, 2001

COORDINATES (Optional)

N. _____
 E. _____
 Zone _____ NAD27 NAD83
 NAD83 Epoch _____
 Elev. _____
 Vert. Datum: NGVD29 NAVD88
 Meas. Units: Metric Imperial

Corner - Left as found Found and tagged Established Reestablished Rebuilt

Identification and type of corner found: Evidence used to identify or procedure used to establish or reestablish the corner:
SET PK NAIL AND WASHER STAMPED "S.J. CO.". CONFIRMED LOCATION PER SWING TIES ON CR-01-123. SEE SKETCH ON BACKSIDE.

A description of the physical condition of the monument as found and as set or reset: _____
SET MONUMENT. SEE SKETCH ON BACKSIDE.

SURVEYOR'S STATEMENT

This Corner Record was prepared by me or under my direction in conformance with the Land Surveyors' Act on February 15, 2002.

Signed Manuel Solano L.S. or R.C.E. Number C30890



COUNTY SURVEYOR'S STATEMENT

This Corner Record was received February 20th, 2002 and examined and filed February 21, 2002.

Signed Jeff Lund L.S. R.C.E. No. 4440

For: Title _____ County Surveyor

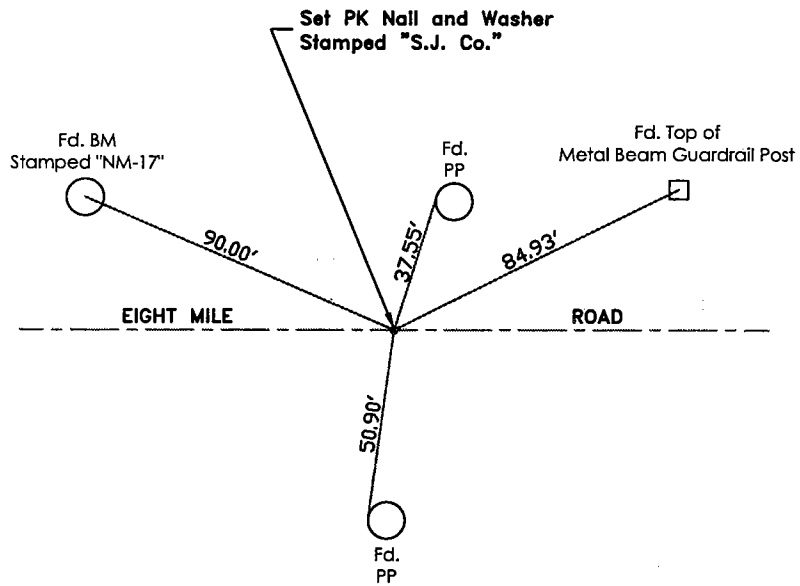


County Surveyor's Comment _____

THIS CORNER RECORD IS NOT IN COMPLIANCE WITH BOARD RULE 464(c) REGARDING SUBMITTAL WITHIN 90 DAYS FROM THE DATE OF SURVEY.



N.T.S.



"No Attempt Was Made To Verify Monument(s)"

FP=Fence Post

GP=Guy Post

JP=Joint Pole

PP=Power Pole

SP=Service Pole

TP=Telephone Pole

N.T.S.=Not To Scale

Fd.=Conc. Nails with Brass Washers Stamped
"S.J. Co.", unless otherwise noted