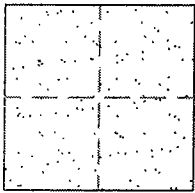


CORNER RECORD

Document number 02-5  
County of San Joaquin, California

City of \_\_\_\_\_

Brief Legal Description N. 99 FRONTAGE ROAD (EAST OF HWY. 99) 1000' ± N/O CORA POST RD.



CORNER TYPE

- Government Corner  Control
- Meander  Property
- Rancho  Other

Date of Survey OCTOBER 15, 2001

COORDINATES (Optional)

N. \_\_\_\_\_  
 E. \_\_\_\_\_  
 Zone \_\_\_\_\_ NAD27  NAD83   
 NAD83 Epoch \_\_\_\_\_  
 Elev. \_\_\_\_\_  
 Vert. Datum: NGVD29  NAVD88   
 Meas. Units: Metric  Imperial

Corner - Left as found  Found and tagged  Established  Reestablished  Rebuilt

Identification and type of corner found: Evidence used to identify or procedure used to establish or reestablish the corner:  
SET PK NAIL AND WASHER STAMPED "S.J. CO.". CONFIRMED LOCATION PER SWING TIES ON CR-01-125. SEE SKETCH ON BACKSIDE.

A description of the physical condition of the monument as found and as set or reset: \_\_\_\_\_  
SET MONUMENT. SEE SKETCH ON BACKSIDE.

SURVEYOR'S STATEMENT

This Corner Record was prepared by me or under my direction in conformance with the Land Surveyors' Act on February 15, 2002.

Signed Manuel Solis L.S. or R.C.E. Number C30890



COUNTY SURVEYOR'S STATEMENT

This Corner Record was received February 20<sup>th</sup>, 2002 and examined and filed February 21, 2002.

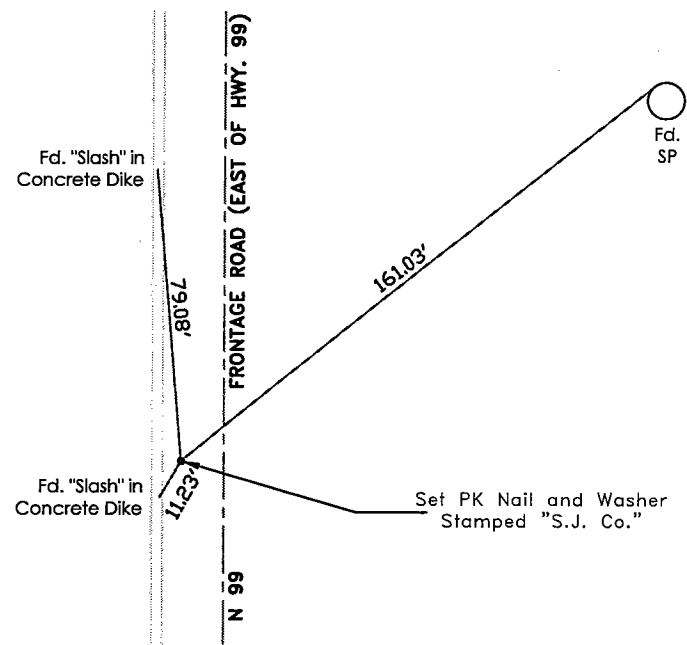
Signed \_\_\_\_\_ L.S. R.C.E. No. 4440  
For: Title County Surveyor



County Surveyor's Comment \_\_\_\_\_  
THIS CORNER RECORD IS NOT IN COMPLIANCE WITH BOARD RULE 464(c) REGARDING SUBMITTAL WITHIN 90 DAYS FROM THE DATE OF SURVEY.



N.T.S.



"No Attempt Was Made To Verify Monument(s)"

- FP=Fence Post
- GP=Guy Post
- JP=Joint Pole
- PP=Power Pole
- SP=Service Pole
- TP=Telephone Pole
- N.T.S.=Not To Scale
- Fd.=Conc. Nails with Brass Washers Stamped "S.J. Co.", unless otherwise noted