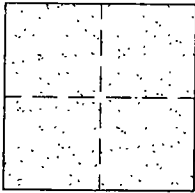


CORNER RECORD

Document Number 01-199  
County of San Joaquin, California

City of \_\_\_\_\_

Brief Legal Description COPPEROPOLIS ROAD AT THE INTERSECTION OF REID AVE.



CORNER TYPE

- Government Corner  Control
- Meander  Property
- Rancho  Other

Date of Survey OCTOBER 16, 2001

COORDINATES (Optional)

N. \_\_\_\_\_  
 E. \_\_\_\_\_  
 Zone \_\_\_\_\_ NAD27  NAD83   
 NAD83 Epoch \_\_\_\_\_  
 Elev. \_\_\_\_\_  
 Vert. Datum: NGVD29  NAVD88   
 Meas. Units: Metric  Imperial

Corner - Left as found  Found and tagged  Established  Reestablished  Rebuilt

Identification and type of corner found: Evidence used to identify or procedure used to establish or reestablish the corner:  
SET PK NAIL AND WASHER STAMPED "S.J. CO.". REESTABLISHED LOCATION PER SWING TIES ON CR-00-296. SEE SKETCH ON BACKSIDE.

A description of the physical condition of the monument as found and as set or reset:  
SET MONUMENT. SEE SKETCH ON BACKSIDE.

SURVEYOR'S STATEMENT

This Corner Record was prepared by me or under my direction in conformance with the Land Surveyors' Act on DECEMBER 14, 2001.

Signed Manuel Solorio L.S. or R.C.E. Number C30890



COUNTY SURVEYOR'S STATEMENT

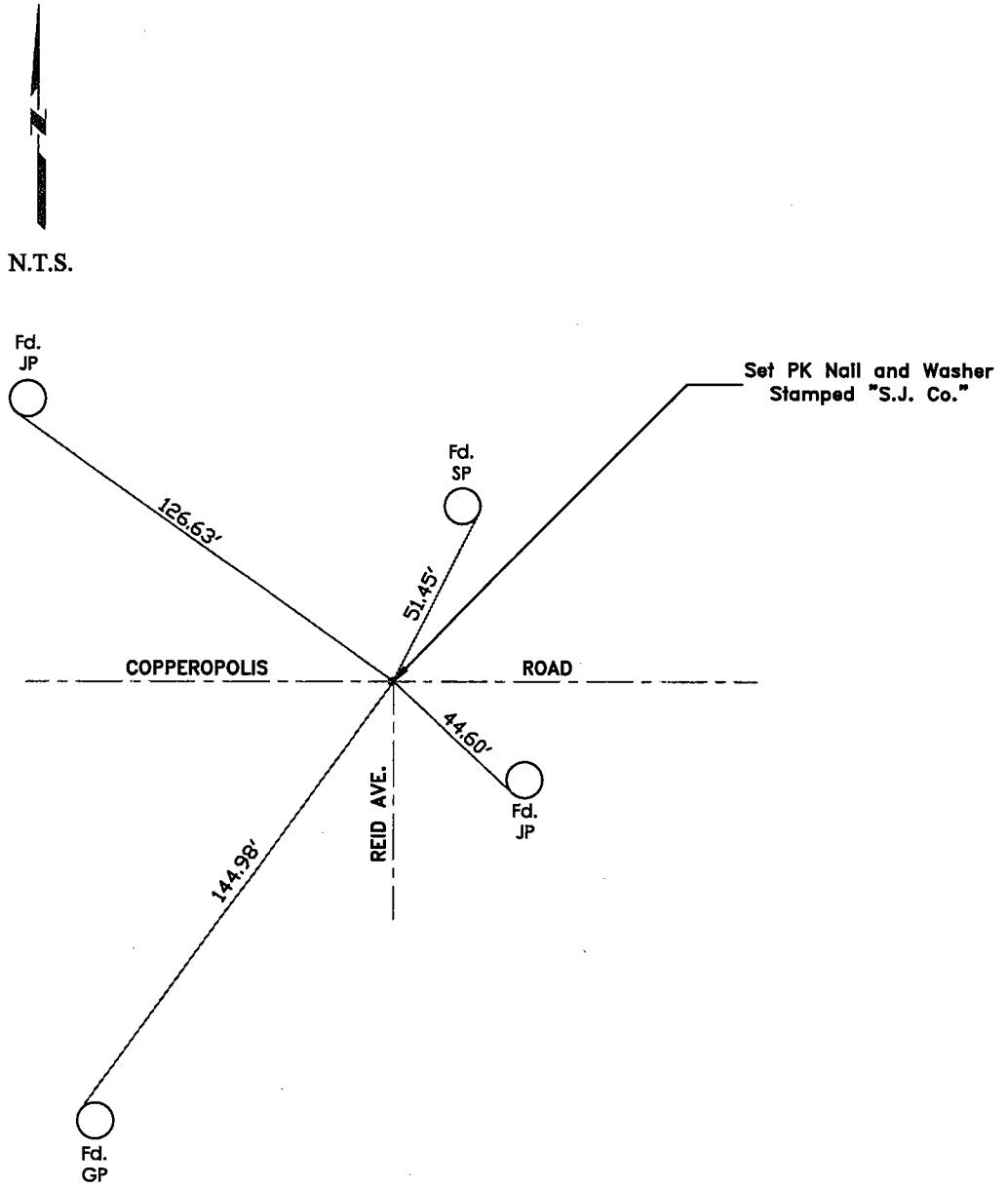
This Corner Record was received December 21, 2001 and examined and filed DECEMBER, 2001.

Signed Jeff Lund L.S. R.C.E. No. 4440

Title Interim County Surveyor



County Surveyor's Comment \_\_\_\_\_



"No Attempt Was Made To Verify Monument(s)"

- FP=Fence Post
- GP=Guy Post
- JP=Joint Pole
- PP=Power Pole
- SP=Service Pole
- TP=Telephone Pole
- N.T.S.=Not To Scale
- Fd.=Conc. Nails with Brass Washers Stamped "S.J. Co.", unless otherwise noted