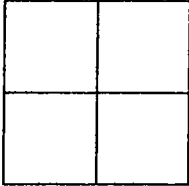


CORNER RECORD

Document Number 01-196

City of STOCKTON County of SAN JOAQUIN, California

Brief Legal Description FRESNO AVENUE AT WASHINGTON STREET  
BOOK 32 OF SURVEYS, PAGE 49, SAN JOAQUIN COUNTY RECORDS



Government Corner  Control   
Meander  Property   
Rancho  Other   
Date of Survey 10-10-01

**COORDINATES (Optional)**  
N. 2168120.837  
E. 6327241.409  
Zone 3 NAD27  NAD83   
NAD83 Epoch 1991.35  
Elev. 5.385  
Vert. Datum: NGVD29  NAVD88   
Meas. Units: Metric  Imperial

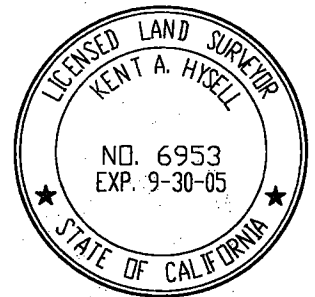
Corner - Left as found  Found and tagged  Established  Reestablished  Rebuilt

Identification and type of corner found: Evidence used to identify or procedure used to establish or reestablished the corner:  
BRASS DISK STAMPED "7S-5" IN MONUMENT BOX MARKING THE CITY OF STOCKTON CONTROL MONUMENT  
AT THE INTERSECTION OF FRESNO AVE. AND WASHINGTON ST. AS SHOWN FOR RECORD IN BOOK 29 OF  
SURVEYS AT PAGE 61, SAN JOAQUIN COUNTY RECORDS WAS DESTROYED DUE TO PAVEMENT RECONSTRUCTION.  
MONUMENT WAS RE-ESTABLISHED USING THE SWING TIES SET PRIOR TO THE MONUMENT BEING DESTROYED  
AS SHOWN ON PREVIOUS CORNER RECORD. 01-116.

A description of the physical condition of the monument as found and as set or reset:  
SET 2 1/2" BRASS DISK STAMPED "7S-5 RESET", "10-2001", "LS6953" AND "CITY OF STOCKTON  
SURVEY MONUMENT" IN MONUMENT WELL.

This Corner Record was prepared by me or under my direction in conformance with the Land Surveyors' Act on OCTOBER 17, 2001.

Signed [Signature] L.S. 6953

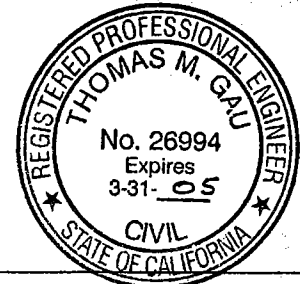


COUNTY SURVEYOR'S STATEMENT

This Corner Record was received OCTOBER 30, 2001 and examined and filed NOVEMBER 19, 2001.

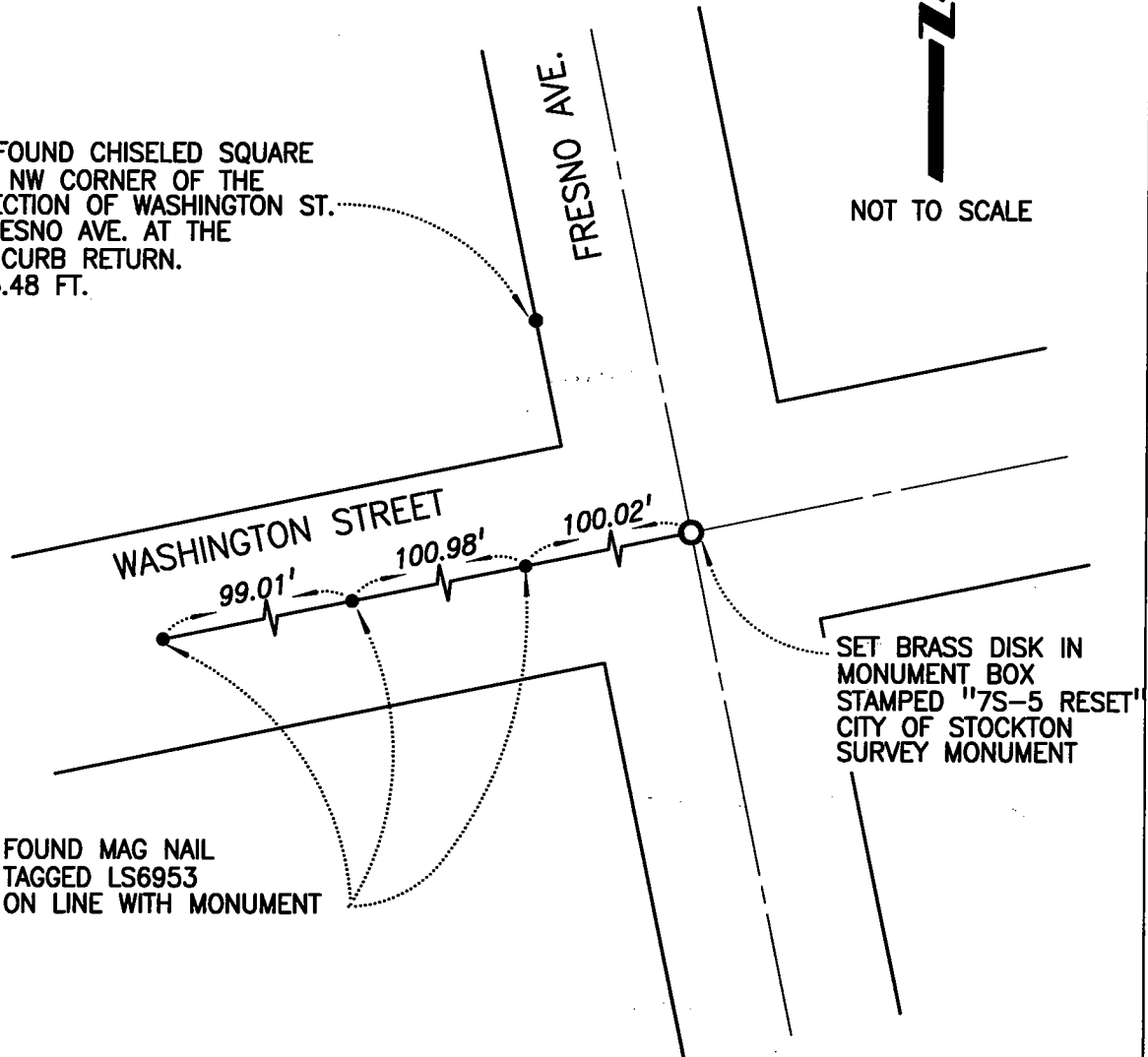
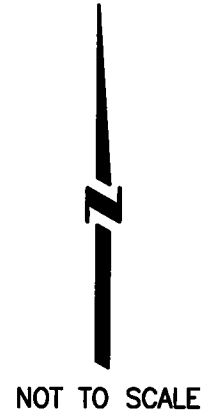
Signed [Signature] R.C.E. No. 26994

Title INTERIM County Surveyor



County Surveyor's Comment \_\_\_\_\_

TBM: FOUND CHISELED SQUARE  
AT THE NW CORNER OF THE  
INTERSECTION OF WASHINGTON ST.  
AND FRESNO AVE. AT THE  
NORTH CURB RETURN.  
ELEV. 5.48 FT.



FOUND MAG NAIL  
TAGGED LS6953  
ON LINE WITH MONUMENT

SET BRASS DISK IN  
MONUMENT BOX  
STAMPED "7S-5 RESET"  
CITY OF STOCKTON  
SURVEY MONUMENT

NOTE: SET MONUMENT IS NOT  
VERIFIED AS BEING THE CENTERLINE  
OF THE STREET RIGHTS-OF-WAY.