

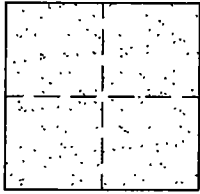
# CORNER RECORD

Document Number CR-01-194

City of \_\_\_\_\_

County of San Joaquin, California

Brief Legal Description PEACH AVENUE AT THE INTERSECTION OF OLEANDER AVE.



### CORNER TYPE

Government Corner  Control   
Meander  Property   
Rancho  Other

Date of Survey SEPTEMBER 27, 2001

### COORDINATES (Optional)

N. \_\_\_\_\_  
E. \_\_\_\_\_  
Zone \_\_\_\_\_ NAD27  NAD83   
NAD83 Epoch \_\_\_\_\_  
Elev. \_\_\_\_\_  
Vert. Datum: NGVD29  NAVD88   
Meas. Units: Metric  Imperial

Corner - Left as found  Found and tagged  Established  Reestablished  Rebuilt

Identification and type of corner found: Evidence used to identify or procedure used to establish or reestablish the corner:  
FOUND 1" PIPE. CONFIRMED LOCATION PER SWING TIES ON CR-01-40. SEE SKETCH ON BACKSIDE.

A description of the physical condition of the monument as found and as set or reset:  
FOUND MONUMENT IN GOOD CONDITION. SEE SKETCH ON BACKSIDE.

### SURVEYOR'S STATEMENT

This Corner Record was prepared by me or under my direction in conformance with the Land Surveyors' Act on NOVEMBER 1, 2001.

Signed Manuel Solord L.S. or R.C.E. Number C30890

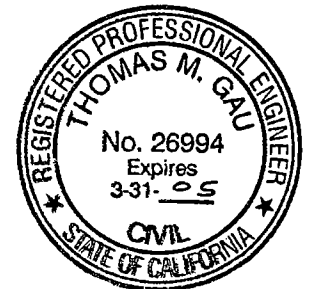


### COUNTY SURVEYOR'S STATEMENT

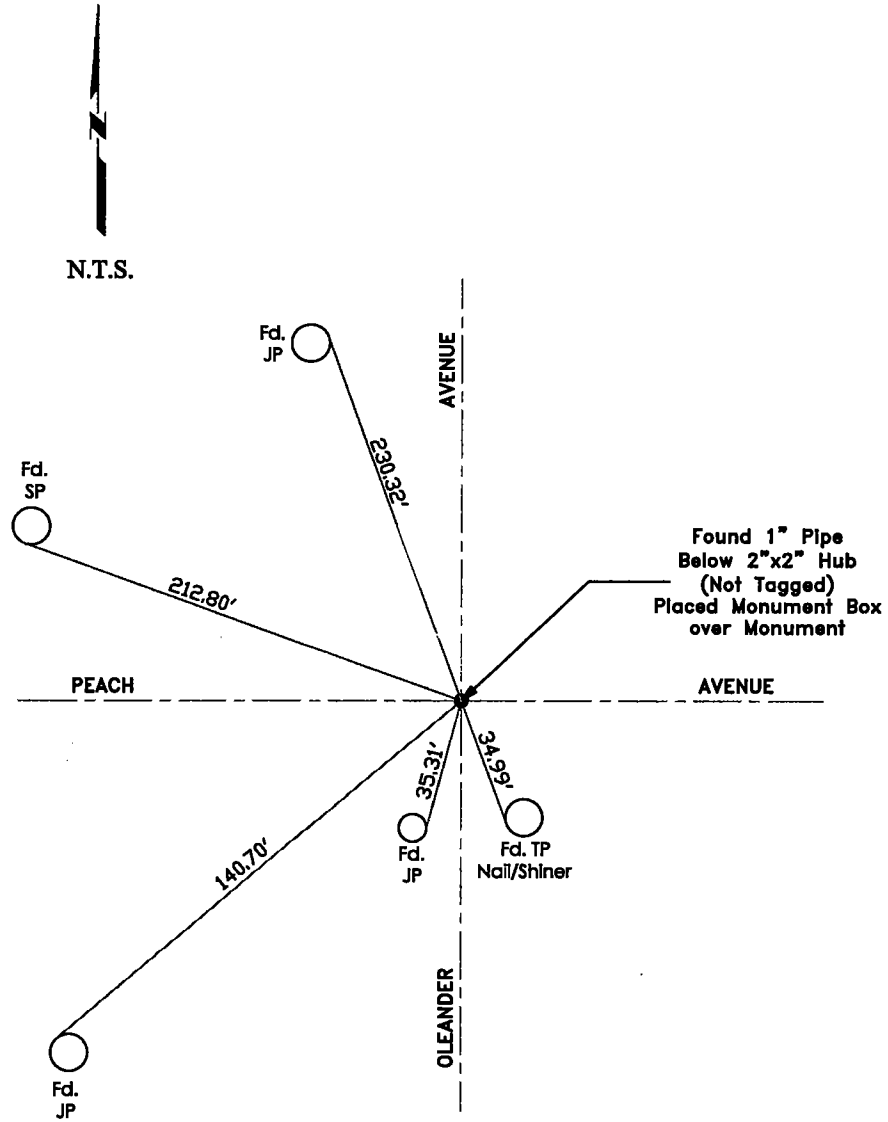
This Corner Record was received November 2, 2001 and examined and filed November 6, 2001.

Signed Thomas M. Gau R.C.E. No. 26994

for Title Interim County Surveyor



County Surveyor's Comment \_\_\_\_\_



"No Attempt Was Made To Verify Monument(s)"

- FP=Fence Post
- GP=Guy Post
- JP=Joint Pole
- PP=Power Pole
- SP=Service Pole
- TP=Telephone Pole
- N.T.S.=Not To Scale
- Fd.=Conc. Nails with Brass Washers Stamped  
"S.J. Co.", unless otherwise noted