

CORNER RECORD

Document Number CR-01-189

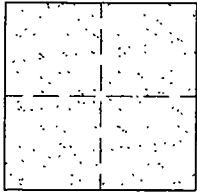
City of _____

County of San Joaquin, California

Brief Legal Description TRACY BOULEVARD 1588' ± E/O LAMMERS RD.

CORNER TYPE

COORDINATES (Optional)



Government Corner Control
Meander Property
Rancho Other

Date of Survey OCTOBER 9, 2001

N. _____
E. _____
Zone _____ NAD27 NAD83
NAD83 Epoch _____
Elev. _____
Vert. Datum: NGVD29 NAVD88
Meas. Units: Metric Imperial

Corner - Left as found Found and tagged Established Reestablished Rebuilt

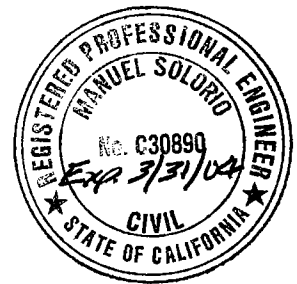
Identification and type of corner found: Evidence used to identify or procedure used to establish or reestablish the corner:
FOUND PIN/WASHER. CONFIRMED LOCATION PER SWING TIES ON CR-01-66. SEE SKETCH ON BACKSIDE.

A description of the physical condition of the monument as found and as set or reset:
FOUND MONUMENT IN GOOD CONDITION. SEE SKETCH ON BACKSIDE.

SURVEYOR'S STATEMENT

This Corner Record was prepared by me or under my direction in conformance with the Land Surveyors' Act on OCTOBER 29, 2001.

Signed Manuel Solario L.S. or R.C.E. Number C30890



COUNTY SURVEYOR'S STATEMENT

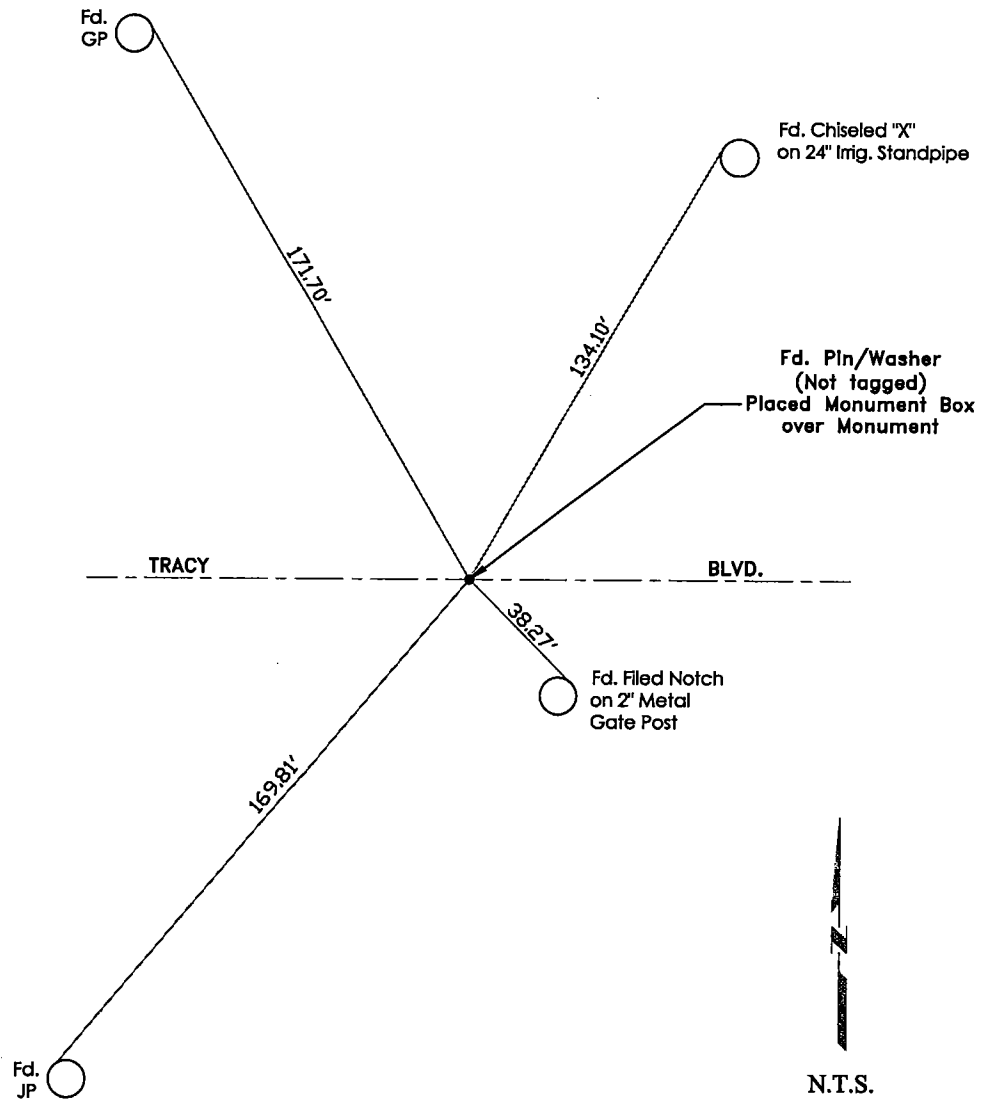
This Corner Record was received October 30, 2001 and examined and filed November 7, 2001.

Signed Thomas M. Gau R.C.E. No. 26994

For Title Interim County Surveyor



County Surveyor's Comment _____



"No Attempt Was Made To Verify Monument(s)"

FP=Fence Post
 GP=Guy Post
 JP=Joint Pole
 PP=Power Pole
 SP=Service Pole
 TP=Telephone Pole
 N.T.S.=Not To Scale
 Fd.=Conc. Nails with Brass Washers Stamped
 "S.J. Co.", unless otherwise noted